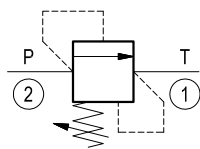
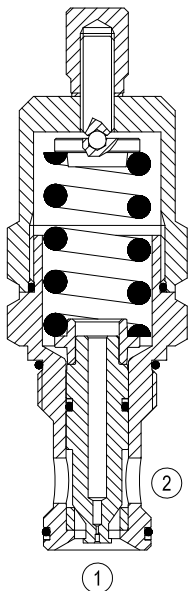


Relief, direct acting poppet type differential area

Special cavity, 004

VSD-350

04.15.04 - X - 99 - Z



Description

Flow is blocked from 2 to 1 until pressure increases to meet the selected valve setting, lifting the poppet from its seat and allowing relief flow through 1 to tank. Pressure at 1 is additive to the relief setting of the valve. The combination of stable poppet design and hardened seat provide excellent response, hysteresis and leakage characteristics.

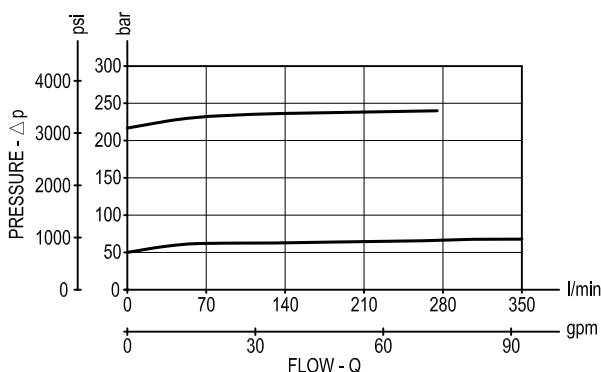
Technical data

Max. operating pressure port 2 (P)	bar (psi)	210 (3000)
Max. pressure admitted port 1 (T)	bar (psi)	140 (2000)
Max. flow	l/min. (gpm)	350 (93)
Max. internal leakage (*)	drops/min.	15
Fluid temperature range	°C (°F)	-30 to 100 (-22 to 212)
Installation torque	Nm (ft-lbs)	245-264 (181-196)
Weight	kg (lbs)	1.5 (3.3)
Special cavity		004, see data sheet RE 18325-75
Seal kit (**)	code material no.	RG0004020520100 R930001696
Fluids		Mineral-based or synthetics with lubricating properties at viscosities of 10 to 500 mm ² /s (cSt)
Filtration		Nominal value max. 10µm (NAS 8) ISO 4406 19/17/14
Installation		No restrictions
Other Technical Data		See data sheet RE 18350-50

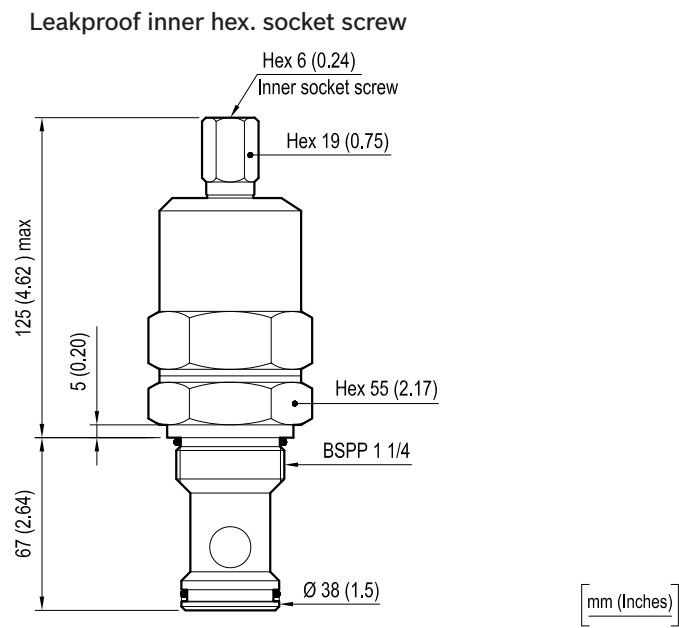
(*) at 80% of pressure setting

(**) Only external seals for 10 valves

Performance



Dimensions



Ordering code

04.15.04	X	99	Z	00	*
----------	---	----	---	----	---

Series 0/A to L
unchanged performances and dimensions

Relief, direct acting poppet
type differential area

Version and options standard

Adjustments
= 03 Leakproof inner hex. socket screw

Special cavity, 004

SPRINGS			
	Adj. press. range bar (psi)	Pressure increase bar/turn (psi/ turn)	Std. setting bar (psi) (Q=5 l/min)
= 05	15-50 (220-725)	9 (131)	50 (725)
= 20	80-210 (1160-3000)	37 (537)	200 (2900)

Type	Material number
04150403990500A	R930000377
04150403992000A	R901113637

Type	Material number