

# Solenoid operated valves pilot operated poppet type

## 2-way normally open

### Special cavity, 021-E

VEI-8A-12-NA

OD.15 - X - 21 - Y - S0

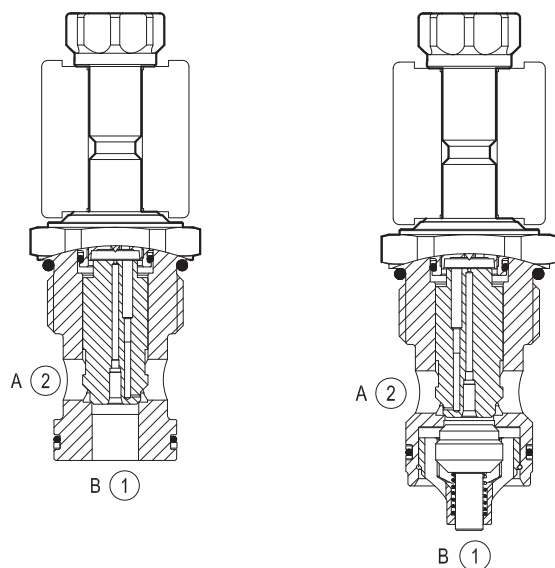
**RE 18323-08**

Edition: 01.2016

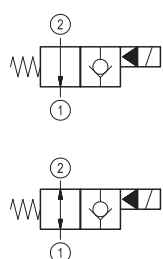
Replaces: 03.2013

**Technical data**

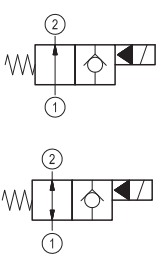
General		
Weight		0.34 kg (0.75 lbs)
Installation orientation		Optional
Ambient temperature range		-30 to 60 °C (-22 to 140 °F)
Hydraulic		
Max. operating pressure		350 bar (5000 psi)
Max. proof pressure		420 bar (6000 psi)
Flow range		5 - 150 l/min (1 - 40 gpm)
Fatigue cycle life		1 million cycles at 350 bar
Max. internal leakage		20 drops/min.
Fluid temperature range		-20 to 80 °C (-4 to 176 °F)
Fluids: Mineral-based or synthetics with lubricating properties at viscosities of 20 to 380 mm²/s (cSt)		
Installation torque		130 - 150 Nm (96 - 111 ft-lbs)
Recommended degree of fluid contamination		Nominal value max. 10 µm (NAS 8) ISO 4406 19/17/14
MTTFd		150 years see RE 18350-51
Lines bodies and standard assemblies		Please refer to section “Hydraulic integrated circuit” or consult factory
Special cavity		021-E see 18325-75
Seal kit – version 1	code material no.	RG21E201052010 R934003566
Seal kit – version 2-3-4	code material no.	RG21E201053010 R934003567
Seal kit coil	code material no.	RG12A1PNBR7010 R934003958
Other technical data		See data sheet 18350-50
Electrical		
Type of voltage		DC voltage
Coil type		S8-356 see 18325-90
Supply voltage		See data sheet 18325-90
Nominal voltage		± 10%
Power consumption		20 W
Duty cycle coil		See characteristic curves %
Type of protection		See data sheet 18325-90
Note: Coils must be ordered separately		



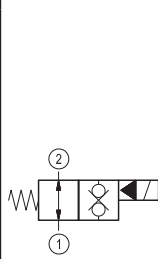
## ▼ Version 1



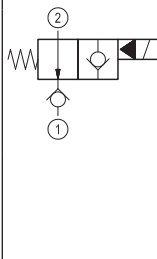
## ▼ Version 2



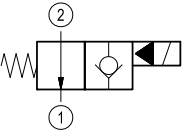
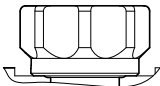
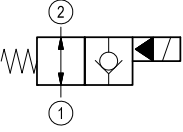
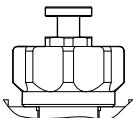
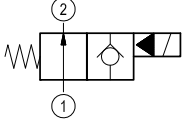
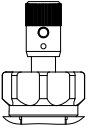
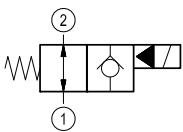
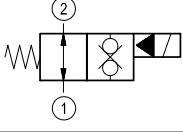
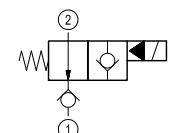
## ▼ Version 3



## ▼ Version 4



**Ordering code**

<b>OD.15</b>		<b>X</b>	<b>21</b>	<b>Y</b>	<b>S0</b>
Solenoid operated valves pilot operated poppet type 2-way normally open					Tube not welded
monodirectional type					
	02				1A 
bidirectional type					
	06				1B 
monodirectional type					
	10				1C 
bidirectional type					
	04				
bidirectional type					
	32				
monodirectional type					
	12				

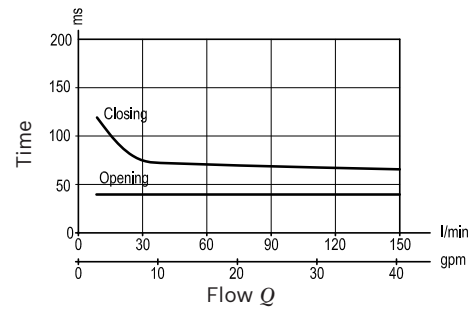
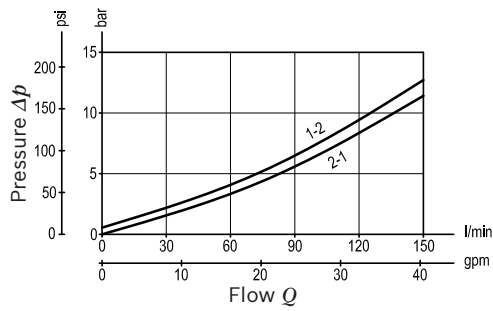
21 Special cavity: 021-E

Type	Material number
OD1502211AS000	R987067733
OD1502211BS000	R901186074
OD1502211CS000	R934000758
OD1504211AS000	R901113671
OD1504211BS000	R901113672
OD1504211CS000	R934000820
OD1506211AS000	R901104409
OD1506211BS000	R901113681
OD1506211CS000	R901172041

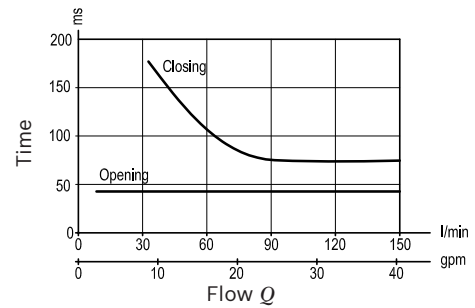
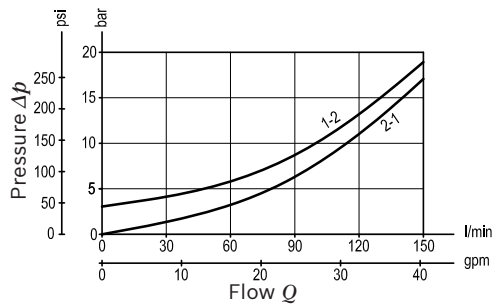
Type	Material number
OD1510211AS000	R901085464
OD1510211BS000	R934001061
OD1512211AS000	R934001100
OD1512211BS000	R934001101
OD1512211CS000	R934001102
OD1532211AS000	R901104415
OD1532211BS000	R901113685
OD1532211CS000	R901191824

**Characteristic curves****Version 1-2**

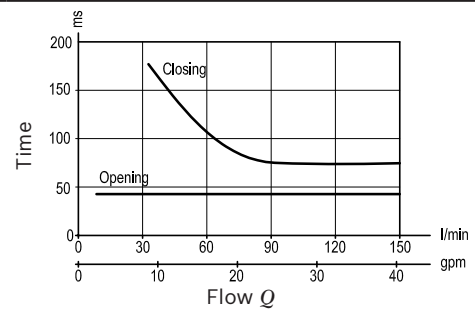
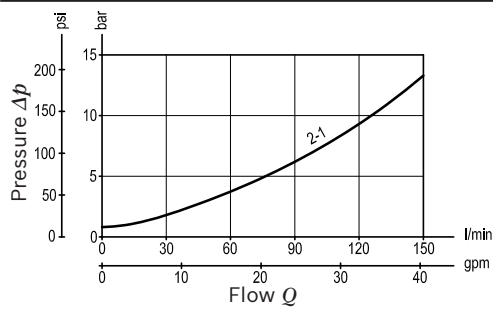
Standard

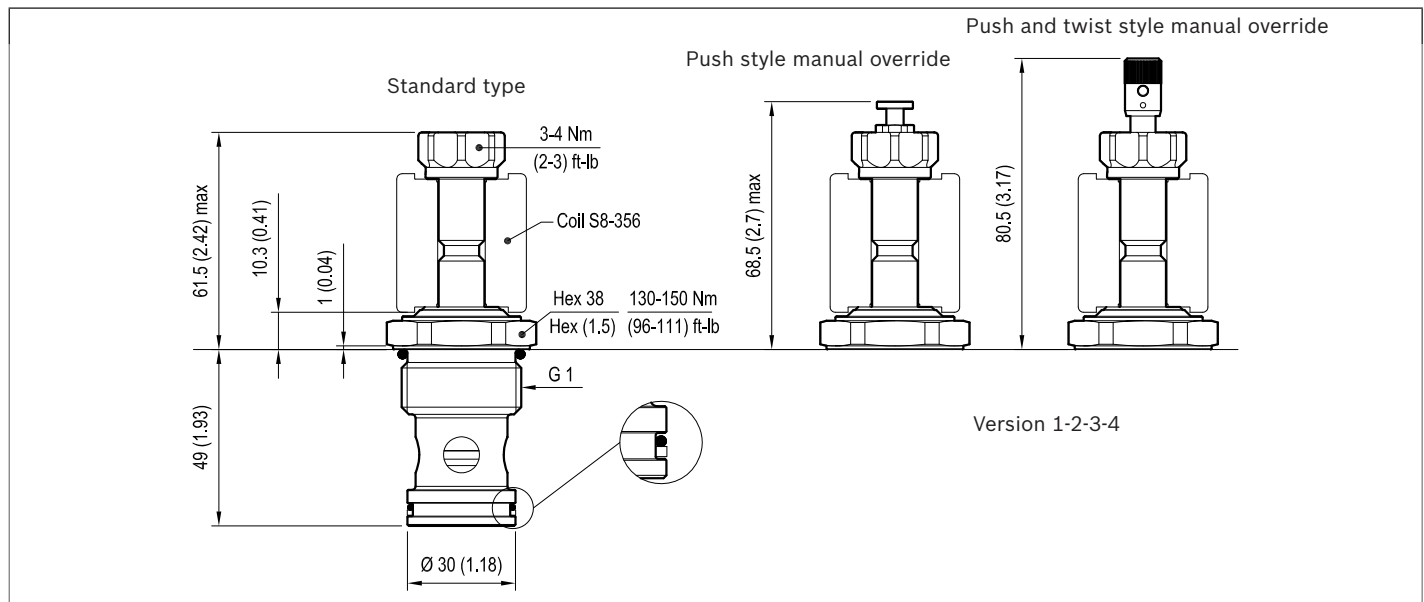
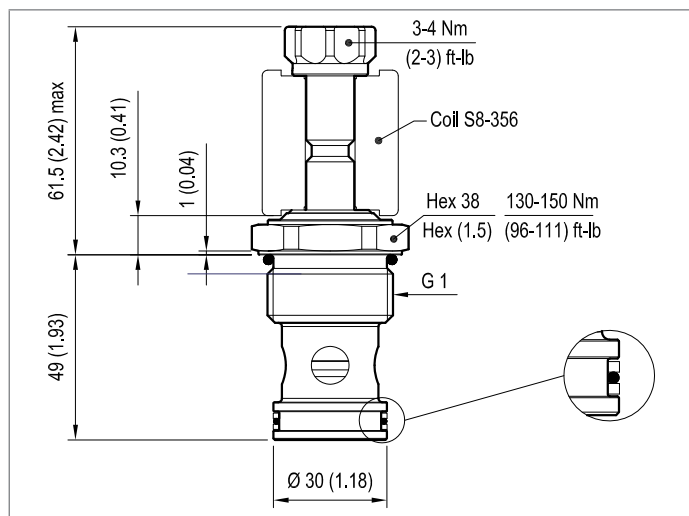
**Version 3**

Standard

**Version 4**

Standard



**Dimensions**▼ **Version 1: Solenoid operated valves, poppet 2-way normally open**▼ **Version 2: Solenoid operated valves, poppet 2-way normally open**▼ **Version 3: Solenoid operated valves, poppet 2-way double lock normally open**▼ **Version 4: Solenoid operated valves, poppet 2-way normally open**