

Solenoid operated valves pilot operated poppet type

2-way normally open

Special cavity, 017-E

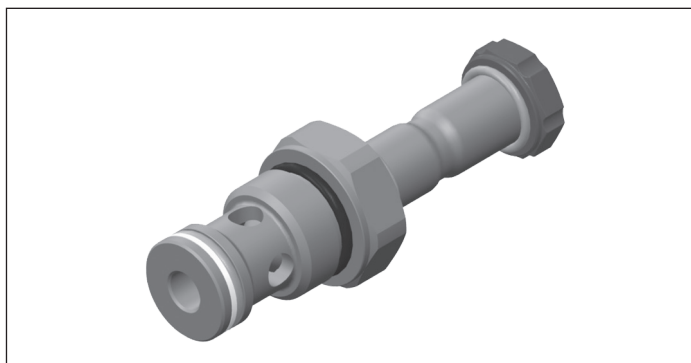
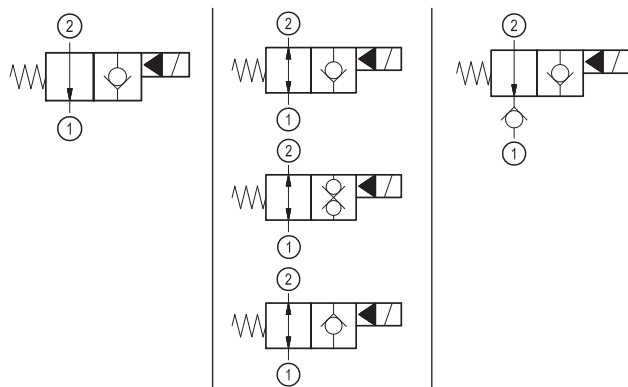
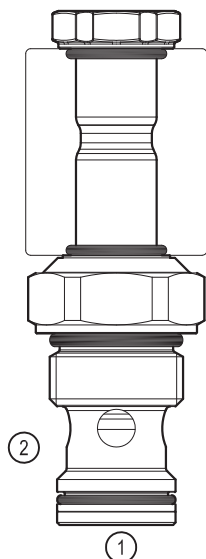
VEI-16-NA

OD.15 - X - 17 - Y - Z - 00

RE 18323-35

Edition: 12.2017

Replaces: 11.2017

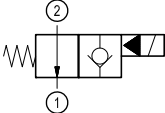
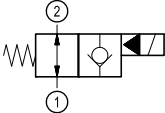
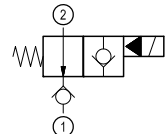
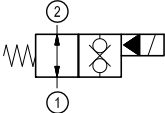
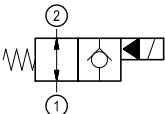
**PATENT PENDING****Technical data**

New VEI-16 family incorporates a new solenoid concept providing excellent performance and enables cartridges to work in severe environment. Cartridges also incorporates advanced design of hydraulic parts providing excellent hydraulic performance.

Technical data

| General | |
|----------------------------------------------------------------------------------------------------------------------|----------------------------------------------------|
| Weight | 0.25 kg (0.55 lbs) |
| Installation orientation | Unrestricted |
| Ambient temperature range | -30 to 90 °C (-22 to 194 °F) |
| Hydraulic | |
| Max. operating pressure | 350 bar (5000 psi) |
| Flow range | 2 - 70 l/min (0.53 - 18 gpm) |
| Fatigue cycle life | 2 million cycles at 350 bar |
| Max. internal leakage: | 20 drops/min. |
| Installation torque | 54 - 66 Nm (40 - 49 ft-lbs) |
| Switching time | Opening ≤ 50 ms Closing ≤ 100 ms |
| Fluid temperature range | -20 to 80 °C (-4 to 176 °F) |
| Fluids: Mineral-based or synthetics with lubricating properties at viscosities of 20 to 380 mm ² /s (cSt) | |
| Recommended degree of fluid contamination | Nominal value max. 10 µm (NAS 8) ISO 4406 19/17/14 |
| MTTFd | 150 years see RE 18350-51 |
| Special cavity | 017-E see 18325-75 |
| Seal kit for X= 02,06,12 | code material no. RG17E201052010 R934003562 |
| Seal kit for X= 04,32 | code material no. RG17E201053010 R934003563 |
| Seal kit coil and standard cap | code material no. RG02Z0010000100 R930067869 |
| Seal kit coil and protective cap only for Y=B,C | code material no. RG03Z0010000100 R930067870 |
| Other technical data | See data sheet 18350-50 |
| Electrical | |
| Type of voltage | DC voltage |
| Coil type | D36 |
| Supply voltage | See data sheet 18325-90 |
| Voltage tolerance against ambient temperature | See characteristic curve |
| Power consumption | 20 W |
| Type of protection | See data sheet 18325-90 |
| Note: Coils must be ordered separately | |

Ordering code

| OD.15 | X | 17 | Y | Z | 0000 | * |
|-------------------------------------------------------------------------------------|----|----|---|---|------|--------------------------------------------------------------------------------------------------------------------------------------------------------------------------------------------------------------------|
| Solenoid operated valves pilot operated poppet type 2-way normally open | | | | | | Series O/A to L unchanged performances and dimensions |
| monodirectional type | | | | | | 0 = With buna seal V = With Viton seal P = With buna seal and protective cap for override version B and C T = With Viton seal and protective cap for override version B and C |
|  | 02 | | | | | |
| bidirectional type | | | | | | |
|  | 06 | | | | | |
| monodirectional type with check | | | | | | |
|  | 12 | | | | | |
| bidirectional type | | | | | | A = Standard B = Push style manual override C = Push and twist style manual override |
|  | 32 | | | | | |
| bidirectional type | | | | | | |
|  | 04 | | | | | |
| | | | | | | Special cavity: 017-E |

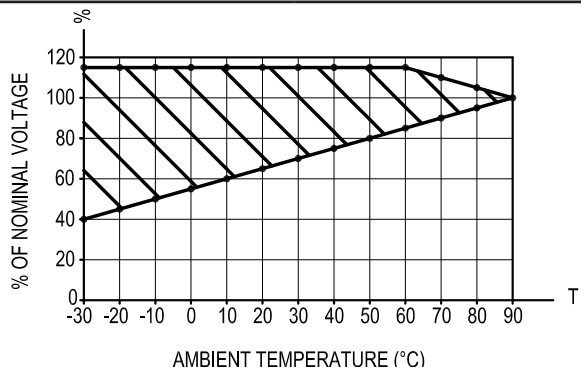
Preferred types

| Type | Material number |
|-----------------|-----------------|
| OD150217A000000 | R930063870 |
| OD150217C000000 | R930065471 |
| OD150617A000000 | R930064265 |
| OD150617B000000 | R930064334 |
| OD150617C000000 | R930063423 |
| OD151217A000000 | R930063907 |
| OD153217A000000 | R930064102 |
| OD153217B000000 | R930067161 |

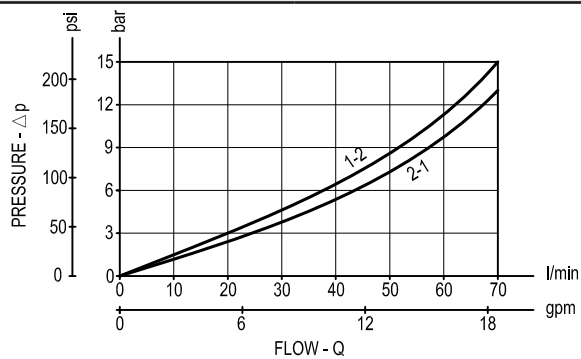
| Type | Material number |
|-----------------|-----------------|
| OD153217BP00000 | R930067159 |
| OD153217C000000 | R930067160 |
| OD153217CP00000 | R930067157 |
| OD150417A000000 | R930066966 |
| | |
| | |
| | |
| | |

Characteristic curves

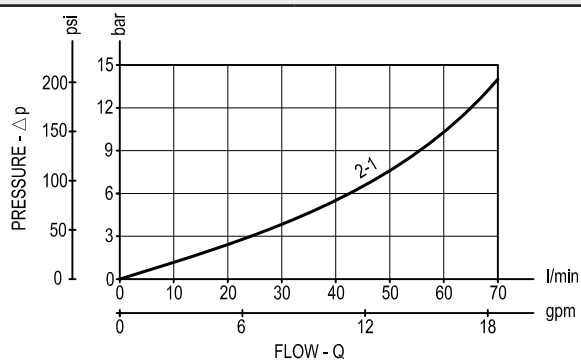
All Versions - Admissible supply voltage Vs. Ambient temperature at 100% duty cycle



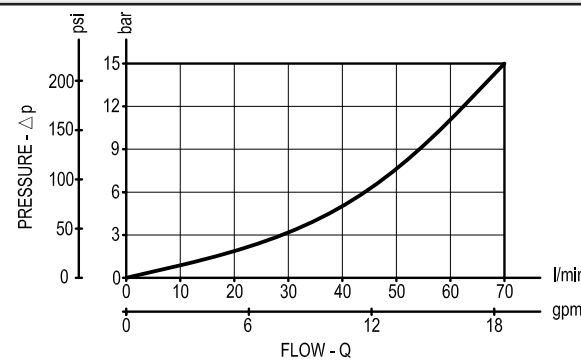
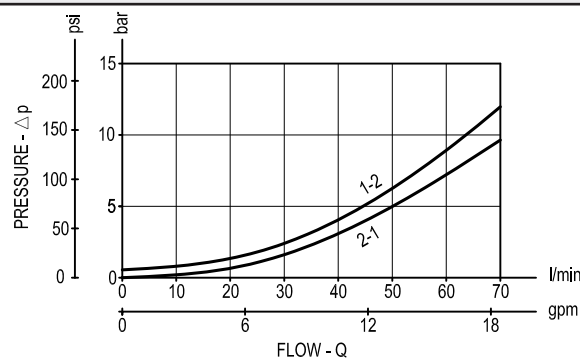
Versions 02, 06



Version 12



Version 32 Version 04



Dimensions

Solenoid operated valves, poppet 2-way
normally open

