

Relief, direct acting guided poppet type Common cavity, Size 10

VSBG-10A

04.11.56 - X - 85 - Z

RE 18318-06

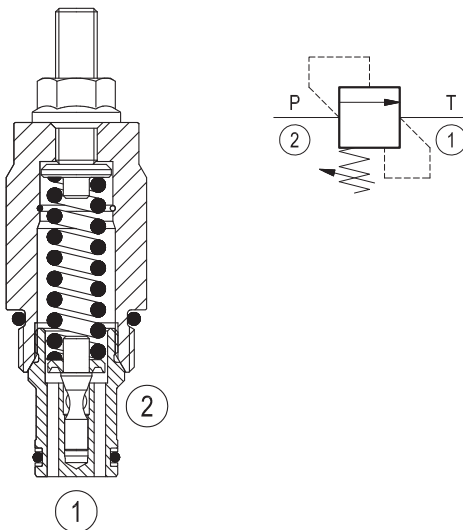
Edition: 03.2016

Replaces: 09.2009



Description

Flow is blocked from 2 to 1 until pressure increases to meet the selected valve setting, lifting the poppet from its seat and allowing relief flow through port 1 to tank. Pressure at port 1 is additive to the relief setting of the valve. The unique Bosch rexroth oil control poppet design provides enhanced stability at all flows and pressures.



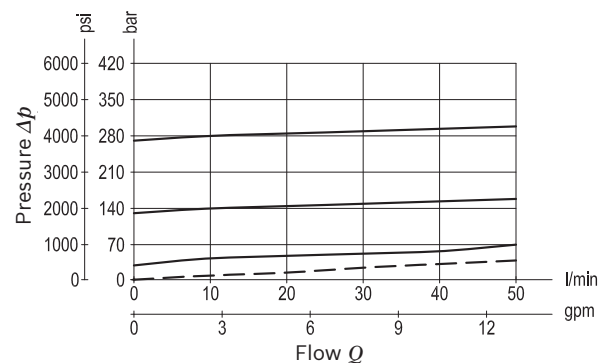
Technical data

Max. operating pressure port 1 (P)	350 bar (5000 psi)
Max. pressure admitted port 2 (T)	350 bar (5000 psi)
Max. flow	50 l/min (13 gpm)
Max. internal leakage ¹⁾	15 drops/min.
Fluid temperature range	-30 to 100 °C (-22 to 212 °F)
Installation torque	41 - 47 Nm (30 - 35 ft-lbs)
Weight	0.2 kg (0.44 lbs)
Cavity	CA-10A-2N (see data sheet 18325-70)
Lines bodies and standard assemblies	Please refer to section "Hydraulic integrated circuit" or consult factory
Seal kit ²⁾	Code: RG10A2010530100 material no: R901111366
Fluids	Mineral-based or synthetics with lubricating properties at viscosities of 10 to 500 mm ² /s (cSt)
Recommended degree of fluid contamination	Nominal value max. 10µm (NAS 8) / ISO 4406 19/17/14
Installation position	No restrictions
Other Technical Data	See data sheet 18350-50

1) At 80% of pressure setting

2) Only external seals for 10 valves

Characteristic curve



Ordering code

04.11.56	X	85	Z	00	*
----------	---	----	---	----	---

Relief, direct acting guided
poppet type

Adjustments

03 Leakproof hex. socket screw

85 Common cavity, Size 10

Series 0/A to L
unchanged performances and dimensions

Version and options standard

SPRINGS			
	Adj. press. range bar (psi)	Pressure increase bar/turn (psi/turn)	Std. setting bar (psi) Q=5 l/min
05	* 5-70 (75-1000)	16 (232)	50 (725)
10	35-140 (500-2000)	24 (348)	100 (1450)
20	105-210 (1500-3000)	54 (783)	200 (2900)
35	175-350 (2500-5000)	84 (1218)	350 (5000)

Note: Special settings available. Contact factory authorized representative for ordering code.

* minimum pressure setting intended with Q=5 l/min

Preferred types

Type	Material number
041156038505000	R901157894
041156038510000	R901113622
041156038520000	R901113624
041156038535000	R901113626

Type	Material number

Dimensions

