

# SOUNDERS 105/110 dB(A) DS 5 / DS 10



The sounders from the DS 10 / DS 5 series can be used for tough demands under industrial conditions and as universal alarms. The sounders, which are suitable for use both indoors and outdoors, generate warning signals in 31 different tones can be selected with the aid of an internal switch. Optionally, a maximum of 3 additional tones can be switched to by means of an external controller. In addition to the factory settings, the tone combination can be individually selected by means of on-site programming (tone 32). Custom versions are available for special applications. The GL version is especially resistant to shock and vibration.

- Volume control (DS 5).



protection  
system



operating  
temperature



acoustic  
penetration



warranty



## PRODUCT DS 5

### DATA

Operating range	195–253 V	95–127 V	19–29 V	10–15 V	19–29 V	41–53 V
	AC 50   60 Hz			DC		
Nominal current consumption	30 mA	60 mA	280 mA	280 mA	280 mA	280 mA

## PRODUCT DS 10

### DATA

Operating range	195–253 V	95–127 V	19–29 V	10–15 V	19–29 V	41–53 V
	AC 50   60 Hz			DC		
Nominal current consumption	60 mA	120 mA	420 mA	300 mA	420 mA	420 mA

## PRODUCT DS 5 DS 10

### DATA

Sound pressure level	105 dB(A)	110 dB(A)
Sound level reduction	–20 dB via potentiometer (optional)	
Alarm tones	32 / 4 tones are externally selectable	
Operating temperature	–40 °C ... +55 °C	
Storage temperature	–40 °C ... +70 °C	
Relative humidity	90 %	
Protection system according to EN 6052	IP 66   IP 67	
Material	die-cast aluminium GD-Al Si12 Cu	
Surface coating	epoxy resin paint RAL 3000, flame red	
Cable bushing	2x M20 (1x chrome-plated brass cable fitting, 1x chrome-plated brass blanking plug)	
Clamping range of the cable fitting	8–12 mm	
Connecting terminals	max. 2.5 mm <sup>2</sup>	
Weight	AC: 2.15 kg   DC: 1.95 kg	

## OPTIONS/ACCESSORIES



DS 5

LSR:  
volume  
control



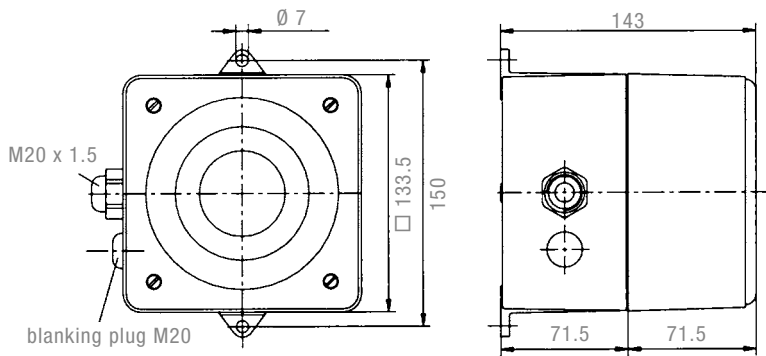
TAS: External tone selection (2 variants) for controlling several tones over great distances:  
1: for all voltages = potential-free NO function  
2: for 12 V / 24 V = voltage input



GL  
30457-83-HH



## DIMENSIONS



## TABLE

TONE TABLE							
NO.	DESCRIPTION – BASIC TONE (PRESET: TONE 2)		STAGE			NO.	DESCRIPTION – BASIC TONE (PRESET: TONE 2)
			2	3	4		
0	no tone		2	88	57	92	Interrupted tone
2 <sup>1</sup>	Sawtooth, DIN tone 33404-3 Germany (emergency signal), PFEER PTAP	1200 Hz 1 s EN 54-3	128	112	57	93	Interrupted tone (fast), horn
15	Slow whoop, NEN 2575 evacuation alarm Netherlands	1200 Hz 3,5 s 0,5 s	131	54	112	97	Interrupted tone
23	Siren	2400 Hz 3 s const.	24	60	112	98	Interrupted tone, Sweden SS031711 (emergency signal)
24	Siren	1200 Hz 3 s const.	55	23	131	100	Interrupted tone, industrial alarm Germany
26	Pulsating tone, industrial alarm Germany	1000 Hz 10 s 40 s 10 s	2	100	93	108	Interrupted tone
31	Sweeping, France NFC48-265	1600 Hz 1 s 0,5 s	128	54	57	112	Interrupted tone, ISO8201 (emergency evacuation signal)
32	Selection of available tone combinations in stages 2, 3 and 4					116	Interrupted tone, IMO (leave ship)
36	Sweeping	1500 Hz 1,5 s 1,5 s	146	67	57	117	Interrupted tone, IMO SOLAS III/50 + SOLAS III/6.4 (general alarm)
45	Sweeping	1200 Hz 3 s 3 s	2	57	93	125	Alternating tone
54	Continuous tone, Finland (all-clear signal)	1500 Hz	2	57	67	127	Alternating tone
55	Continuous tone, PFEER gas alarm	1200 Hz	2	88	128	128	Alternating tone
57	Continuous tone, UK BS5839-1	950 Hz EN 54-3	2	128	88	131	Alternating tone, UK BS5839-1 (fire alarm, railway crossing)
60	Continuous tone	825 Hz	24	93	125	142	Alternating tone
63	Continuous tone	725 Hz	2	97	93	146	Alternating tone, France NFS 32-001 (fire alarm)
67	Continuous tone, Germany KTA3901 (all-clear signal)	500 Hz	24	93	125		
88	Interrupted tone	950 Hz 1 s 1 s	2	57	128		
90	Interrupted tone	825 Hz 0,5 s 0,5 s	2	127	108		

<sup>1</sup> factory setting

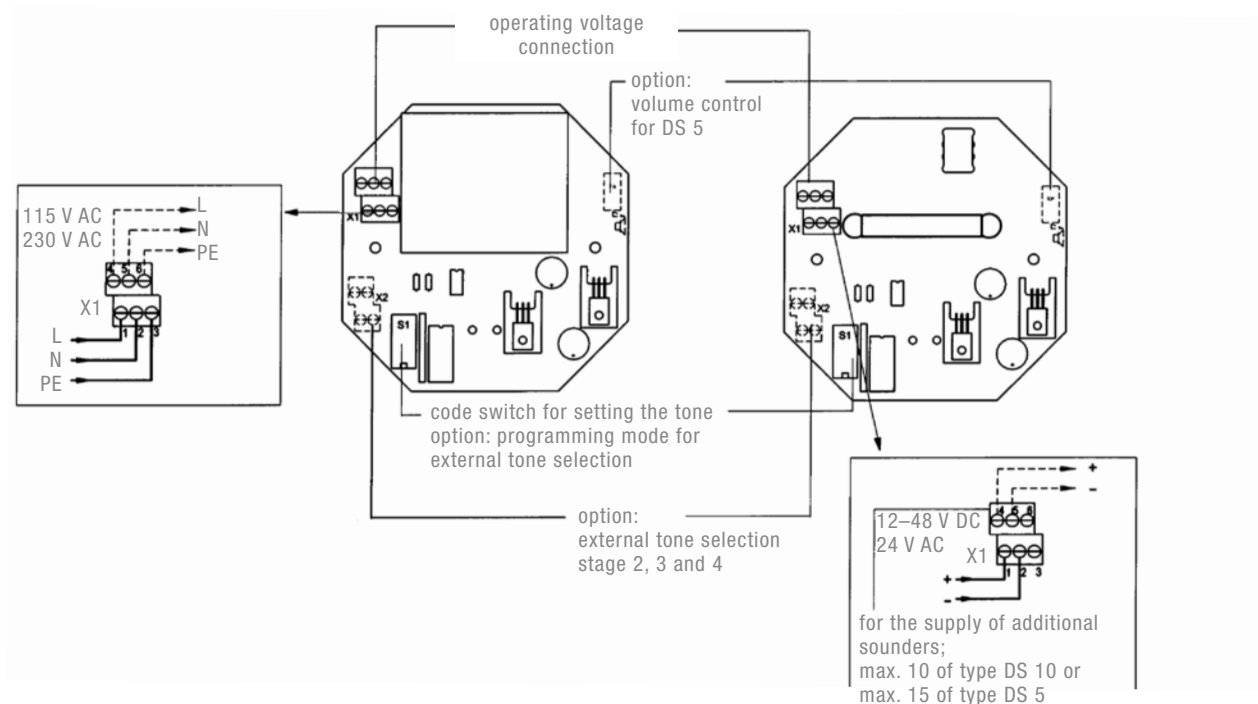
ARTICLE NO.	DS 5			DS 10		
VERSION	230 V AC	115 V AC	24 V DC	230 V AC	115 V AC	24 V DC
Standard	23106100000	23106150000	23106800000	23111100000	23111150000	23111800000
GL	23106100001	23106150001	23106800001	23111100001	23111150001	23111800001
LSR	23106100151	23106150151	23106800151			
TAS	23106100152	23106150152	23106800152	23111100152	23111150152	23111800152

Article numbers for other voltages and versions on request.

## CONNECTION DIAGRAM

DS 5 | DS 10 – AC

DS 5 | DS 10 – DC



## CONFORMITY TO STANDARDS

DIN EN 54-3: 2001 +  
DIN EN 54-3/A1: 2001 Fire alarm systems – part 3: fire alarm devices;  
EN 50 130-4: 1996 Audible signaling devices and annex A1  
Stability of system components for fire and  
burglar alarm systems

EN 61 000-6-2 EMC, stability for industrial areas  
EN 61 000-6-3 EMC, emission standard for residential commercial,  
and light-industrial environments

EN 60 947-1: 2003 Low voltage switchgear standard  
EN 60 529: 2000 Protection system by enclosure (IP code)

DIN EN ISO 7731 Ergonomic – alarms for public areas  
and workplaces – acoustic alarms

DIN 33 404/3: 1982 Alarms for workplaces,  
unified emergency signal

ISO 8201: 1987 Evacuation alarm

DIN EN 981: 1997 System of acoustic and visual alarm signals  
and information signals

ISO 11 429: 1996 System of acoustic and visual alarm signals  
and information signals