

RE 18320-16/01.10

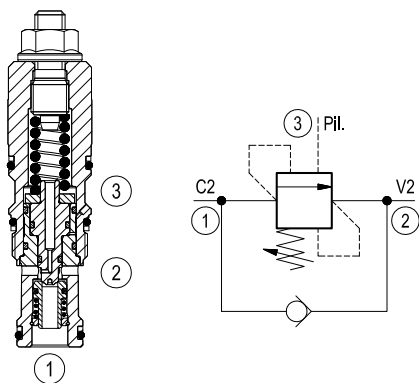
1/2

Replaces: RE 00162-02/01.06

Counterbalance, standard guided poppet type, counterclockwise adjustment SUN cavity interchange, T-11A

VBSN-08UU-RS

04.52.42 - X - 20 - Z

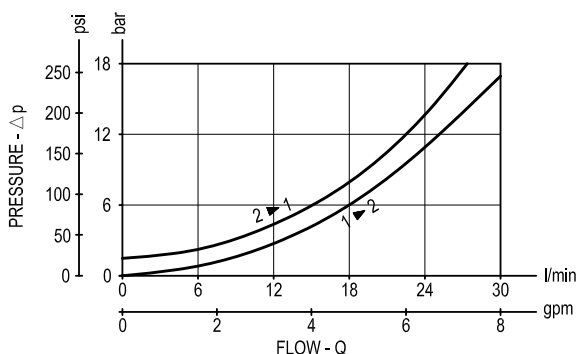


Description

When pressure at 2 rises above the spring bias pressure, the check seat is pushed away from the piston and flow is allowed from 2 to 1.

When load pressure at 1 rises above the pressure setting (turn counterclockwise to increase setting - turn clockwise to decrease setting), the direct-acting, relief function is activated and flow is relieved from 1 to 2. With pilot pressure at 3, the pressure setting is reduced in proportion to the stated ratio of the valve, until fully open with free-flow from 1 to 2. The spring chamber is drained to 2, and any back-pressure at 2 is additive to the pressure setting in all functions.

Performance



Technical data

Max. operating pressure	bar (psi)	280 (4000)
Max. flow	l/min. (gpm)	30 (8)
Max. internal leakage (*)	drops/min.	15
Fluid temperature range	°C (°F)	-30 to 100 (-22 to 212)
Installation torque	Nm (ft-lbs)	40-50 (30-37)
Weight	kg (lbs)	0.18 (0.4)
Cavity		SUN T-11A
Seal kit (**)	code material no.	RG08U9020110100 R901193388
Fluids		Mineral-based or synthetics with lubricating properties at viscosities of 10 to 500 mm ² /s (cSt)
Filtration		Nominal value max. 10µm (NAS 8) ISO 4406 19/17/14
Installation		No restrictions
Other Technical Data		See data sheet RE 18350-50

Pressure setting: at least 1.3 times the load induced pressure.

(*) At 70% of pressure setting

(**) Only external seals for 10 valves

