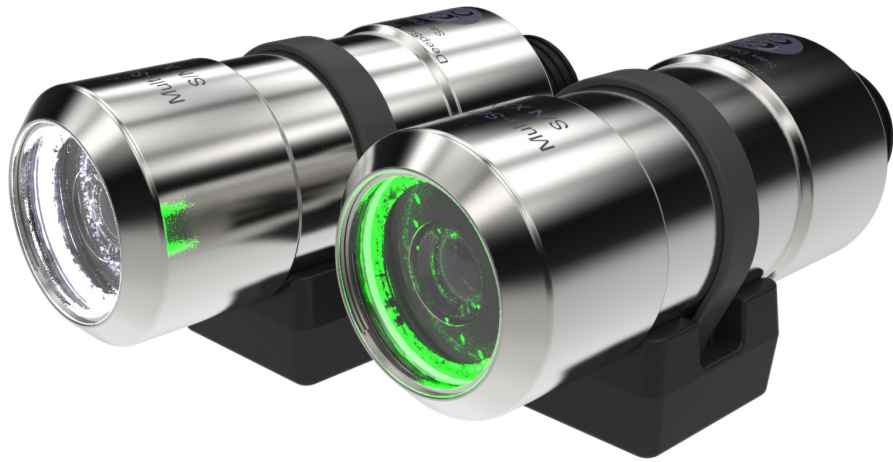




LED Multi SeaCam®

The Multi-Purpose, Versatile Camera with Built-in LEDs.



FEATURES

Color, Black & White, or Low-Light Black & White

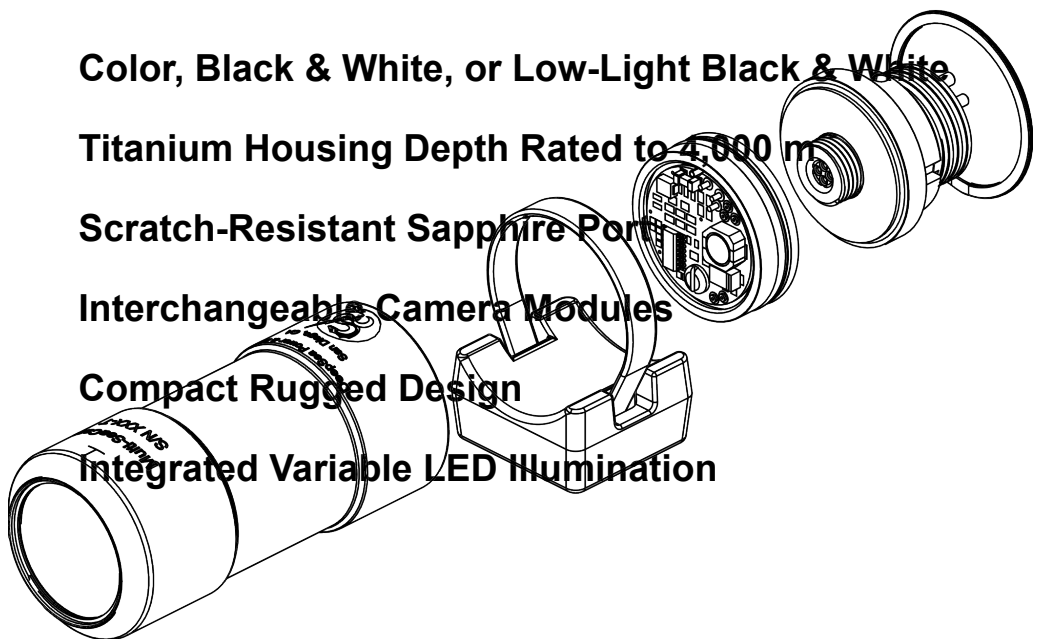
Titanium Housing Depth Rated to 4,000 m

Scratch-Resistant Sapphire Port

Interchangeable Camera Modules

Compact Rugged Design

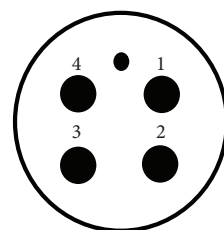
Integrated Variable LED Illumination



LED Multi SeaCam®

| | LEDMS-1055 | LEDMS-1065 | LEDMS-2065 |
|--------------------------------|---|---|---|
| Mechanical Specifications | | | |
| Housing | Titanium | | |
| Port | Sapphire | | |
| Outer Diameter | 47.4 mm [1.86 in.] | | |
| Overall Length (w/o connector) | 106.5 mm [4.19 in.] | | |
| Weight in Air | 459 g [16 oz.] | | |
| Weight in Water | 112 g [4 oz.] | | |
| Environmental Specifications | | | |
| Depth Rating | 4,000 m | | |
| Operating Temp. | 20° C to 40° C [-4° F to 104° F] | -10° C to 40° C [14° F to 104° F] | -30° C to 40° C [-22° F to 104° F] |
| Optical Specifications | | | |
| Lens | 2.8 mm, f/2.8 | 5 mm, f/2.8 | 3.0 mm, f/2.0 |
| Focus | Fixed focus, wide angle | Fixed focus | Fixed focus, wide angle |
| Depth of Field | 10 cm [4 in.] to infinity | 30 cm [12 in.] to infinity | 10 cm [4 in.] to infinity |
| FOV in Air | 106° H x 78° V x 149° D | 77° H x 56° V x 98° D | 95° H x 75° V x 130° D |
| FOV in Water | 77° H x 59° V x 98° D | 57° H x 45° V x 71° D | 75° H x 60° V x 85° D |
| Video Specifications | | | |
| Image Sensor | 1/3 inch CCD image sensor | 1/2 inch CCD image sensor | 1/3 inch CCD image sensor |
| Number of Pixels | 537 H x 505 V (EIA) | 811 H x 508 V (EIA); 795 H x 596 V (CCIR) | 768 H x 494 V (NTSC); 752 H x 582 V (PAL) |
| Resolution | 400+ TV lines horizontal | 570 TV lines horizontal | 460 TV lines horizontal |
| Scene Illumination | 0.27 Lux at f2.8 | 0.01 Lux at f2.8 | 1.1 Lux at f2.0 |
| Signal to Noise | More than 45 dB | 46 dB | More than 45 dB |
| Video Output | 1.0 volt peak-to-peak into 75 ohm | | |
| Video Format | EIA (RS170) | EIA (RS170) or CCIR | NTSC or PAL |
| Electrical Specifications | | | |
| Power | 11~30 VDC Below 14 VDC, the LED output maybe diminished. | 11~30 VDC Below 14 VDC, the LED output maybe diminished. | 11~30 VDC Below 14 VDC, the LED output maybe diminished. |
| Current | Camera 110 mA LED's 0~250 mA Total max 360 mA | Camera 160 mA LED's 0~250 mA Total max 410 mA | Camera 200 mA LED's 0~250 mA Total max 450 mA |
| LED Color Ring | Green | Green | White |

Standard Connector

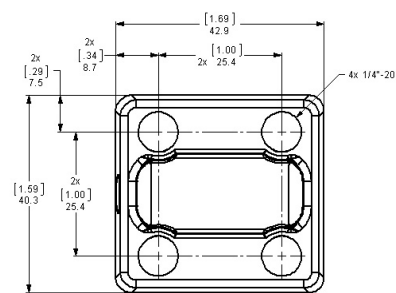
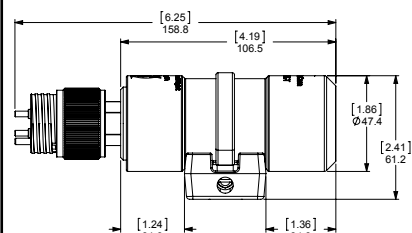


BH4MP

- 1 = Ground
- 2 = Power
- 3 = Video
- 4 = Not Used

*Other connectors and pin-out options are available upon request.

Dimensions



[inch]
mm

