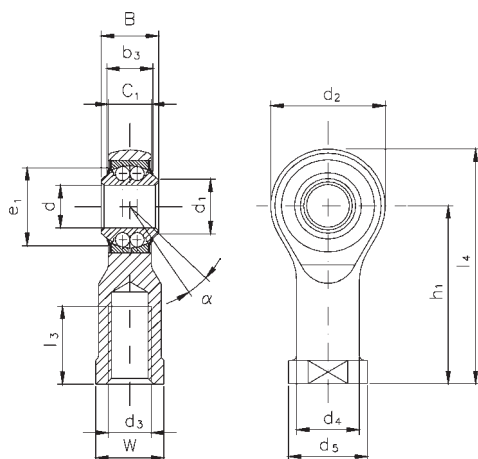


## Ball bearing

Mounting sizes acc.  
to DIN ISO 12240-4  
dimension series K

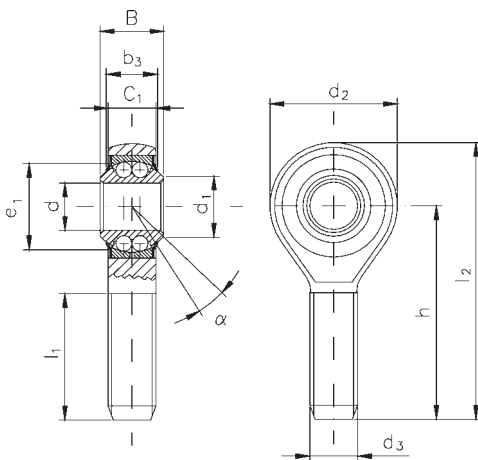
<b>Inner ring:</b>	Antifriction bearing steel, hardened, raceway precision ground.
<b>Housing:</b>	To size 12 made of free-cutting steel with bearing outer ring pressed into housing, raceway precision ground. Size 16 made of case hardening steel, raceway hardened and precision ground.
<b>Rolling element:</b>	Balls made from through-hardened, antifriction bearing steel.
<b>Cover washer:</b>	Aluminium sheet, caulked in housing.
<b>Lubrication:</b>	The rod ends are given lifetime lubrication. There is, however, a version available on request for a swivel angle of $< 5^\circ$ which requires subsequent lubrication.
<b>Note:</b>	With these rod ends, it is important to ensure that the tilt angle specified in the table is not exceeded, either while mounting or during operation, otherwise the cover washers may be damaged.

## Female thread



Designation		d	d <sub>3</sub>	B	C <sub>1</sub>	b <sub>3</sub> ≈	d <sub>1</sub> ≈	d <sub>2</sub>
Righthand thread	Lefthand thread	mm	mm	mm	mm	mm	mm	mm
KUI 6	KUIL 6	6	M6	9	6.75	7.5	8.5	21
KUI 8	KUIL 8	8	M8	12	9.00	10.5	10.1	25
KUI 10	KUIL 10	10	M10	14	10.50	12.0	12.8	29
KUI 12	KUIL 12	12	M12	16	12.00	13.5	15.0	33
KUI 16	KUIL 16	16	M16	21	15.00	18.0	19.3	43

## Male thread



Designation		d	d <sub>3</sub>	B	C <sub>1</sub>	b <sub>3</sub> ≈	d <sub>1</sub> ≈	d <sub>2</sub>
Righthand thread	Lefthand thread	mm	mm	mm	mm	mm	mm	mm
KUA 6	KUAL 6	6	M6	9	6.75	7.5	8.5	21
KUA 8	KUAL 8	8	M8	12	9.00	10.5	10.1	25
KUA 10	KUAL 10	10	M10	14	10.50	12.0	12.8	29
KUA 12	KUAL 12	12	M12	16	12.00	13.5	15.0	33
KUA 16	KUAL 16	16	M16	21	15.00	18.0	19.3	43