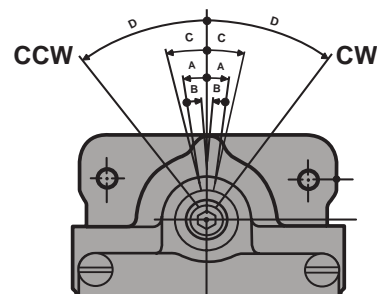




Double pole, double break, double throw, heavy duty limit switch having mechanical travel of 10° to trip and with two normally open and two normally closed circuit.

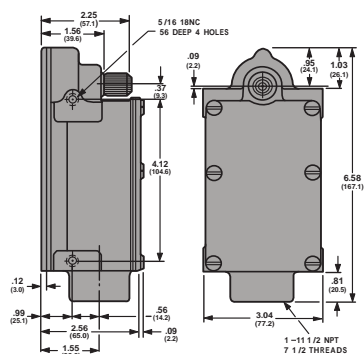
*Can be supplied with standard, wide or long mounting.*



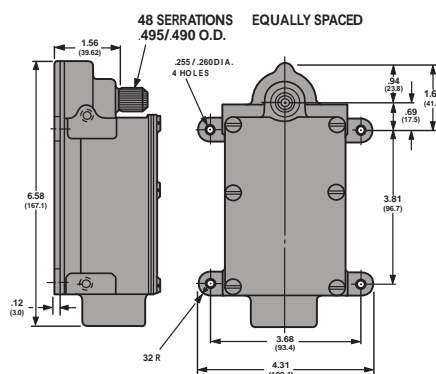
### Direction of Rotation

- A. Trip Travel ..... 10°
- B. Reset Travel ..... 8°
- C. Recommended Travel ..... 13°
- D. Total Travel ..... 37°
- E. Torque to Trip (Inch Lbs.) ..... 23°
- F. Weight: Approx. .... 3.5 Lbs.

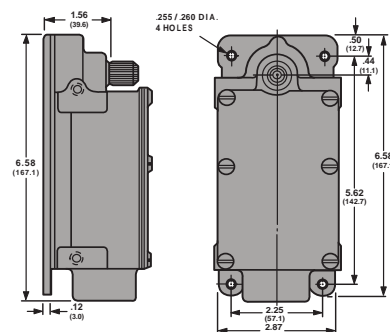
### Dimensions and Mounting



**Standard Mounting**



**Wide Mounting**



**Long Mounting**

*All dimensions given in US & Metric: Inches (mm)*

ORDERING INFO	ORDERING NUMBERS		
TYPE MOUNTING	ROTATION CW	ROTATION CCW	MAINTAINED (WITHOUT RETURN SPRING)
STANDARD MOUNTING	EA170-11100	EA170-12100	EA170-13100
WIDE MOUNTING	EA170-21100	EA170-22100	EA170-23100
LONG MOUNTING	EA170-31100	EA170-32100	EA170-33100

### Contact Configurations



FOR  
CW  
SWITCH



FOR  
CCW  
SWITCH



### Specifications

Heavy Duty, Machine Tool Type, Double Pole, Double Throw, Quick Make, Quick Break, Butt Type, NEMA Form "Z" Contacts.

Enclosure is Water, Oil and Dust Tight. Meets (NEMA) 1, 4, & 13 Requirements.

Torque Necessary for Operation of Switch 23 in. lb. (Without Return Spring, Item 23, 10 in. lb.)

Ambient Temperature: -20°C to + 90°C

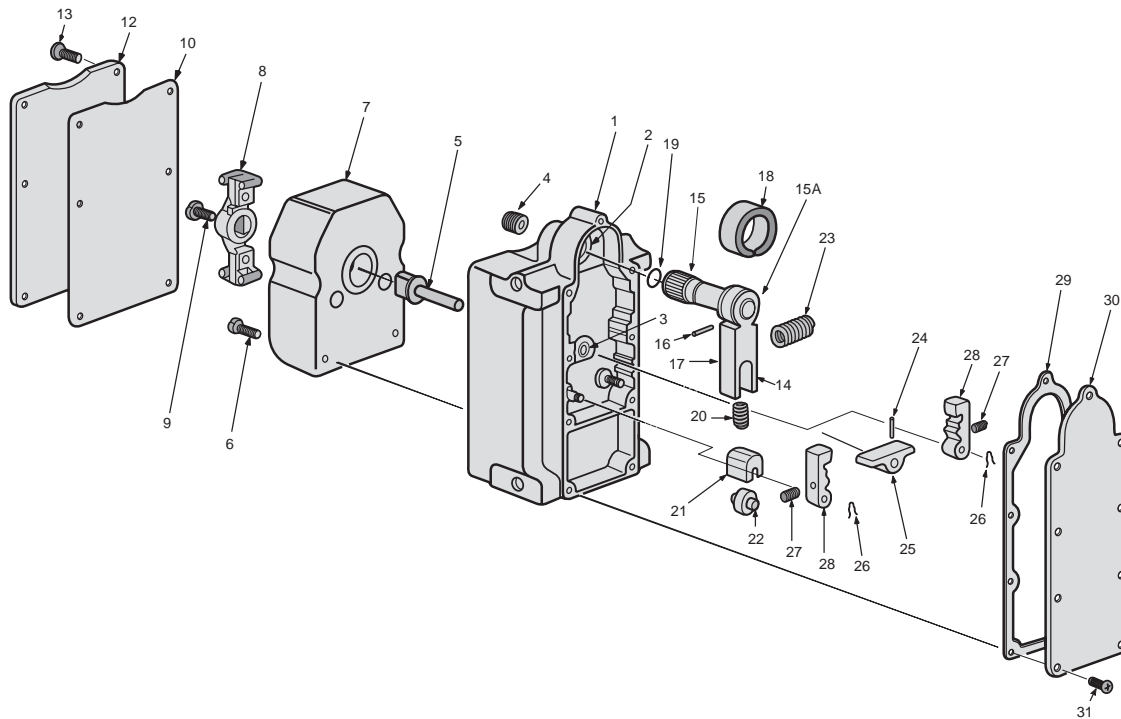
Continuous Current Rating - Amperes

75-100% Power Factor

External Lever is Adjustable by 7°30' Increments thru 167°

Volts	AC	DC
125	20	5
250	15	1.5
480	10	
600	5	

### Parts List



ITEM NO.	DESCRIPTION	QTY.	ITEM NO.	DESCRIPTION	QTY.
1	HOUSING ASSY.	1	17	LEVER (ONLY)	1
2	BUSHING	1	18	TORSION SPRING	1
3	BUSHING	1	19	"O"-RING	1
4	PIPE PLUG	1	20	SPRING	1
5	CONTACT LEVER SHAFT	1	21	ROLLER SLIDE	1
6	CONTACT BLOCK SCREW	4	22	ROLLER	1
7	CONTACT BLOCK ASSEMBLY	1	23	RETURN SPRING	1
8	LEVER	1	24	ROLL PIN	1
9	SEMS SCREW	1	25	ROCKER	1
10	TOP COVER GASKET	1	26	RETAINING CLIP	2
12	TOP COVER	1	27	LATCH SPRING	2
13	TOP COVER SCREW	6	28	LATCH	2
14	LEVER SHAFT ASSY. (INCLUDES ITEMS 15, 15A, 16, 17 & 18)	1	29	BOTTOM COVER GASKET	1
15	SHAFT	1	30	BOTTOM COVER	1
15A	SPRING LEVER	1			
16	ROLL PIN	1	31	BOTTOM COVER SCREW	9