

Flow regulator

3 way, pressure compensated with relief

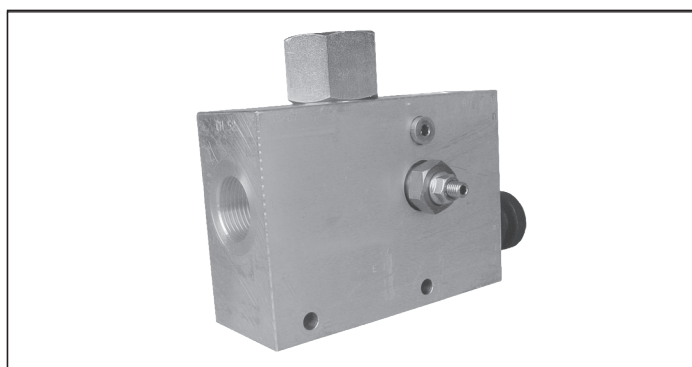
VRFC3-VS

0M.33.03 - X - Y

RE 18309-45

Edition: 12.2017

Replaces: 03.2016



Description

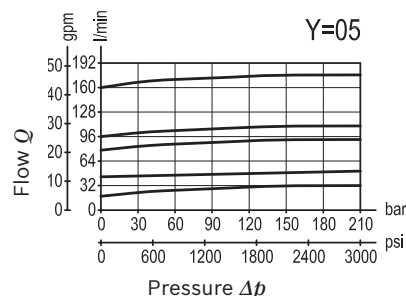
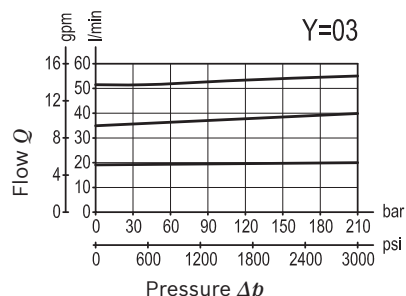
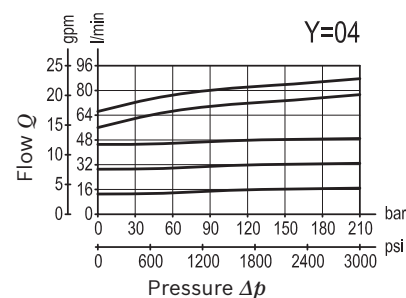
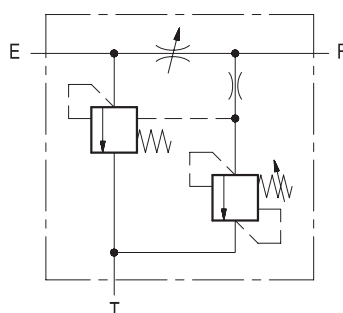
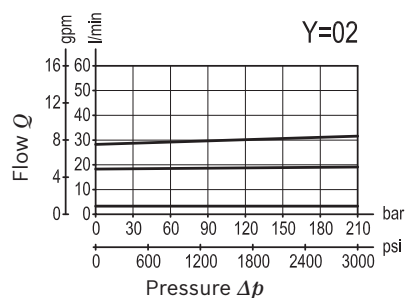
A constant pressure compensated flow rate is established from E to R, while a minimum pressure differential of appr. 5 bar (70 psi) exists between the two ports. Input flow supplied to E in excess of the regulated output at R is bypassed to T. Output flow can be varied from closed to the nominal maximum rating for the valve. The valve module includes a small pilot relief cartridge which senses the pressure of the Regulated flow and diverts it to tank if the maximum allowed pressure is reached. Reverse flow from R to E is limited by the selected opening of the restrictor and is not pressure compensated. Flow from T to E or from T to R is not permitted.

Technical data

Max. pressure	210 bar (3000 psi)
Adj. relief valve: range	35-210 bar (500-3000 psi)
Standard setting:	210 bar (3000 psi)
QE= max. inlet flow "E" port (see "Dimensions")	
QR= max. regulated flow "R" port (see "Dimensions")	
Flow range adjustment	0 - 3 turns
Weight	see "Dimensions"
Manifold material	Aluminium
Note: aluminium bodies are often strong enough for operating pressures exceeding 210 bar (3000 psi), depending from the fatigue life expected in the specific application. If in doubt, consult our Service Network.	
Fluid	Mineral oil (HL, HLP) according DIN 51524
Fluid temperature range	-30 °C to 100 (-22 to 212 °F)
Viscosity range	10 to 500 mm ² /s (cSt)
Recommended degree of fluid contamination	Class 19/17/14 according to ISO 4406
Other technical data	see data sheet 18350-50

Note: for applications outside these parameters, please consult us.

Characteristic curve



Ordering code

0M.33.03

X

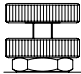
Y

Flow regulator
3 way, pressure compensated
with relief

Adjustments

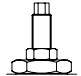
70

Handknob and locknut



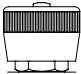
80

Screw and locknut



40

Graduated handknob



Port sizes

E - R - T

02

G 3/8

03

G 1/2


04

G 3/4

05

G 1

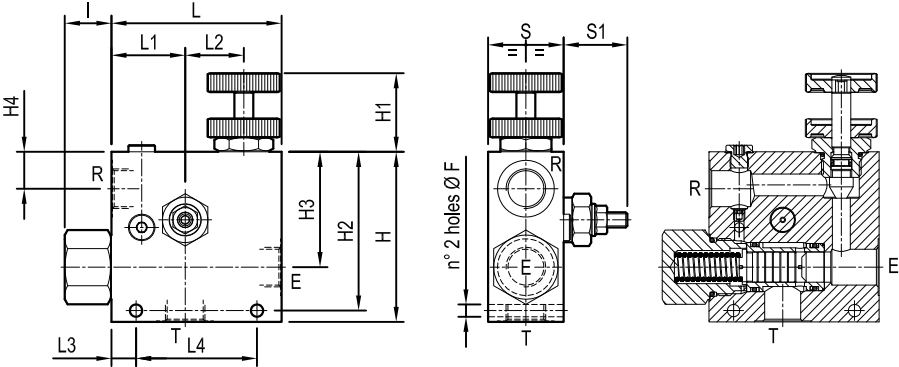
Tamper resistant cap code
ordering code 11.04.23.002
Mat. no. R930000752



Preferred types

Type	Material number	Type	Material number
0M330370020000A	R930004260	0M330380040000A	R930004268
0M330370030000A	R930004262	0M330380050000A	R930004270
0M330370040000A	R930004263	0M330340020000A	R930004251
0M330370050000A	R930004264	0M330340030000A	R930004252
0M330380020000A	R930004266	0M330340040000A	R930004254
0M330380030000A	R930004267	0M330340050000A	R930004255

Dimensions



34 (1.34)	60 (2.36)	75 (2.95)	20 (0.79)	62 (2.44)	65 (2.56)	155 (6.1)	25 (0.98)	46 (1.81)	83 (3.27)	100 (3.94)	40 (1.58)	110 (4.33)	8.5 (0.34)	190 l/min 50 gpm	280 l/min 74 gpm	G 1	3.3 (7.3)
34 (1.34)	50 (1.97)	88 (3.47)	10 (0.39)	35 (1.38)	44 (1.73)	108 (4.25)	25 (0.98)	23 (0.91)	73 (2.87)	101.5 (4)	40 (1.58)	110 (4.33)	8.5 (0.34)	90 l/min 24 gpm	150 l/min 40 gpm	G 3/4	2 (4.4)
34 (1.34)	40 (1.58)	64 (2.52)	13 (0.51)	31 (1.22)	39 (1.54)	90 (3.54)	25 (0.98)	17.5 (0.69)	60 (2.36)	84 (3.31)	40 (1.58)	90 (3.54)	6.5 (0.26)	55 l/min 15 gpm	90 l/min 24 gpm	G 1/2	1.1 (2.42)
34 (1.34)	40 (1.58)	64 (2.52)	13 (0.51)	31 (1.22)	39 (1.54)	90 (3.54)	25 (0.98)	17.5 (0.69)	60 (2.36)	84 (3.31)	40 (1.58)	90 (3.54)	6.5 (0.26)	30 l/min 8 gpm	55 l/min 15 gpm	G 3/8	1.1 (2.42)
S1	S	L4	L3	L2	L1	L	I	H4	H3	H2	H1	H	F	QR	QE	Y	Weight kg (lbs)