

Solenoid operated valves pilot operated poppet type

2-way normally open

Special cavity, 004

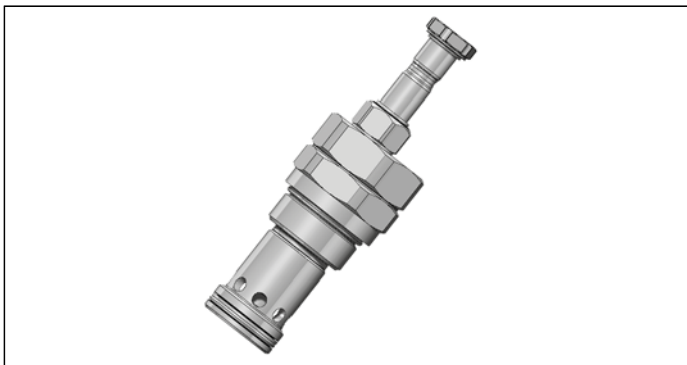
VEI-16-NA_004

OD.15.04.04 - Y - Z

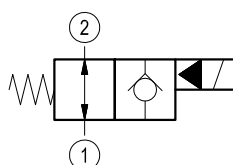
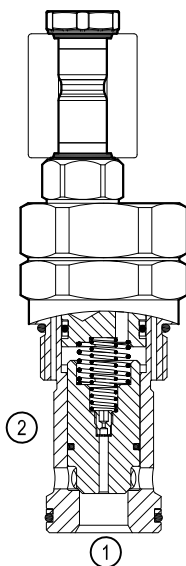
RE 18323-31

Edition: 03.2020

Replaces: 06.2019



PATENT PENDING



Technical data

New VEI-16 family incorporates a new solenoid concept providing excellent performance and enables cartridges to work in severe environment. Cartridges also incorporates advanced design of hydraulic parts providing excellent hydraulic performance.

Technical data

General		
Weight		1.13 kg (2.5 lbs)
Installation orientation		Optional
Storage ambient temperature range		-40 to 100 °C (-40 to 212 °F)
Operating ambient temperature range		-30 to 90 °C (-22 to 194 °F)
Salt spray test to DIN EN ISO 9227:2017-07		500h
Hydraulic		
Max. operating pressure		350 bar (5000 psi)
Max. proof pressure		420 bar (6000 psi)
Rated flow		260 l/min (69 gpm)
Fatigue cycle life		1 million cycles at 350 bar
Max. internal leakage		20 drops/min.
Fluid temperature range		-20 to 80 °C (-4 to 176 °F)
Fluids: Mineral-based or synthetics with lubricating properties at viscosities of 20 to 380 mm ² /s (cSt)		
Installation torque		110 - 130 Nm (81 - 96 ft-lbs)
Recommended degree of fluid contamination		Nominal value max. 25 µm (NAS 8) ISO 4406 19/17/14
Special cavity		004 see 18325-75
Lines bodies and standard assemblies		Please refer to section "Hydraulic integrated circuit" or consult factory
Seal kit	code material no.	RG0004020520100 R930001696
Seal kit coil and standard cap	code material no.	RG02Z0010000100 R930067869
Other technical data		See data sheet 18350-50
Electrical		
Type of voltage		DC voltage
Coil type		D36 see 18325-90
Supply voltage		See data sheet 18325-90
Voltage tolerance against ambient temperature		See characteristic curve
Power consumption		20 W
Duty cycle coil		See characteristic curves %
Type of protection		See data sheet 18325-90

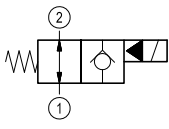
Note: Coils must be ordered separately

Ordering code

OD.15	04	04	Y	Z	0000	*
--------------	-----------	-----------	----------	----------	-------------	----------

Solenoid operated valves
pilot operated poppet type
2-way normally open

monodirectional type



04

Series 0/A to L
unchanged performances and dimensions

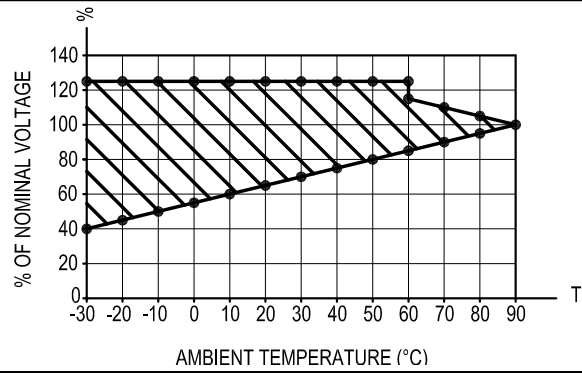
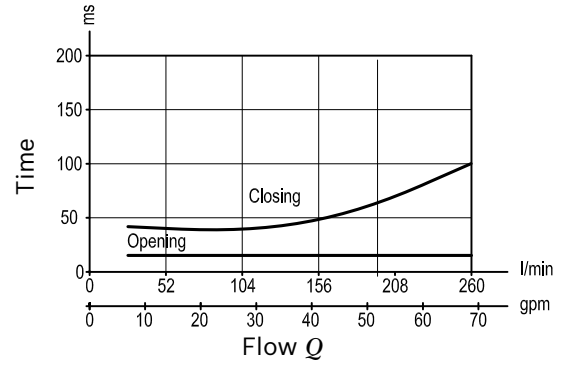
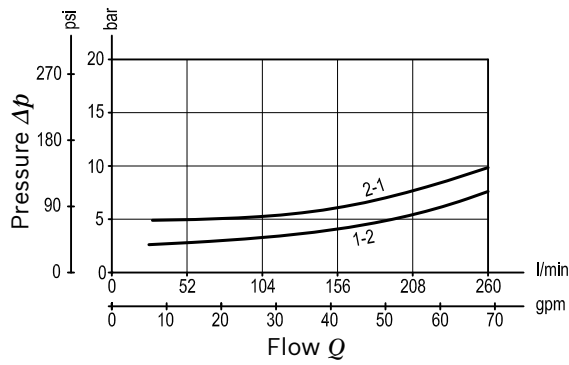
0 = With buna seal
V = With Viton seal

A = Standard
B = Push style manual override
C = Push and twist style manual override

Special cavity: 004

Type	Material number
OD150404A000000	R930064863
OD150404B000000	R930064864
OD150404C000000	R930064865

Type	Material number

Characteristic curves**All Versions - Admissible supply voltage Vs. Ambient temperature at 100% duty cycle****Version 04**

Dimensions**Solenoid operated valves, poppet 2-way
normally closed**