

Solenoid operated valves pilot operated poppet type

2-way normally open

Common cavity, Size 16

VEI-16-16A-NA

OD.15 - X - 75 - Y - Z-00

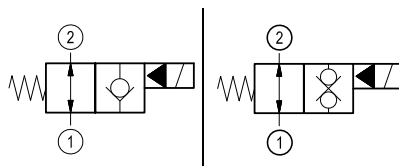
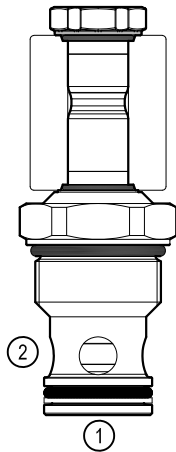
RE 18323-43

Edition: 03.2020

Replace: 06.2019



PATENT PENDING



Technical data

New VEI-16 family incorporates a new solenoid concept providing excellent performance and enables cartridges to work in severe environment. Cartridges also incorporates advanced design of hydraulic parts providing excellent hydraulic performance.

Technical data

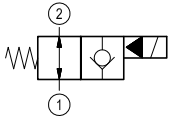
General		
Weight		0.25 kg (0.55 lbs)
Installation orientation		Unrestricted
Storage ambient temperature range		-40 to 100 °C (-40 to 212 °F)
Operating ambient temperature range		-30 to 90 °C (-22 to 194 °F)
Salt spray test to DIN EN ISO 9227:2017-07		500h
Hydraulic		
Max. operating pressure		350 bar (5000 psi)
Flow range		5 - 150 l/min (1 - 40 gpm)
Fatigue cycle life		1 million cycles at 350 bar
Max. internal leakage:		20 drops/min.
Fluid temperature range		-20 to 80 °C (-4 to 176 °F)
Fluids: Mineral-based or synthetics with lubricating properties at viscosities of 20 to 380 mm ² /s (cSt)		
Installation torque		130 - 150 Nm (96 - 111 ft-lbs)
Recommended degree of fluid contamination		Nominal value max. 10 µm (NAS 8) ISO 4406 19/17/14
MTTFD		150 years see RE 18350-51
Common cavity		CA-16A-2N see 18325-70
Seal kit for X=06	code material no.	RG75E201052010 R934004079
Seal kit for X=32	code material no.	RG75E201053010 R934004080
Seal kit coil and standard cap	code material no.	RG01Z0010000100 R930058940
Seal kit coil and protective cap only for Y=B	code material no.	RG03Z0010000100 R930067870
Seal kit coil and protective cap only for Y=C	code material no.	RG04Z0010000100 R930069171
Other technical data		See data sheet 18350-50
Electrical		
Type of voltage		DC voltage
Coil type		D36
Supply voltage		See data sheet 18325-90
Voltage tolerance against ambient temperature		See characteristic curve
Power consumption		20 W
Type of protection		See data sheet 18325-90
Note: Coils must be ordered separately		

Ordering code

OD.15	X	75	Y	Z	0000	*
--------------	----------	-----------	----------	----------	-------------	----------

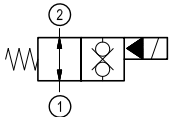
Solenoid operated valves
pilot operated poppet type
2-way normally open

bidirectional type



06

bidirectional type



32

Series 0/A to L
unchanged performances and dimensions

0 = With buna seal

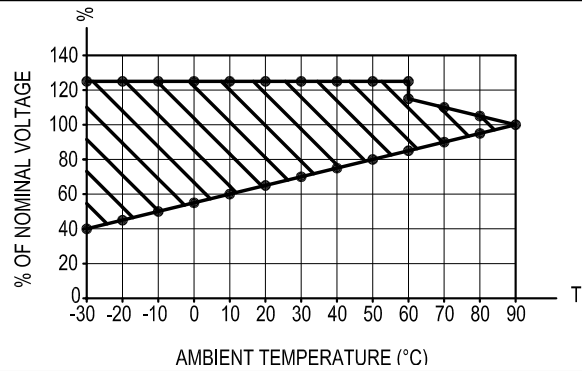
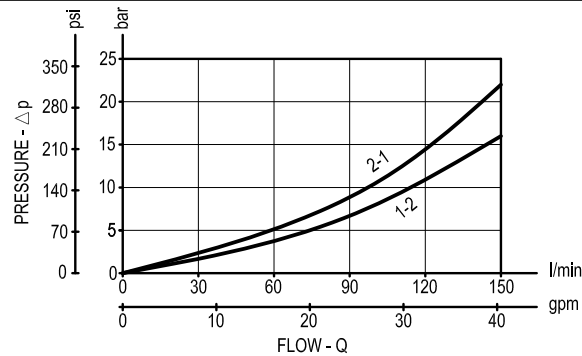
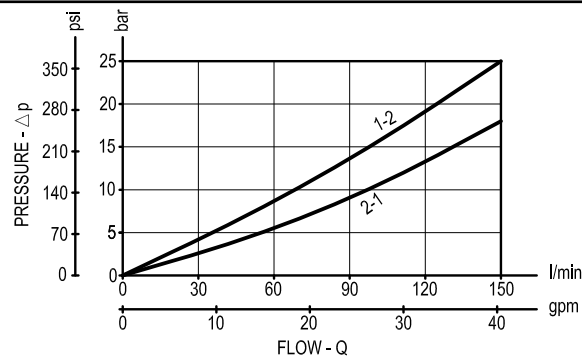
A = Standard
B = Push style manual override
C = Push and twist style manual override

Common cavity: CA-16A-2N

Preferred types

Type	Material number
OD150675A000000	R930069970
OD153275A000000	R930070068
OD153275C000000	R930070835

Type	Material number

Characteristic curves**All Versions - Admissible supply voltage Vs. Ambient temperature at 100% duty cycle****Versions 06****Versions 32**

Dimensions
Solenoid operated valves, poppet 2-way
normally open

