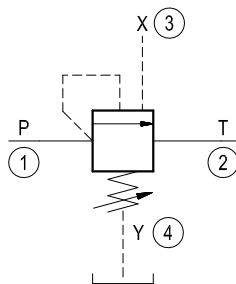
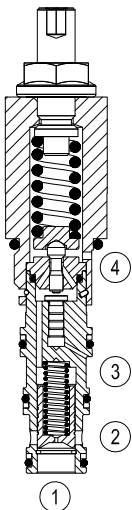


Priority unloading pilot operated

Special cavity, 308

VMSP-78

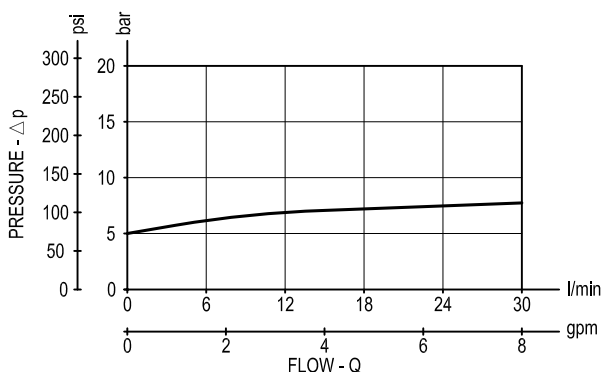
04.75.10 - X - 99 - Z



Description

Flow is blocked from 1 to 2 until pressure increases to meet the selected valve setting, lifting the small, pilot-stage poppet from its seat. This action exhausts oil above the main-stage piston (spool type), allowing it to shift fully and unload flow from 1 through 2 with minimal pressure drop. Similarly, when remote pilot pressure at 3 exceeds the pressure setting, a secondary piston lifts the pilot-stage poppet from its seat, again exhausting fluid from 1 through 2. The spring chamber is drained to tank at 4. Any pressure at 4 will be additive to the valve setting.

Performance



Technical data

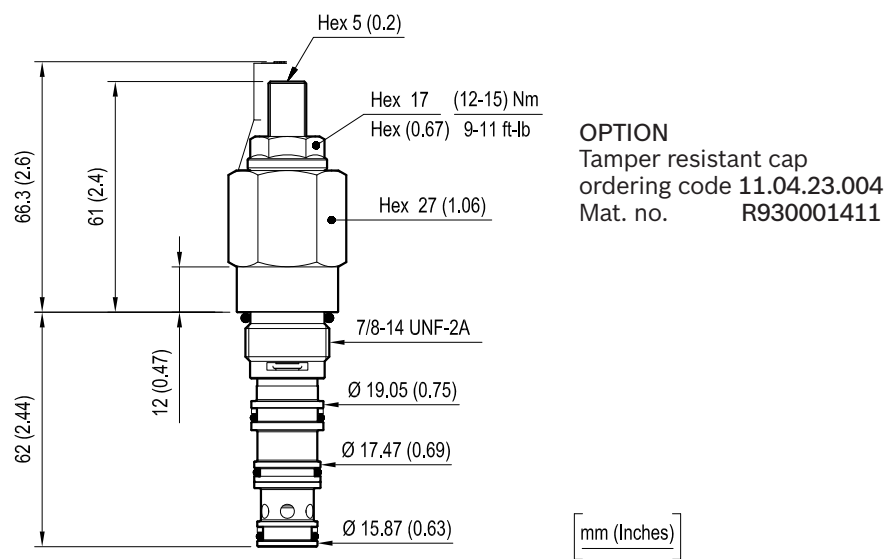
Max. operating pressure port 1-3	bar (psi)	350 (5000)
Max. pressure admitted port 2	bar (psi)	210 (3000)
Flow range	l/min. (gpm)	5-30 (1.3-8)
Max. internal leakage (*)	cm ³ /min. (cu.in./min.)	25 (1.5)
Fluid temperature range	°C (°F)	-30 to 100 (-22 to 212)
Installation torque	Nm (ft-lbs)	41-47 (30-35)
Weight	kg (lbs)	0.28 (0.62)
Special cavity		308 see data sheet RE 18325-75
Seal kit (**)	code material no.	RG0308010520100 R930005801
Fluids		Mineral-based or synthetics with lubricating properties at viscosities of 10 to 500 mm ² /s (cSt)
Filtration		Nominal value max. 10µm (NAS 8) ISO 4406 19/17/14
Installation		No restrictions
Other general technical data		See data sheet RE 18350-50

(*) Measured at 200 bar (2900 psi)

(**) Only external seals for 10 valves

Setting is performed pressurizing "X" port.

Dimensions



OPTION
Tamper resistant cap
ordering code 11.04.23.004
Mat. no. R930001411

Ordering code

04.75.10	X	99	Z	00	*
----------	---	----	---	----	---

Priority unloading, pilot operated

Differential unload / reload
= 03 Re-seat at (85 ± 2.5) % of pressure setting

Special cavity, 308
(old code cartridge style)

Series 0/A to L
unchanged performances and dimensions

Version and options standard

SPRINGS			
	Adj. press. range bar (psi)	Press. increase bar/turn (psi/turn)	Std. setting bar (psi) Q=5 l/min
= 10	7-105 (100-1500)	26 (377)	70 (1000)
= 20	90-210 (1300-3000)	31 (450)	120 (1750)
= 35	150-350 (2200-5000)	105 (1523)	200 (2900)

Note: Special settings available. Contact factory
authorized representative for ordering code

Type	Material number
04751003991000D	R930005772
04751003992000D	R930005779
04751003993500C	R930005780

Type	Material number