

Relief, direct acting guided poppet type Hydac cavity interchange, 06020

VSBN-08F

04.11.49 - X - 20 - Z

RE 18318-18

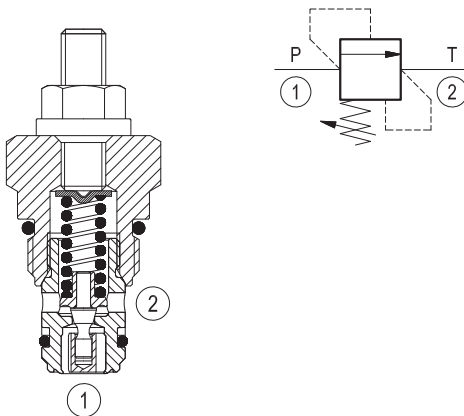
Edition: 01.2019

Replaces: 03.2016



Description

Flow is blocked from 1 to 2 until pressure increases to meet the selected valve setting, lifting the poppet from its seat and allowing relief flow through port 2 to tank. Pressure at port 2 is additive to the relief setting of the valve. The unique Bosch Rexroth Oil Control poppet design provides enhanced stability at all flows and pressures.



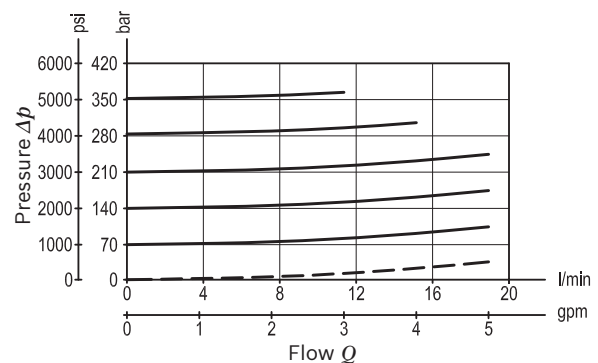
Technical data

Max. operating pressure port 1 (P)	350 bar (5000 psi)
Max. pressure admitted port 2 (T)	140 bar (2000 psi)
Max. flow	20 l/min (5.3 gpm)
Max. internal leakage ¹⁾	15 drops/min.
Fluid temperature range	-30 to 100 °C (-22 to 212 °F)
Installation torque	27 - 30 Nm (20 -22 ft-lbs)
Weight	0.14 kg (0.31 lbs)
Cavity	Hydac 06020
Lines bodies and standard assemblies	Please refer to section "Hydraulic integrated circuit" or consult factory
MTTFd	150 years see data sheet 18350-51
Seal kit ²⁾	Code: RG08F2010520100 material no: R930000994
Fluids	Mineral-based or synthetics with lubricating properties at viscosities of 10 to 500 mm ² /s (cSt)
Recommended degree of fluid contamination	Nominal value max. 10µm (NAS 8) / ISO 4406 20/18/15
Installation position	No restrictions
Other Technical Data	See data sheet 18350-50

1) At 80% of pressure setting

2) Only external seals for 10 valves

Characteristic curve



Ordering code

04.11.49	X	20	Z	00	*
----------	---	----	---	----	---

Relief, direct acting guided
poppet type

Adjustments

03 Leakproof hex. socket screw

20 Hydac cavity interchange, 06020

Series 0/A to L
unchanged performances and dimensions

Version and options standard

SPRINGS			
	Adj. press. range bar (psi)	Pressure increase bar/turn (psi/turn)	Std. setting bar (psi) Q=5 l/min
05	* 10-70 (145-1015)	26 (377)	50 (725)
10	35-140 (500-2000)	50 (725)	100 (1450)
20	105-210 (1500-3000)	79 (1146)	200 (2900)
35	175-350 (2500-5000)	170 (2465)	350 (5000)

* minimum pressure setting intended with Q=5 l/min

Preferred types

Type	Material number
041149032005000	R901126917
041149032010000	R901113602
041149032020000	R901113604
041149032035000	R901113605

Type	Material number

Dimensions

