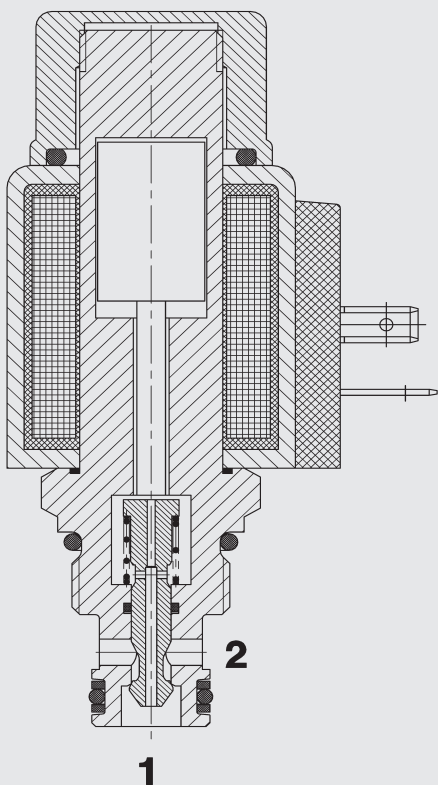


Up to 19 l/min
Up to 250 bar

FUNCTION



2/2 Solenoid Directional Valve Poppet Type, Direct Acting Normally Closed Metric Cartridge – 250 bar WSM06020W-01

FEATURES

- Excellent switching performance by high power HYDAC solenoid
- Hardened and ground control piston to ensure minimal wear and extended service life
- Low pressure drop due to CFD optimized flow path
- Coil seals protect the solenoid system
- External surfaces zinc-plated and corrosion-proof
- Compact design enables space-saving installation in connection housings and control blocks

SPECIFICATIONS

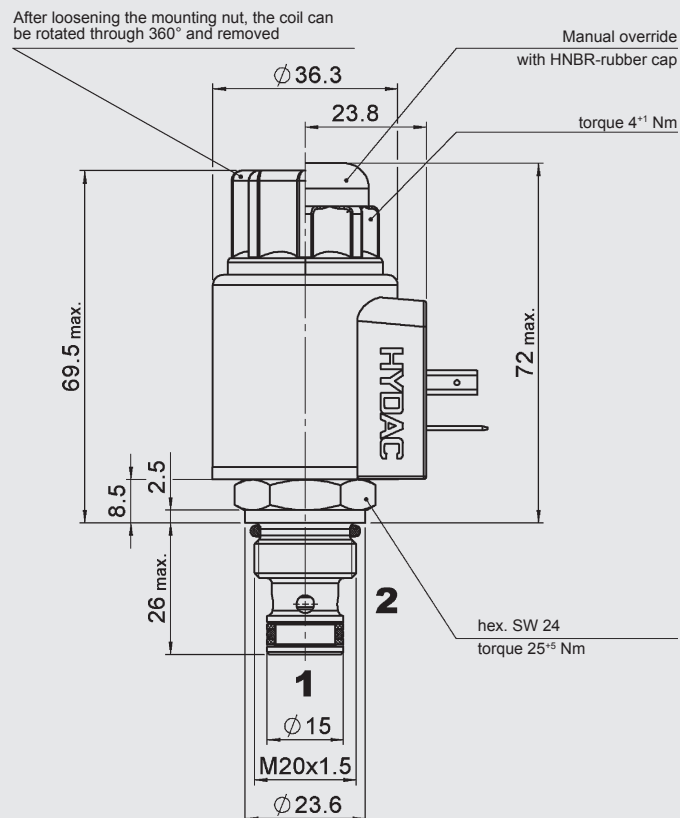
Operating pressure:	max. 250 bar
Nominal flow:	max. 19 l/min
Internal leakage:	Leakage-free (max. 5 drops \approx 0,25 cm ³ /min at 350 bar)
Media operating temperature range:	min. -20 °C to max. +100 °C
Ambient temperature range:	min. -20 °C to max. +60 °C
Operating fluid:	Hydraulic oil to DIN 51524 Part 1 and 2
Viscosity range:	10 to 420 mm ² /s
Filtration:	Class 21/19/16 according to ISO 4406 or cleaner
MTTF _d :	150 years (see "Conditions and instructions for valves" in brochure 5.300)
Installation:	No orientation restrictions
Materials:	Valve body: free-cutting steel Poppet: hardened and ground steel Seals: NBR (standard) FKM (optional, media temperature range -20 °C to +120 °C) Back-up rings: PTFE Coil: steel / polyamide
Cavity:	06020
Weight:	Valve complete 0.33 kg Coil only 0.19 kg

Electrical data:

Type of voltage:	DC solenoid, AC voltage is rectified using a bridge rectifier built into the coil
Nominal voltage:	1.5 A at 12 V DC 0.8 A at 24 V DC
Voltage tolerance:	\pm 15% of the nominal voltage
Coil duty rating:	Continuous up to max. 115% of the nominal voltage at 60 °C ambient temperature
Response time:	Energized: approx. 35 ms De-energized: approx. 50 ms
Coil type:	Coil...-40-1836

When the solenoid coil is de-energized, the valve blocks flow in both directions. When energized the valve allows flow in both directions.

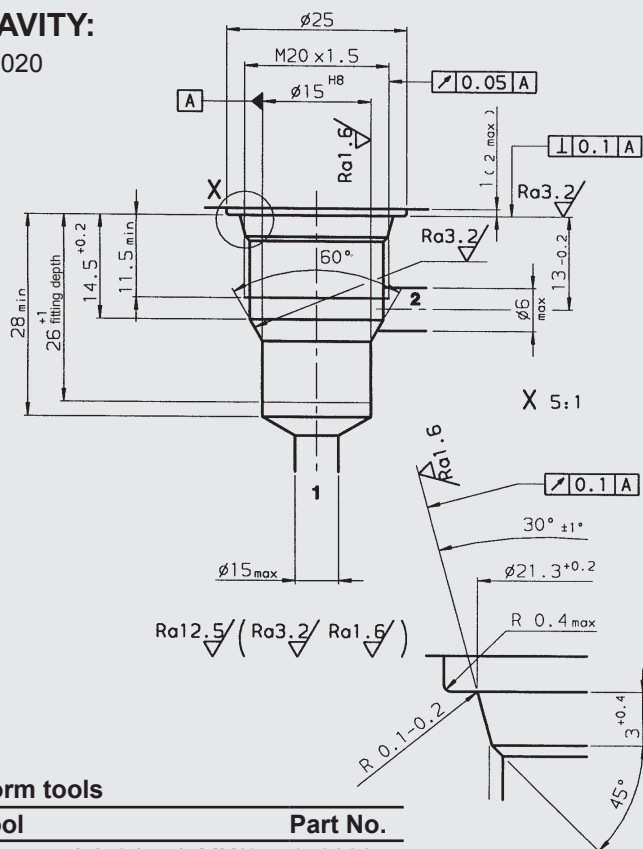
DIMENSIONS



millimeter
subject to technical modifications

CAVITY:

06020



millimeter
subject to technical modifications

MODEL CODE

WSM06020W - 01 M - C - N - 24 DG

Basic model _____
Directional poppet valve, metric

Type _____
01 = standard

Manual override _____
 No details = without manual override
 M = manual override

Body and ports*—
C = cartridge only

Seals _____
N = NBR (standard)
V = FKM

Nominal voltage for actuating solenoid

DC voltages:

12 = 12 V DC
24 = 24 V DC

AC voltages (bridge rectifier built into the coil)

$$115 = 115 \text{ V AC}$$
$$230 = 230 \text{ V AC}$$

Other voltages on request

Coil connectors (type 40-1836)

DC: DG = DIN connector to EN175301-803

DT = AMP Junior Timer, 2-pole, radial

DK = Kostal threaded connection M27

DL = 2 flying leads 475 mm long, 0.75 mm

DN = Deutsch connector, axial

AC: AG = DIN connector to EN175301-803

Other connectors on request

Standard models

Model code	Part No.
WSM06020W-01-C-N-24DG	3055971
WSM06020W-01-C-N-230AG	3055969

***Standard in-line bodies**

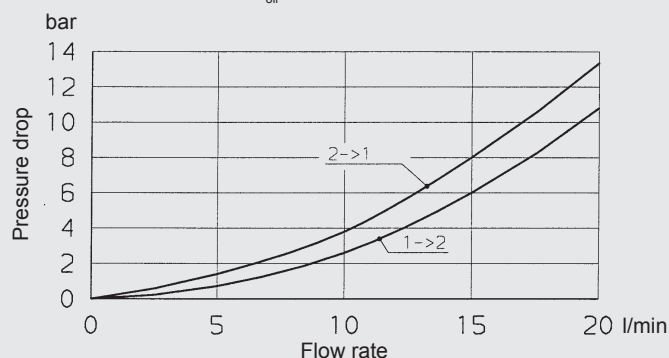
Code	Part No.	Material	Ports	Pressure
R06020-01X-01	275266	Steel, zinc-plated	G 3/8	420 bar
Other housings on request				

Seal kits

Code	Material	Part No.
SEAL KIT 06020	NBR	3119017
SEAL KIT 06020	FKM	3262477

PERFORMANCE

Measured at $v = 34 \text{ mm}^2/\text{s}$, $T_{\text{oil}} = 46 \text{ }^\circ\text{C}$



Form tools

Tool	Part No.
Countersink (shank MK3)	170033
Reamer (shank MK2)	1000768

millimeter
subject to technical modifications