

Solenoid operated valves pilot operated poppet type

2-way normally closed

Special cavity, 019-E

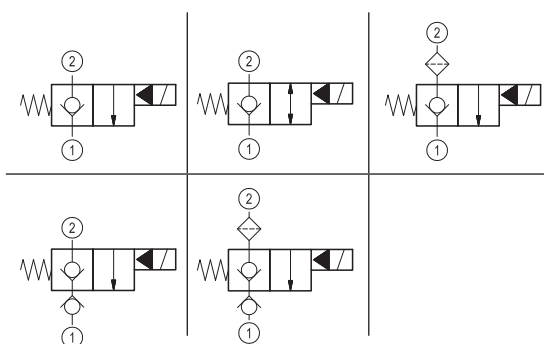
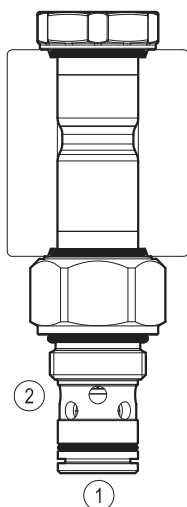
RE 18323-27

Edition: 03.2017

Replaces: 02.2017

VEI-16-08S-NC

OD.15 - X - 19 - Y - Z

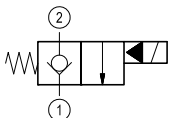
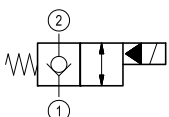
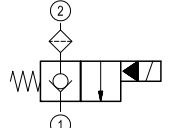
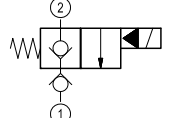
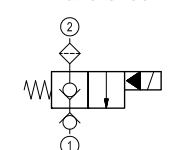
**PATENT PENDING****Technical data**

New VEI-16 family incorporates a new solenoid concept providing excellent performance and enables cartridges to work in severe environment. Cartridges also incorporate advanced design of hydraulic parts providing excellent hydraulic performance.

Technical data

| General | |
|--|---|
| Weight | 0.15 kg (0.33 lbs) |
| Installation orientation | Unrestricted |
| Ambient temperature range | -30 to 90 °C (-22 to 194 °F) |
| Hydraulic | |
| Max. operating pressure | 350 bar (5000 psi) |
| Flow range | 0.5 - 40 l/min (0.1 - 11 gpm) |
| Fatigue cycle life | 2 million cycles at 350 bar 150000 cycles at 420 bar |
| Max. internal leakage | 5 drops/min. |
| Switching time | Opening ≤ 50 ms Closing ≤ 100 ms |
| Fluid temperature range | -20 to 80 °C (-4 to 176 °F) |
| Fluids: Mineral-based or synthetics with lubricating properties at viscosities of 20 to 380 mm ² /s (cSt) | |
| Installation torque | 39 - 51 Nm (29 - 38 ft-lbs) |
| Recommended degree of fluid contamination | Nominal value max. 10 µm (NAS 8) ISO 4406 19/17/14 |
| MTTFd | 150 years see RE 18350-51 |
| Special cavity | 019-E see 18325-75 |
| Seal kit for X=01,05,07 | code RG19E201052010 material no. R934003560 |
| Seal kit for X=11,13 | code RG19E201053010 material no. R934003561 |
| Seal kit coil | code RG01Z0010000100 material no. R930058940 |
| Other technical data | See data sheet 18350-50 |
| Electrical | |
| Type of voltage | DC voltage |
| Coil type | D36 |
| Supply voltage | See data sheet 18325-90 |
| Voltage tolerance against ambient temperature | See characteristic curve |
| Power consumption | 20 W |
| Type of protection | See data sheet 18325-90 |
| Note: Coils must be ordered separately | |

Ordering code

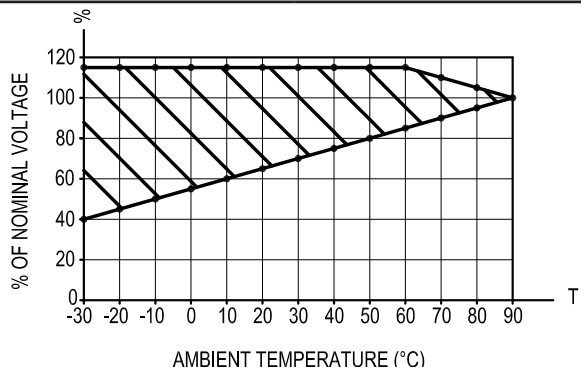
| OD.15 | X | 19 | Y | Z | 0000 | * |
|--|----|----|---|---|------|--|
| Solenoid operated valves pilot operated poppet type 2-way normally closed | | | | | | Series O/A to L unchanged performances and dimensions |
| monodirectional type  | 01 | | | | | 0 = With buna seal V = With Viton seal P = With buna seal and protective cap for override version D T = With Viton seal and protective cap for override version D |
| bidirectional type  | 05 | | | | | A = Standard D = Knob style manual override E = Pull style manual override F = Hand operated pull style manual override |
| monodirectional type with filter  | 07 | | | | | |
| monodirectional type with check  | 11 | | | | | Special cavity: 019-E |
| monodirectional type with filter and check  | 13 | | | | | |

| Type | Material number |
|-----------------|-----------------|
| OD150519A000000 | R930058433 |
| OD150519DP00000 | R930058531 |
| OD150719A000000 | R930058431 |
| OD150719DP00000 | R930058530 |
| OD151119A000000 | R930060459 |
| OD151319A000000 | R930058333 |

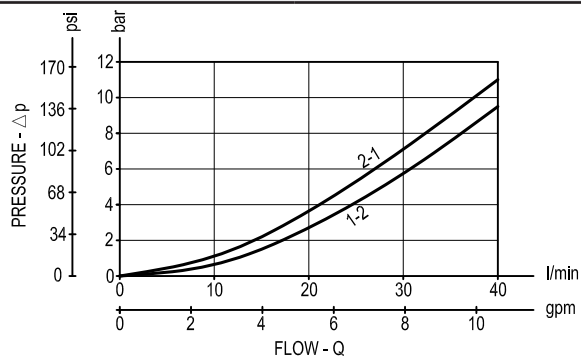
| Type | Material number |
|-----------------|-----------------|
| OD151319D000000 | R930058343 |
| OD150119E000000 | R930060857 |
| OD150519E000000 | R930060865 |
| OD150719E000000 | R930060872 |
| OD151119E000000 | R930060882 |
| OD151319E000000 | R930060890 |

Characteristic curves

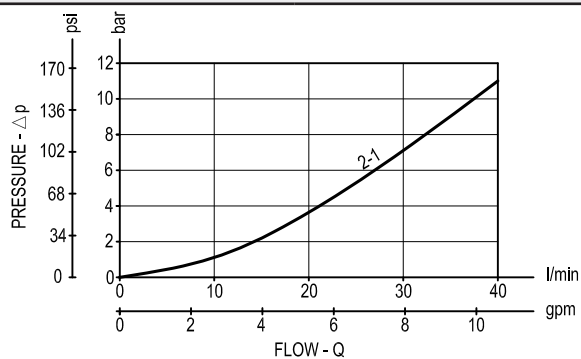
All Versions - Admissible supply voltage Vs. Ambient temperature at 100% duty cycle



Version 01-05-07



Version 11-13



Dimensions

Solenoid operated valves, poppet 2-way
normally closed

