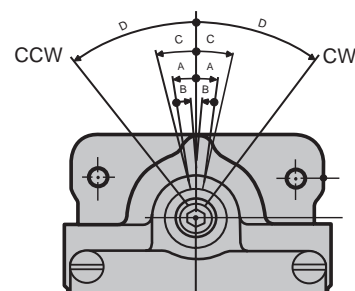


运行数据



With mechanical travel of less than $6\frac{1}{2}^\circ$ required to trip, this heavy duty limit switch operates with one normally open and one normally closed circuit.

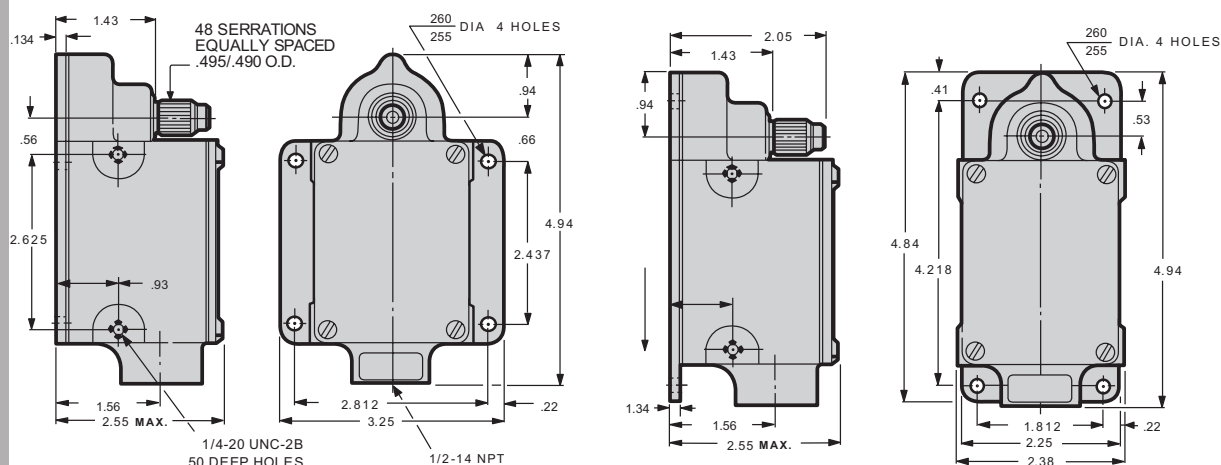
Can be furnished with standard and style 1 mountings.



旋转方向

- A. Pre-Travel $6^\circ 30'$
- B. Differential Travel 4°
- C. Recommended Travel 7°
- D. Total Travel 35°
- E. Max. Torque During Pre-Travel 24 Lb-In
- F. Max. Torque at Total Travel 45 Lb-In
- G. Weight: Approx. 2.3 Lbs.

尺寸和安装



宽安装板

长安装板

ORDERING INFO

ORDERING NUMBERS

TYPE MOUNTING	ROTATION CW	ROTATION CCW	MAINTAINED (WITHOUT RETURN SPRING)
LONG MOUNTING	EA060-11100	EA060-12100	EA060-13100
WIDE MOUNTING	EA060-21100	EA060-22100	EA060-23100

配置

FOR
CW
SWITCH



B ● | ● D B ● | ● D
A ● | ● C A ● | ● C
INITIAL CW

FOR
CCW
SWITCH



B ● | ● D B ● | ● D
A ● | ● C A ● | ● C
INITIAL CCW

产品规格

Heavy Duty, Machine Tool Type, Single Pole, Double Throw, Quick Make, Quick Break, Butt Type, NEMA Form "Z" Contacts.

Enclosure is Water, Oil and Dust Tight. Meets (NEMA) 1, 4, & 13 Requirements.

Torque Necessary for Operation of Switch 24 in. lb. (Without Return Spring, Item 25, 12 in. lb.)

Ambient Temperature: -20°C to + 90°C

For Hazardous Location Requirements, see EA880 Series.

Continuous Current Rating - Amperes

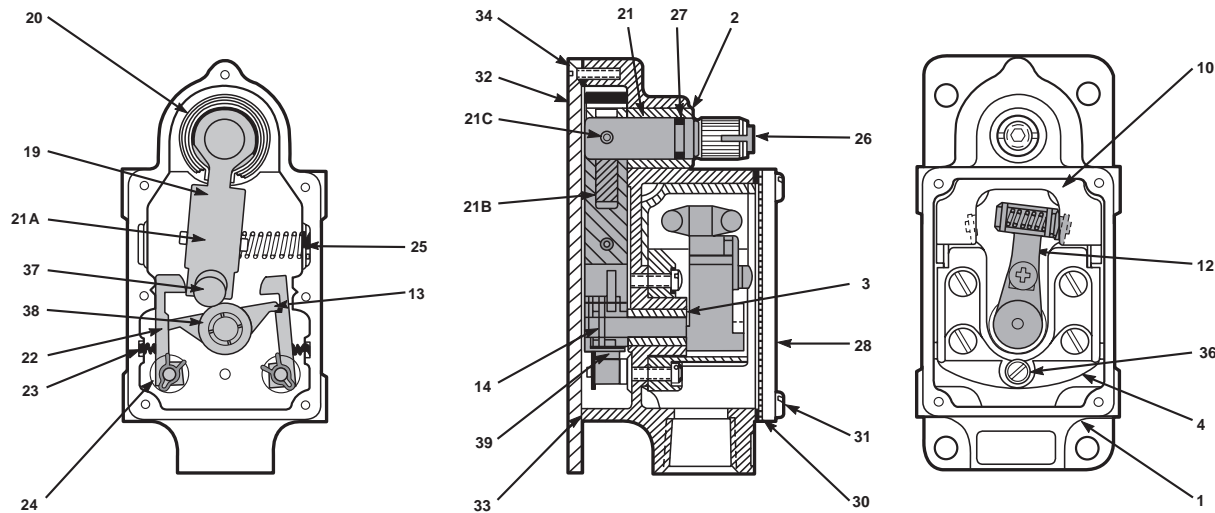
Volts	AC	DC
125	20	5
250	15	1.5
480	10	
600	5	

75-100% Power Factor

External Lever is Adjustable by 7°30' Increments thru 167°

FORM Z - A Form Z contact arrangement is one which has single-pole double-throw contacts with four terminals - two for normally open and two for normally closed. The function of this arrangement is to open one circuit and close the other. (NEMA Standard 11-12-1970).

零件清单



编号	描述	数量	编号	描述	数量
1	部件总成	1	24	锁扣环	2
2	衬套	1	25	回弹弹簧	1
3	衬套	1	26	管塞	1
4	连接块	1	27	“O”环	1
10	终端绝缘子	1	28	顶盖	1
12	连接LEVE总成, 摇臂总成.	1	30	顶盖垫片	1
13	锥形销	1	31	顶盖螺钉	4
14	杠杆轴总成. (包括项目20, 21、21a、21b和21c)	1	32	底盖	1
19		1	33	底盖垫片	1
20	扭力弹簧	1	34	底盖螺钉	7
21	杠杆轴	1	36	螺丝钉	2
21A	杠杆	1	37	浮动杠杆	1
21B	弹簧杆	1	38	垫圈	1
21C	辊销	1	39	扭力弹簧	1
22	门闩	2			
23	门簧	2			