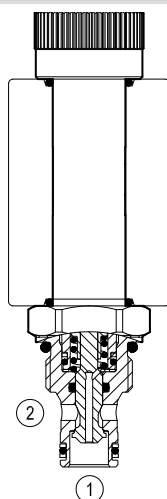


Solenoid operated valves direct acting poppet 2-way double lock normally closed

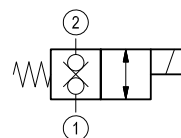
Common cavity, Size 08

VEDT-08A-A-16-NC

OD.11.31.18 - 6Y - 00



Version 31



General

Weight	kg (lbs)	0.22 (0.48)
Installation orientation		Optional
Ambient temperature range	°C (°F)	-30 to 60 (-22 to 140)

Hydraulic

Max. operating pressure	bar (psi)	250 (3600)
Max. flow	l/min. (gpm)	25 (7)
Max. internal leakage	drops/min.	20
Fluid temperature range	°C (°F)	-20 to 80 (-4 to 176)
Response time	ms.	40-60 at nominal flow (oil at 46 cSt)
Fluids		Mineral-based or synthetics with lubricating properties at viscosities of 20 to 380 mm ² /s (cSt)
Installation torque	Nm (ft-lbs)	34-41 (25-30)
Recommended degree of fluid contamination		Nominal value max. 10µm (NAS 8) ISO 4406 19/17/14
Cavity		CA-08A-2N see RE 18325-70
Lines bodies and standard assemblies		Please refer to section "Hydraulic integrated circuit" or consult factory
Seal kit	code material no.	RG08A2010530100 R901101544
Seal kit coil	code material no.	RG16A1PMVQ0010 R934003962
Other technical data		See data sheet RE 18350-50

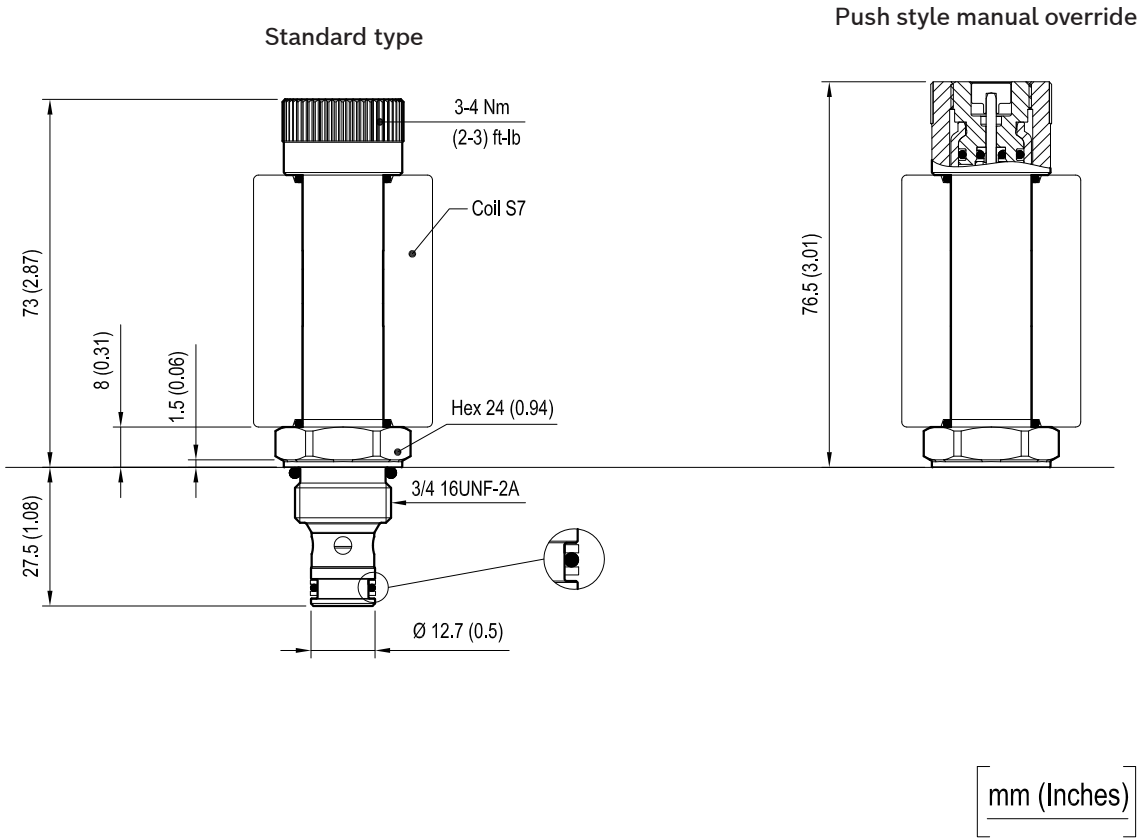
Electrical

Type of voltage		DC voltage
Coil type		S7
Supply voltage		See data sheet RE 18325-90
Power consumption	W	30
Duty cycle coil	%	See performance graphs
Type of protection		See data sheet RE 18325-90
Nominal voltage coil 30W		-10% +10%

Note: Coils must be ordered separately.

Dimensions

Solenoid operated valves poppet 2-way double lock normally closed



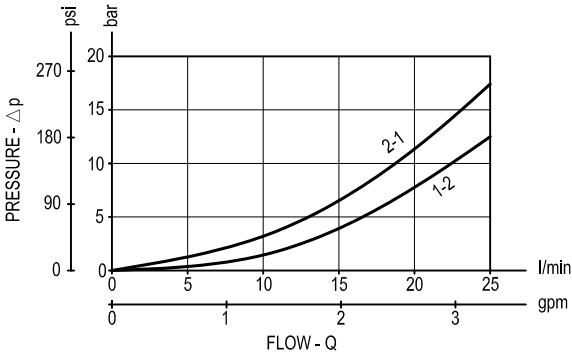
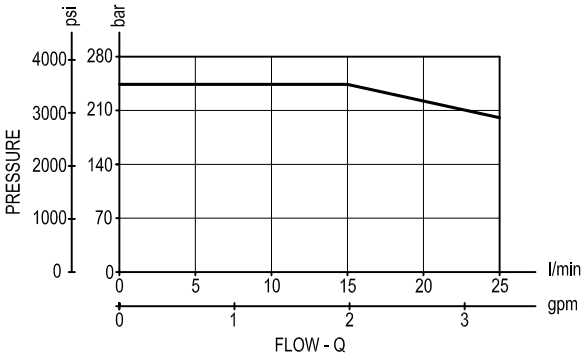
Performance graphs

Performance limits

(Hot coil at nominal voltage)

version 31

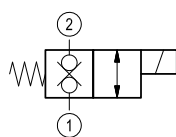
Characteristic curves



Ordering code

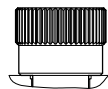
OD.11	*	18	*	00
-------	---	----	---	----

Solenoid operated valves
poppet 2-way double lock
normally closed


$$= 31$$

Common cavity: CA-08A-2N

standard type

$$6A =$$


Push style manual override

$$6B =$$


Type	Material number
OD1131186A0000	R934003624
OD1131186B0000	R934003625

[illegible]