

Pilot operated check, dual

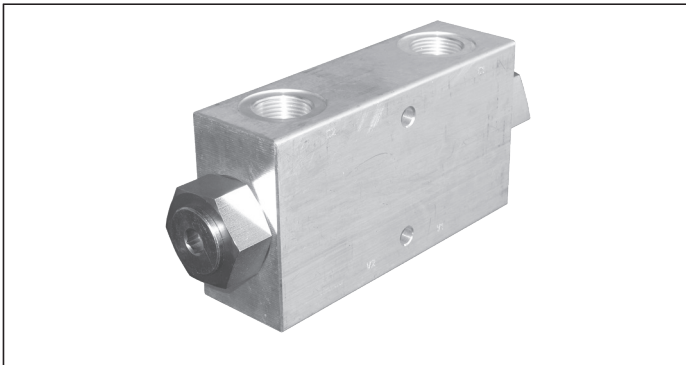
VSO-DE

05.53.01 - X - 04 - Z

RE 18307-18

Edition: 09.2019

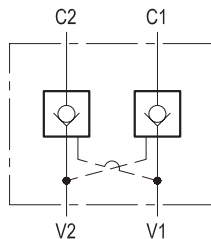
Replaces: 03.2016



Description

Flow is allowed to pass in one direction (V1 to C1 or V2 to C2), then the valve remains closed (checked) in both reverse directions (C1 to V1 or C2 to V2) in order to hold and lock in position the cylinder or other actuators; reverse flow is possible only when sufficient pilot pressure is applied at V2 or V1, which act as cross connected pilot ports, and the pilot piston lifts the poppet from its seat overcoming cylinder port pressure.

In case of valve application in redundancy systems it is especially recommended to use version with sealed pilot piston.

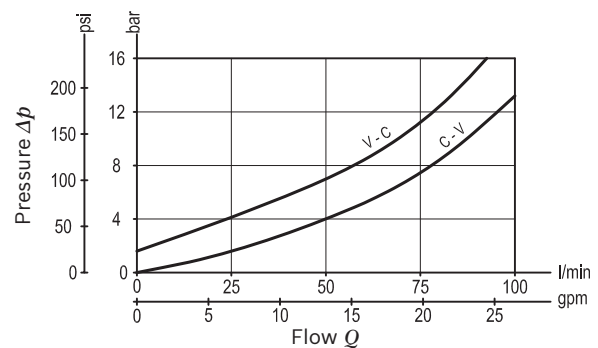


Technical data

Operating pressure	up to 210 bar (3000 psi)
Max. flow	100 l/min. (26 gpm)
Pilot ratio	4 : 1
Weight	2.6 kg (5.7 lbs)
Manifold material	Aluminium
Note: aluminium bodies are often strong enough for operating pressures exceeding 210 bar (3000 psi), depending from the fatigue life expected in the specific application. If in doubt, consult our Service Network.	
Fluid	Mineral oil (HL, HLP) according DIN 51524
Fluid temperature range	-30 °C to 100 (-22 to 212 °F)
Viscosity range	10 to 500 mm ² /s (cSt)
Recommended degree of fluid contamination	Class 19/17/14 according to ISO 4406
Other technical data	see data sheet 18350-50
The version with O-Ring and heavier spring is generally recommended.	

Note: for applications outside these parameters, please consult us.

Characteristic curve



Ordering code

05.53.01		X	04	Z
Pilot operated check, dual				SPRINGS
O-Ring on pilot piston				Cracking pressure bar (psi)
00 No O-Ring		00	only for X=00	1.5 (22)
10 With O-Ring		01	only for X=00 and X=10	8 (116)
Port sizes	V1 - V2	C1 - C2		
04	G 3/4	G 3/4		

Preferred types

Type	Material number
055301000400000	R930002396
055301000401000	R930002397

Type	Material number
055301100401000	R930002403

Dimensions

