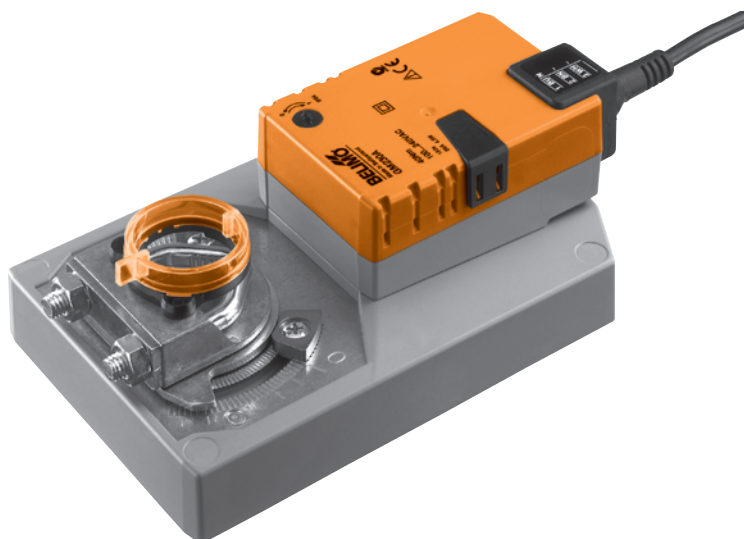


Damper actuator for operating air control dampers in ventilation and air-conditioning systems for building services installations

- For air control dampers up to approx. 8 m²
- Torque 40 Nm
- Nominal voltage AC 100 ... 240 V
- Control: Open-close (not made for 3-point applications)



Technical data

| | | |
|----------------------------|---------------------------|---|
| Electrical data | Nominal voltage | AC 100 ... 240 V, 50/60 Hz |
| | Nominal voltage range | AC 85 ... 265 V |
| | Power consumption | In operation 5 W @ nominal torque At rest 2 W For wire sizing 9 VA |
| | Connection | Cable 1 m, 3 x 0.75 mm ² |
| Functional data | Torque (nominal torque) | Min. 40 Nm @ nominal voltage |
| | Direction of rotation | Reversible with switch 0 ↺ or 1 ↻ |
| | Manual override | Gearing latch disengaged with pushbutton, detentable |
| | Angle of rotation | Max. 95°↔, limited on both sides by means of adjustable, mechanical end stops |
| | Running time | 150 s / 90°↔ |
| | Sound power level | Max. 45 dB (A) |
| | Position indication | Mechanical, pluggable |
| | | |
| Safety | Protection class | II Totally insulated <input type="checkbox"/> |
| | Degree of protection | IP54 in any mounting position |
| | EMC | CE according to 89/336/EEC |
| | Low voltage directive | CE according to 73/23/EEC |
| | Mode of operation | Type 1 (EN 60730-1) |
| | Rated impulse voltage | 2.5 kV (EN 60730-1) |
| | Control pollution degree | 3 (EN 60730-1) |
| | Ambient temperature range | -30 ... +50 °C |
| | Non-operating temperature | -40 ... +80 °C |
| | Ambient humidity range | 95% r.H., non-condensating (EN 60730-1) |
| Dimensions / Weight | Maintenance | Maintenance-free |
| | Dimensions | See «Dimensions» on page 2 |
| | Weight | Approx. 1'700 g |

Safety notes



- The damper actuator is not allowed to be used outside the specified field of application, especially in aircraft or any other form of air transport.
- Caution: Power supply voltage !
- Assembly must be carried out by trained personnel. Any legal regulations or regulations issued by authorities must be observed during assembly.
- The device may only be opened at the manufacturer's site. It does not contain any parts that can be replaced or repaired by the user.
- The cable must not be removed from the device.
- When calculating the required torque, the specifications supplied by the damper manufacturers (cross section, design, installation site), and the air flow conditions must be observed.
- The device contains electrical and electronic components and is not allowed to be disposed of as household refuse. All locally valid regulations and requirements must be observed.

Product features

| | |
|-------------------------------------|--|
| Simple direct mounting | Simple direct mounting on the damper spindle with a universal spindle clamp, supplied with an anti-rotation strap to prevent the actuator from rotating. |
| Manual override | Manual operation is possible with the pushbutton (the gearing latch remains disengaged as long as the pushbutton is pressed or detented). |
| Adjustable angle of rotation | Adjustable angle of rotation with mechanical end stops. |
| High functional reliability | The actuator is overload-proof, requires no limit switches and automatically stops when the end stop is reached. |

Accessories

| | Description | Data sheet |
|-------------------------------|--|----------------|
| Electrical accessories | Auxiliary switch, type S..A.. | T2 - S..A.. |
| | Feedback potentiometer, type P..A.. | T2 - P..A.. |
| Mechanical accessories | Various accessories (Damper and actuator crank arms, anti-rotation strap etc.) | T2 - Z-GM..A.. |

Electrical installation

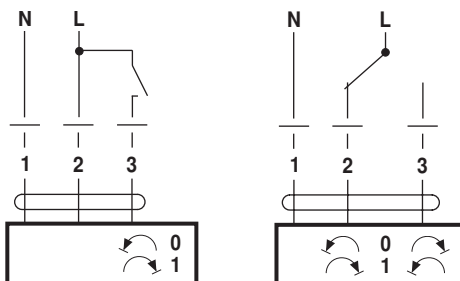
Wiring diagrams

Notes

- Caution: Power supply voltage !
- Other actuators can be connected in parallel. Please note the performance data.



Direction of rotation








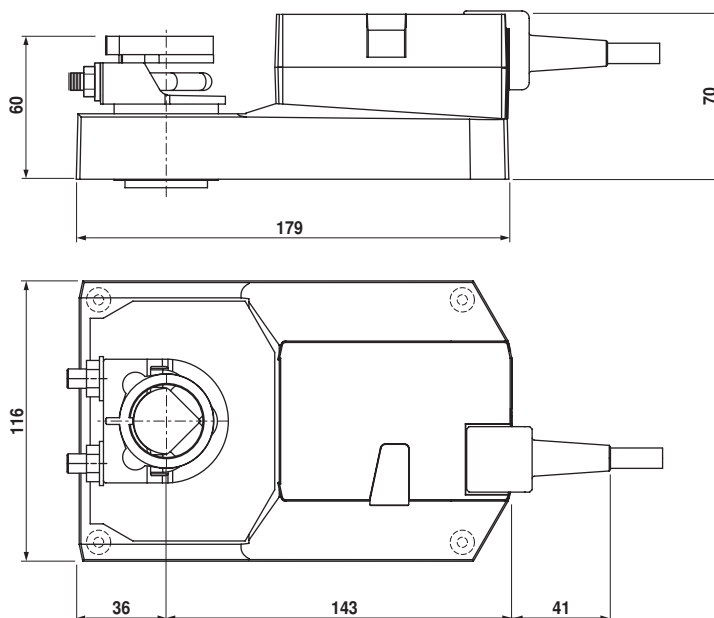
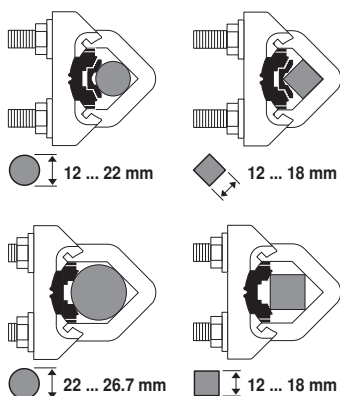
Cable colours:

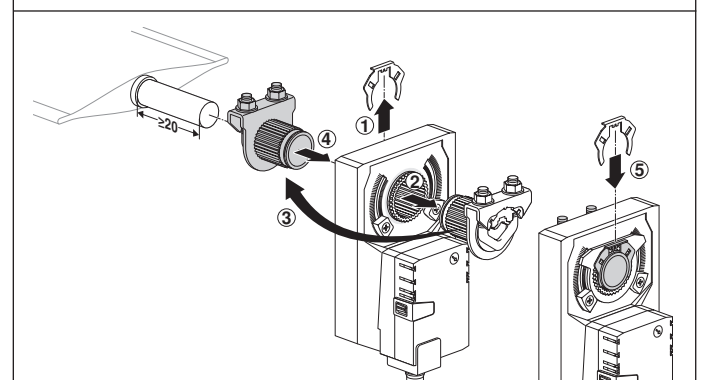
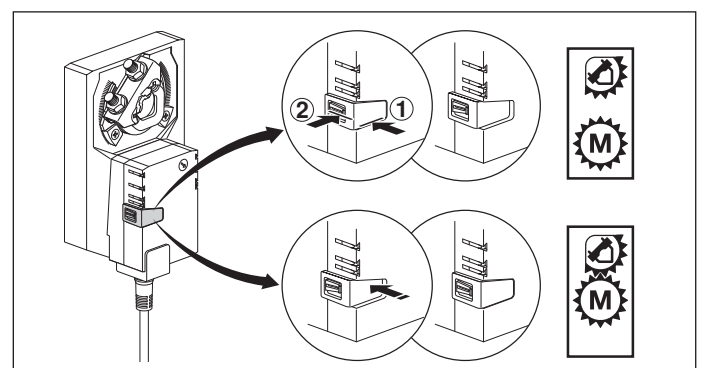
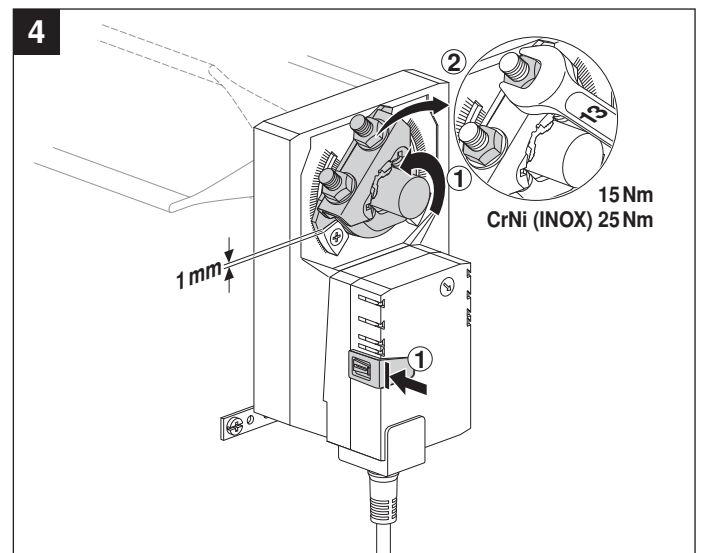
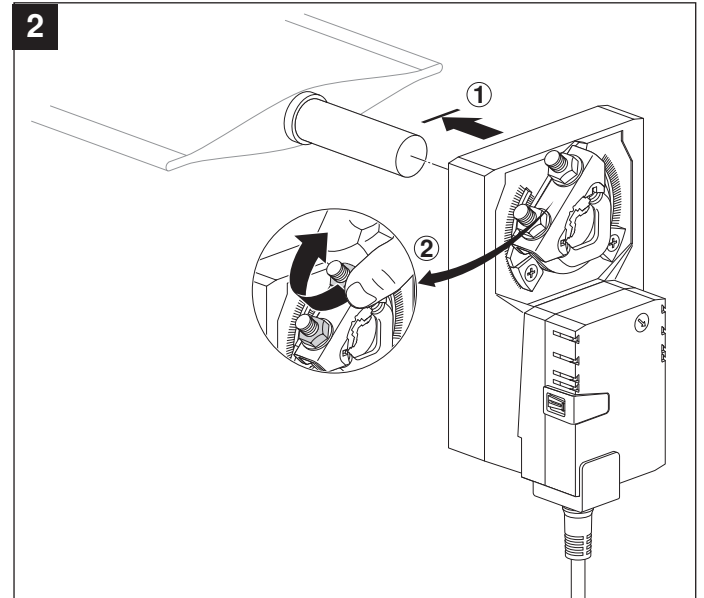
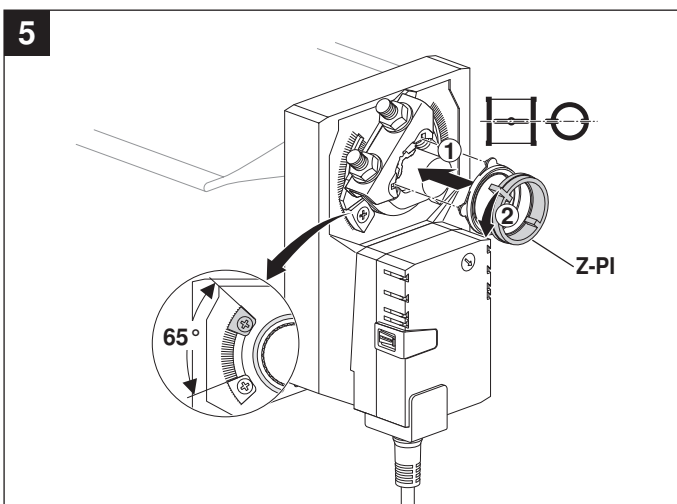
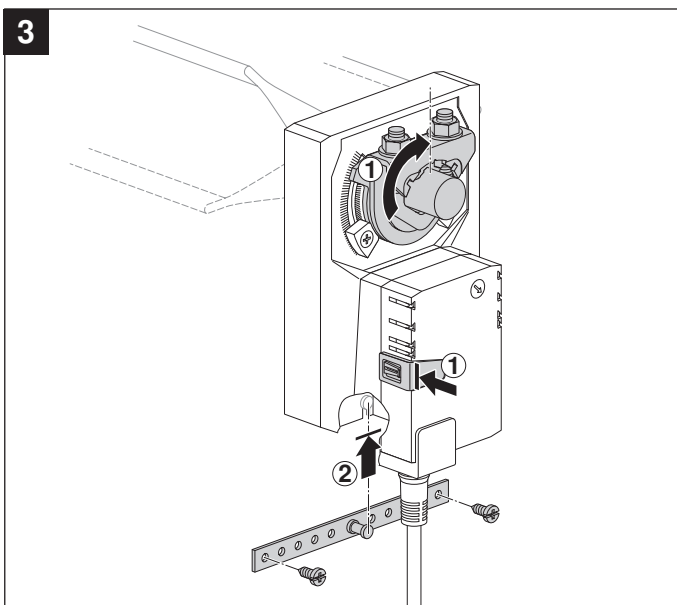
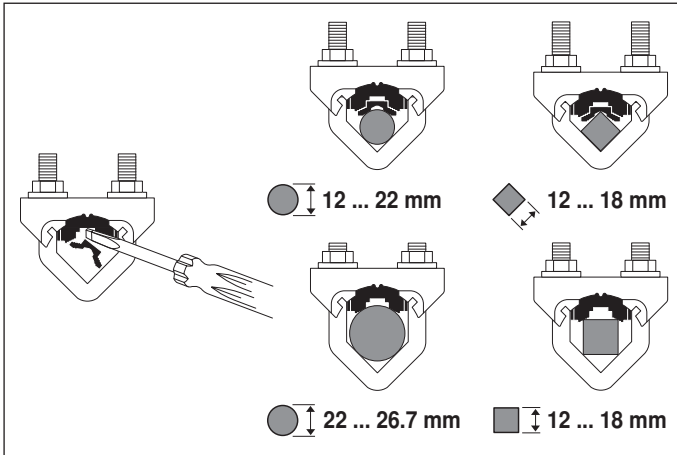
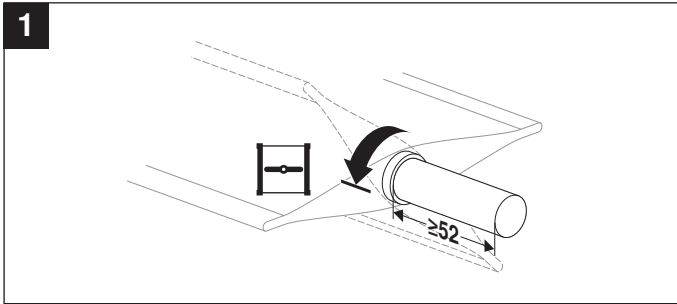
- 1 = blue
- 2 = brown
- 3 = white

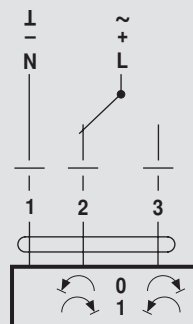
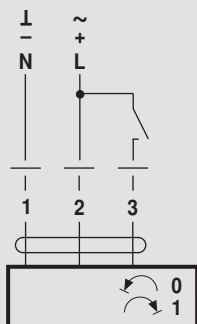
Dimensions [mm]

Dimensional drawings

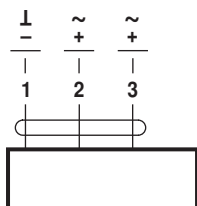
| Damper spindle | Length |  |  |  |
|---|--------|---|---|---|
|  | >52 | 12 ... 26.7 | >12 | <25.2 |
|  | >20 | 12 ... 26.7 | >12 | <25.2 |



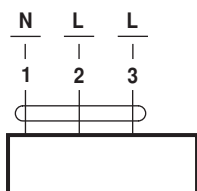





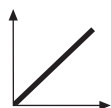
AC 24 V / DC 24 V



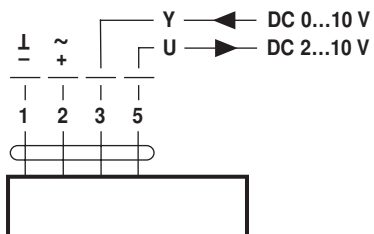
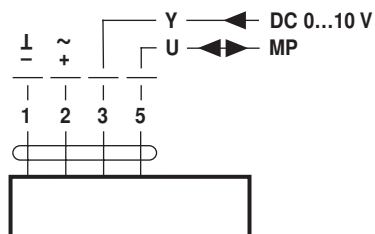
GM24A..

AC 100 ... 240 V 

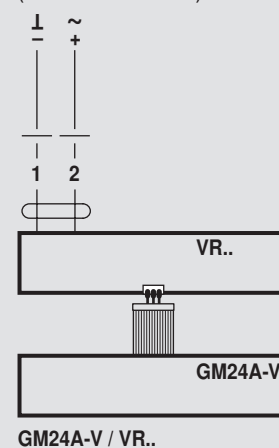
GM230A..



AC 24 V / DC 24 V

GM24A-SR..
GM24A-MF..

GM24A-MP..

AC 24 V / DC 24 V
(GM24A-V / VR..)

GM24A-V / VR..