

# Solenoid operated valves pilot operated poppet type

## 2-way normally closed proximity sensor

### Common cavity, Size 08

**RE 18325-03**

Edition: 01.2016

Replaces: 10.2013

VESP-08A-12A/00-2A05-N7

OD.15.05.18.41 - Y - Z

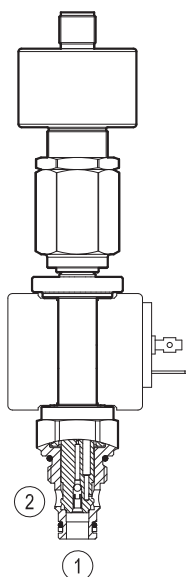
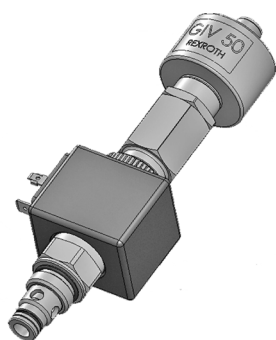
**Technical data**

General		
Weight		0.13 kg (0.29 lbs)
Installation orientation		Optional
Ambient temperature range		-25 to 60 °C (-13 to 140 °F)
Hydraulic		
Max. operating pressure		350 bar (5000 psi)
Flow range		1 - 40 l/min (0.3 - 11 gpm)
Max. internal leakage		15 drops/min.
Fluid temperature range		-20 to 80 °C (-4 to 176 °F)
Fluids: Mineral-based or synthetics with lubricating properties at viscosities of 15 to 380 mm²/s (cSt)		
Installation torque		30 - 35 Nm (22 - 26 ft-lbs)
Recommended degree of fluid contamination		Nominal value max. 10 µm (NAS 8) ISO 4406 19/17/14
MTTFd		150 years see RE 18350-51
Common cavity		CA-08A-2N see 18325-70
Lines bodies and standard assemblies		Please refer to section “Hydraulic integrated circuit” or consult factory
Seal kit	code	RG08A2010520100
	material no.	R901101437
Other technical data		See data sheet 18350-50

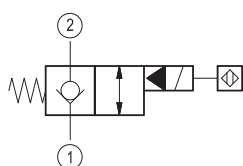
Electrical	
Type of voltage	DC voltage
Coil type	S8-356 see 18325-90
Supply voltage	See data sheet 18325-90
Nominal voltage	± 10%
Power consumption	20 W
Duty cycle coil	100 % see 18325-90
Type of protection	See data sheet 18325-90

Please consider that a proper function of the valve is guaranteed only if the position of the monitor is not modified; each cartridge is provided of a torque confirmation mark, intended as anti-tampering device.

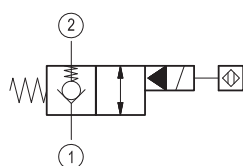
Sensor is protected against short circuit polarity inversion.



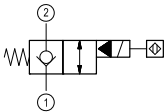
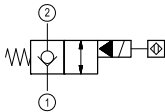
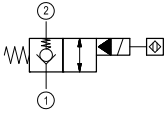
## ▼ Version 05 / 06



## ▼ Version 85



**Ordering code**

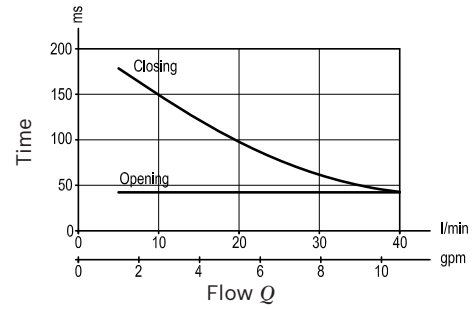
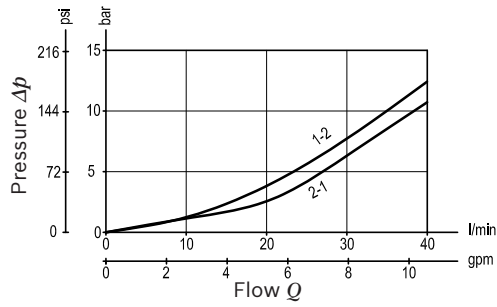
<div> <div>OD.15</div> <div>05</div> <div>18</div> <div>41</div> <div>Y</div> <div>Z</div> </div>					
<div> <div>Solenoid operated valves</div> <div>pilot operated poppet type</div> <div>2-way normally closed proximity sensor</div> </div>				<div> <div>OC 24 V DC</div> <div>Note: please consult factory for different voltages.</div> </div>	
				<div> <div>DIN 43650</div> <div>05</div>  </div>	<div> <div>AMP JUNIOR</div> <div>06</div>  </div>
<div>Common cavity: CA-08A-2N</div>				<div> <div>85</div>  </div>	

Type	Material number
OD1505184105OC	R934004319
OD1505184185OC	R934004320
OD1505184106OC	R934004812

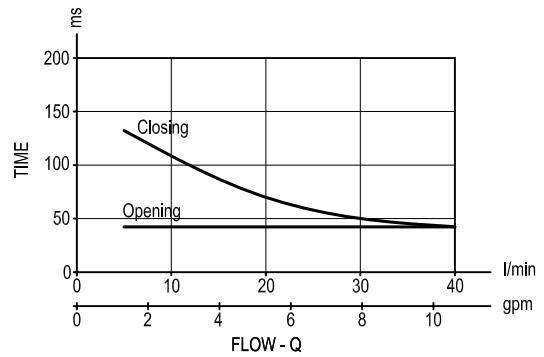
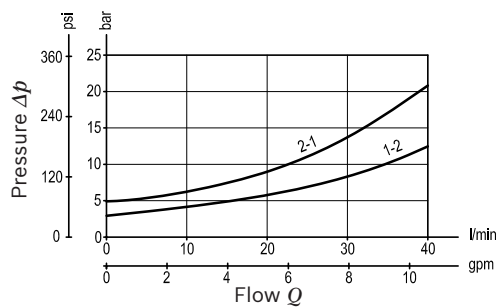
Type	Material number

## Characteristic curves

Version 05-06

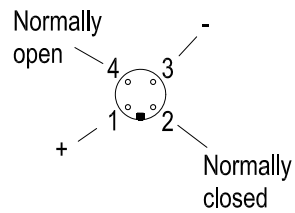
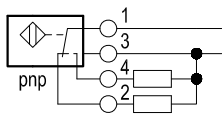


Version 85



## Sensor data:

	24 V DC
Supply voltage	20 to 32
Output load	$\leq 400$ mA



**Dimensions****▼ Version 05-06-85: Solenoid operated valve, poppet 2-way  
normally closed proximity sensor**