

Pilot operated check, pilot to close Common cavity, Size 10

VUPC-10A

04.34.04 - X - 85 - Z

RE 18319-36

Edition: 03.2016

Replaces: 01.2010



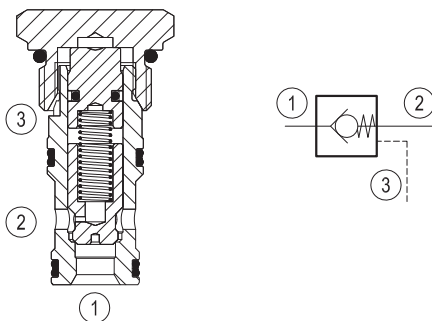
Description

When pressure at 1 rises above the spring bias pressure, the poppet is lifted and flow allowed from 1 to 2. The valve is closed (checked) from 2 to 1. When sufficient pilot pressure is present at port 3, the pilot piston acts to hold the poppet on its seat and flow is blocked from 1 to 2. Precision machining and hardening processes allow virtually leak-free performance in the checked condition.

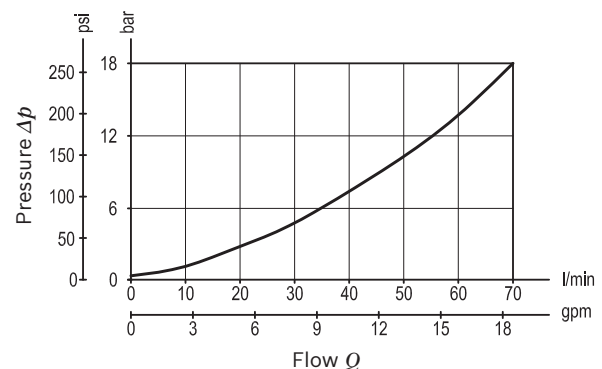
Technical data

Max. operating pressure	350 bar (5000 psi)
Max. flow	70 l/min. (18 gpm)
Pilot ratio	1.9:1
Max. internal leakage	5 drops/min.
Fluid temperature range	-30 to 100 °C (-22 to 212 °F)
Installation torque	41 - 47 Nm (30 - 35 ft-lbs)
Weight	0.15 kg (0.33 lbs)
Cavity	CA-10A-3C (see data sheet 18325-70)
Lines bodies and standard assemblies	Please refer to section "Hydraulic integrated circuit" or consult factory
MTTFd	150 years see data sheet 18350-51
Seal kit ¹⁾	Code: RG10A9010530100 material no: R901111368
Fluids	Mineral-based or synthetics with lubricating properties at viscosities of 5 to 800 mm ² /s (cSt)
Recommended degree of fluid contamination	Nominal value max. 10µm (NAS 8) / ISO 4406 19/17/14
Installation position	No restrictions
Other Technical Data	See data sheet 18350-50

1) Only external seals for 10 valves



Characteristic curve



Ordering code

04.34.04	X	85	Z	00	*
Pilot operated check, pilot to close		Version and options standard			
O-Ring on pilot piston		SPRINGS			
10 With O-Ring		Cracking pressure bar (psi)			
85 Common cavity, Size 10		00	0.5 (7)		

Preferred types

Type	Material number	Type	Material number
043404108500000	R930000552		

Dimensions

