

Solenoid operated valves pilot operated poppet type

2-way normally closed

Common cavity, Size 12

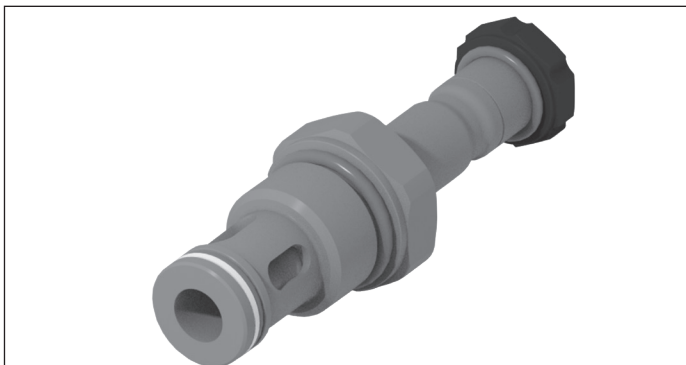
VEI-16-NC

OD.15 - X - 89 - Y - Z

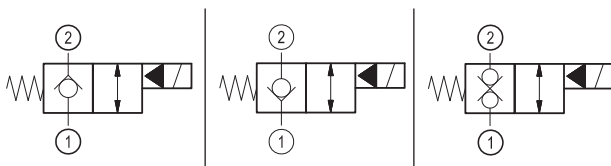
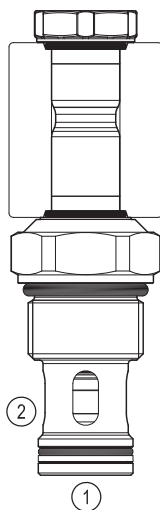
RE 18323-39

Edition: 01.2021

Replaces: 06.2019



PATENT PENDING



Technical data

New VEI-16 family incorporates a new solenoid concept providing excellent performance and enables cartridges to work in severe environment. Cartridges also incorporates advanced design of hydraulic parts providing excellent hydraulic performance.

Technical data

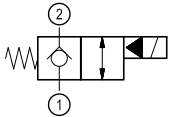
General		
Weight		0.25 kg (0.55 lbs)
Installation orientation		Unrestricted
Storage ambient temperature range		-40 to 100 °C (-40 to 212 °F)
Operating ambient temperature range		-30 to 90 °C (-22 to 194 °F)
Salt spray test to DIN EN ISO 9227:2017-07		500h
Hydraulic		
Max. operating pressure		350 bar (5000 psi)
Flow range		5 - 150 l/min (1 - 40 gpm)
Max. internal leakage:		20 drops/min.
Switching time		Closing ≤ 100 ms Opening ≤ 50 ms
Fatigue cycle life		1 million cycles at 350 bar
Fluid temperature range		-20 to 80 °C (-4 to 176 °F)
Fluids: Mineral-based or synthetics with lubricating properties at viscosities of 20 to 380 mm²/s (cSt)		
Installation torque		54 - 66 Nm (40 - 49 ft-lbs)
Recommended degree of fluid contamination		Nominal value max. 10 µm (NAS 8) ISO 4406 19/17/14
MTTFD		150 years see 18350-51
Common cavity		CA-12A-2N see 18325-70
Seal kit for X=03,05	code material no.	RG12A2010520100 R901111377
Seal kit for X=31	code material no.	RG12A2010530100 R930003374
Seal kit coil and standard cap	code material no.	RG02Z0010000100 R930067869
Seal kit coil and protective cap only for Y=D	code material no.	RG03Z0010000100 R930067870
Other technical data		See data sheet 18350-50
Electrical		
Type of voltage		DC voltage
Coil type		D36
Supply voltage		See data sheet 18325-90
Voltage tolerance against ambient temperature		See characteristic curve
Power consumption		20 W
Type of protection		See data sheet 18325-90

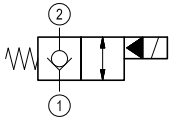
Note: Coils must be ordered separately

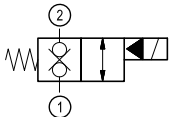
Ordering code

OD.15	X	89	Y	Z	0000	*
--------------	----------	-----------	----------	----------	-------------	----------

Solenoid operated valves
pilot operated poppet type
2-way normally closed

bidirectional type
**03**

bidirectional type
**05**

bidirectional type
**31**

Series 0/A to L
unchanged performances and dimensions

0 = With buna seal
8 = With buna seal and extra spring only for **05**
V = With Viton seal
P = With buna seal and protective cap for override version **D**
T = With Viton seal and protective cap for override version **D**

A = Standard
D = Knob style manual override
E = Pull style manual override
F = Hand operated pull style manual override

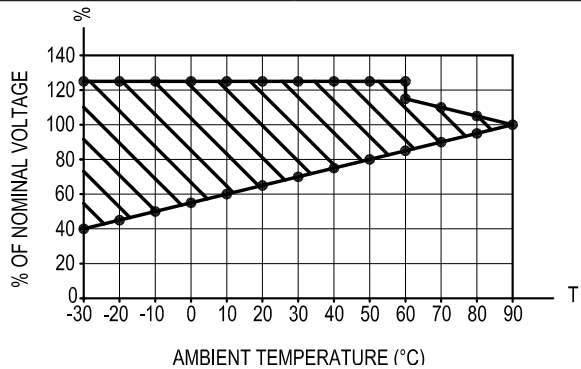
Common cavity: CA-12A-2N

Preferred types

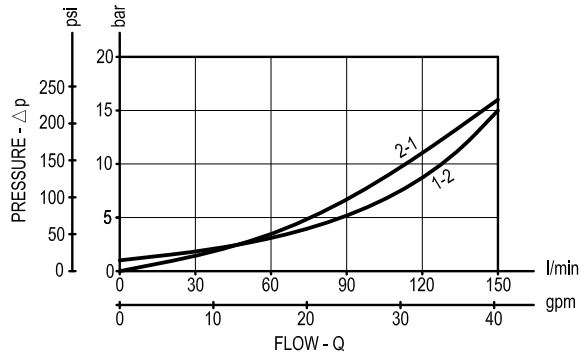
Type	Material number	Type	Material number
OD150589A000000	R930061347		
OD150589D000000	R930065473		
OD150589F000000	R930067898		
OD150589A800000	R930069502		
OD150589E000000	R930068530		
OD150389A000000	R930066083		
OD150389D000000	R930069501		
OD153189A000000	R930067154		
OD153189A800000	R930069494		
OD153189AV00000	R930069493		
OD153189D000000	R930069498		

Characteristic curves

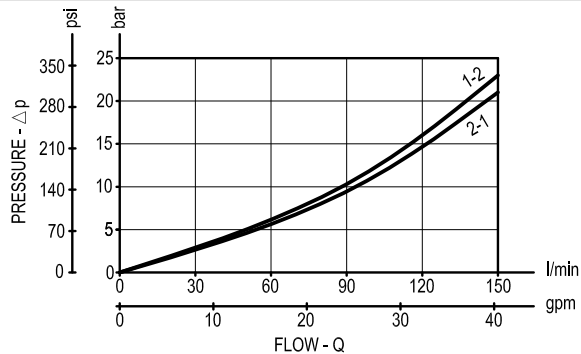
All Versions - Admissible supply voltage Vs. Ambient temperature at 100% duty cycle



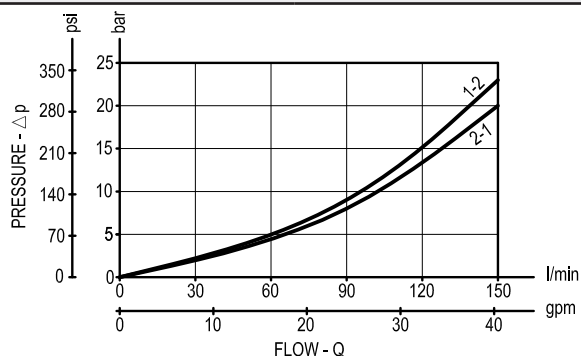
Versions 05



Versions 31

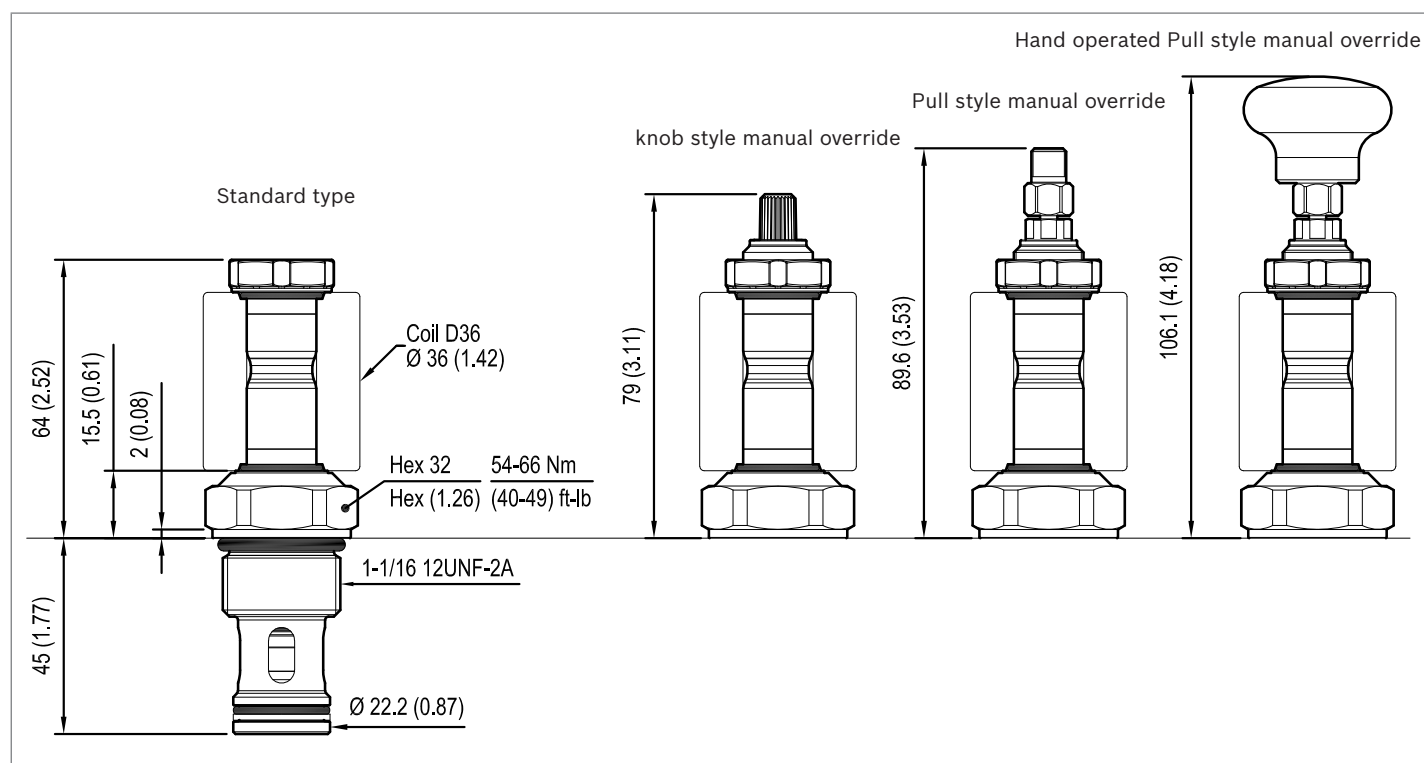


Versions 03



Dimensions

**Solenoid operated valves, poppet 2-way
normally closed**



Knob style manual override and protective cap

