

Relief, direct acting guided poppet type

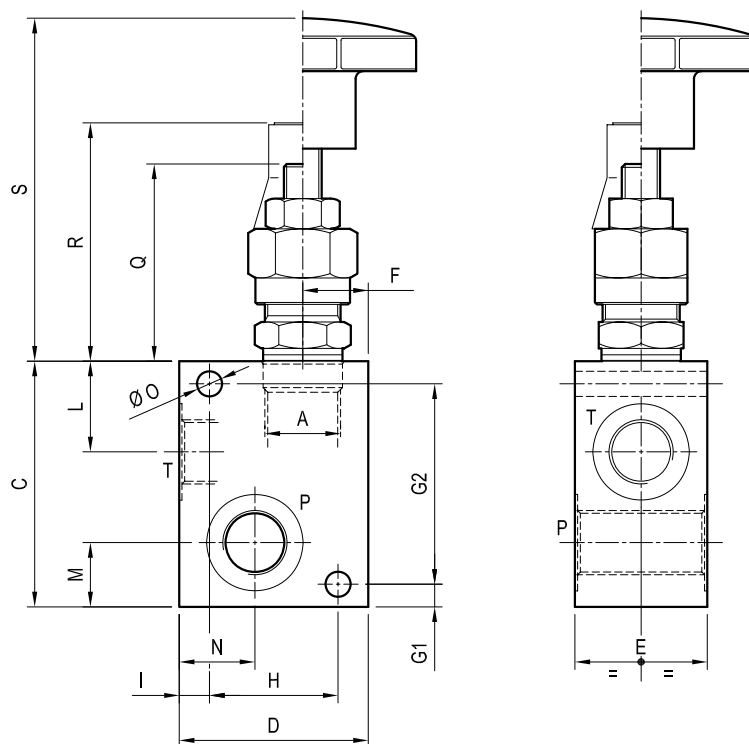
Special cavity

Cartridge style in manifold

VSC-30

05.13.01 - X - Y - Z

Dimensions



Technical data

Max flow:	up to 30 l/min	(8 gpm)
Max operating pressure:	210 bar	(3000 psi)

Standard manifolds in high strength aluminium.

For working pressure up to 350 bar (5000 psi) and for fatigue applications with any working pressure, steel manifolds are available upon request.

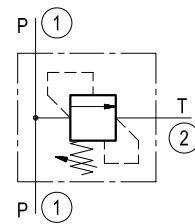
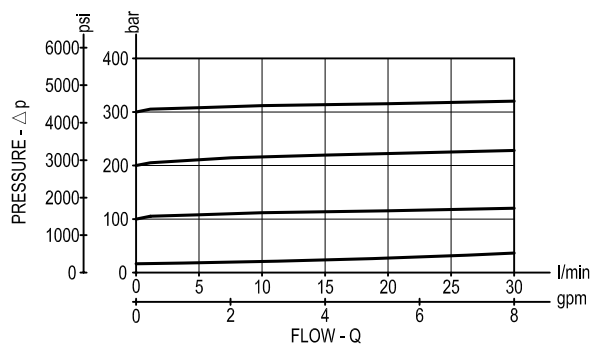


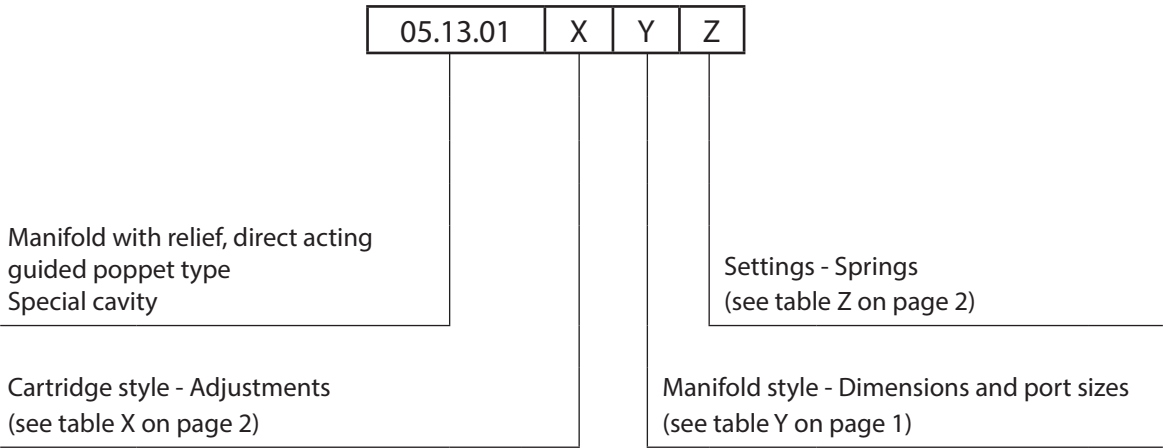
Table "Y"

[illegible]

Performance graph



Ordering code



Preferred types (readily available)

Type	Material number
051301030905000	R930001280
051301030910000	R930001281
051301030920000	R930001282
051301030935000	R930001283
051301030205000	R930001263
051301030210000	R930001264
051301030220000	R930001266
051301030235000	R930001269
051301030305000	R930001271
051301030310000	R930001274
051301030320000	R930001275
051301030335000	R930001278
051301040205000	R930001287
051301040210000	R930001288
051301040220000	R930001289

Type	Material number
051301040235000	R930001290
051301040305000	R930001291
051301040320000	R930001292
051301040335000	R930001293

Further types available by request