

Solenoid operated valves pilot operated poppet type

2-way normally open

Special cavity, 017-E

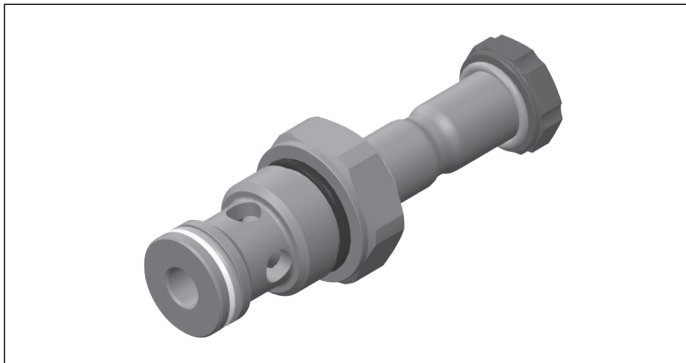
VEI-16-NA

OD.15 - X - 17 - Y - Z - 00

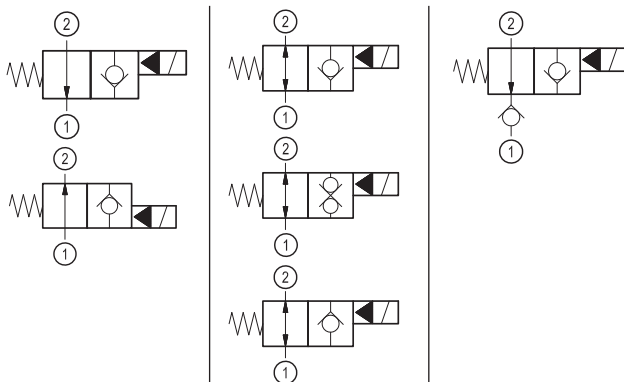
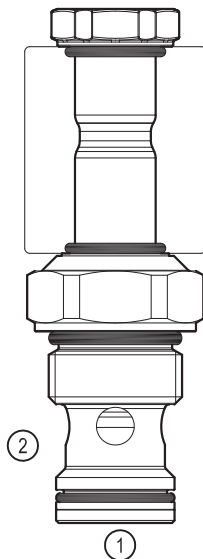
RE 18323-35

Edition: 04.2021

Replaces: 09.2019



PATENT PENDING



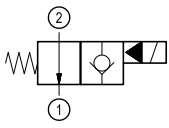
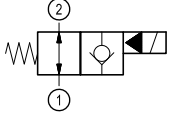
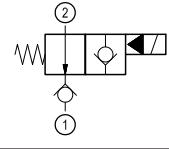
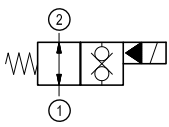
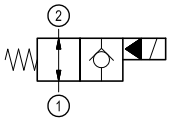
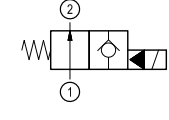
Technical data

New VEI-16 family incorporates a new solenoid concept providing excellent performance and enables cartridges to work in severe environment. Cartridges also incorporates advanced design of hydraulic parts providing excellent hydraulic performance.

Technical data

General		
Weight		0.25 kg (0.55 lbs)
Installation orientation		Unrestricted
Storage ambient temperature range		-40 to 100 °C (-40 to 212 °F)
Operating ambient temperature range		-30 to 90 °C (-22 to 194 °F)
Hydraulic		
Max. operating pressure		350 bar (5000 psi)
Flow range		2 - 70 l/min (0.53 - 18 gpm)
Fatigue cycle life		2 million cycles at 350 bar
Max. internal leakage		5 drops/min. for X=02,06,12 20 drops/min. for X=04,10,32
Installation torque		54 - 66 Nm (40 - 49 ft-lbs)
Switching time		Opening ≤ 50 ms Closing ≤ 100 ms
Fluid temperature range		-20 to 80 °C (-4 to 176 °F)
Fluids: Mineral-based or synthetics with lubricating properties at viscosities of 20 to 380 mm²/s (cSt)		
Recommended degree of fluid contamination		Nominal value max. 10 µm (NAS 8) ISO 4406 19/17/14
MTTFd		150 years see RE 18350-51
Special cavity		017-E see 18325-75
Seal kit for X= 02,06,12	code	RG17E201052010
	material no.	R934003562
Seal kit for X= 04,32	code	RG17E201053010
	material no.	R934003563
Seal kit coil and standard cap	code	RG02Z0010000100
	material no.	R930067869
Seal kit coil and protective cap only for Y=B	code	RG03Z0010000100
	material no.	R930067870
Seal kit coil and protective cap only for Y=C	code	RG04Z0010000100
	material no.	R930069171
Other technical data		See data sheet 18350-50
Electrical		
Type of voltage		DC voltage
Coil type		D36
Supply voltage		See data sheet 18325-90
Voltage tolerance against ambient temperature		See characteristic curve
Power consumption		20 W
Type of protection		See data sheet 18325-90
Note: Coils must be ordered separately		

Ordering code

OD.15	X	17	Y	Z	0000	*
Solenoid operated valves pilot operated poppet type 2-way normally open						Series O/A to L unchanged performances and dimensions
monodirectional type 	02					0 = With buna seal V = With Viton seal P = With buna seal and protective cap for override version B and C T = With Viton seal and protective cap for override version B and C
bidirectional type 	06					
monodirectional type with check 	12					A = Standard B = Push style manual override C = Push and twist style manual override
bidirectional type 	32					Special cavity: 017-E
bidirectional type 	04					
monodirectional type 	10					

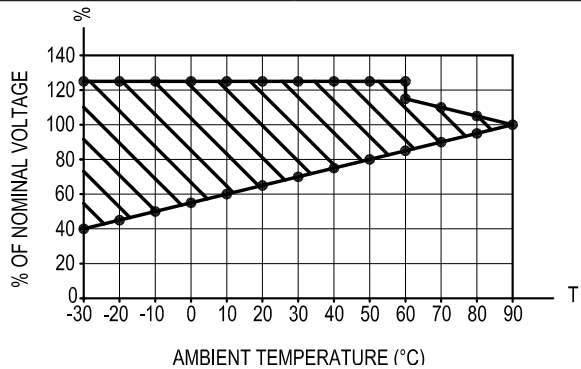
Preferred types

Type	Material number
OD150217A000000	R930063870
OD150217C000000	R930065471
OD150617A000000	R930064265
OD150617B000000	R930064334
OD150617C000000	R930063423
OD151217A000000	R930063907
OD153217A000000	R930064102
OD153217B000000	R930067161

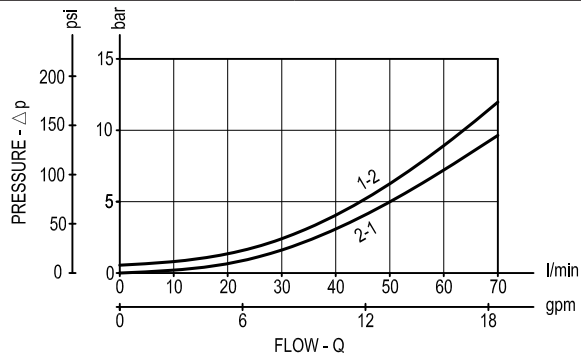
Type	Material number
OD153217BP00000	R930067159
OD153217C000000	R930067160
OD153217CP00000	R930067157
OD150417A000000	R930066966
OD151017A000000	R930076206

Characteristic curves

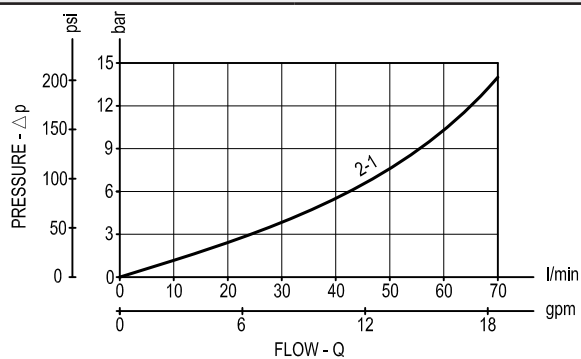
All Versions - Admissible supply voltage Vs. Ambient temperature at 100% duty cycle



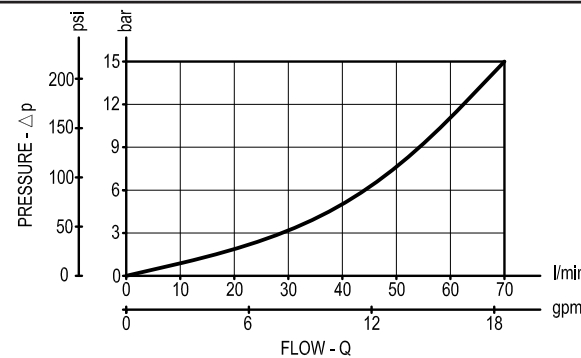
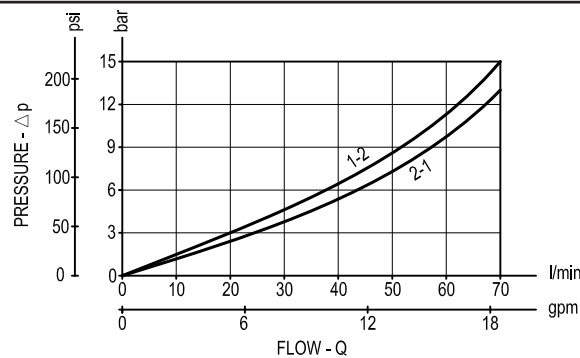
Versions 02, 06



Version 12



Version 32 Versions 04,10



Dimensions**Solenoid operated valves, poppet 2-way
normally open**