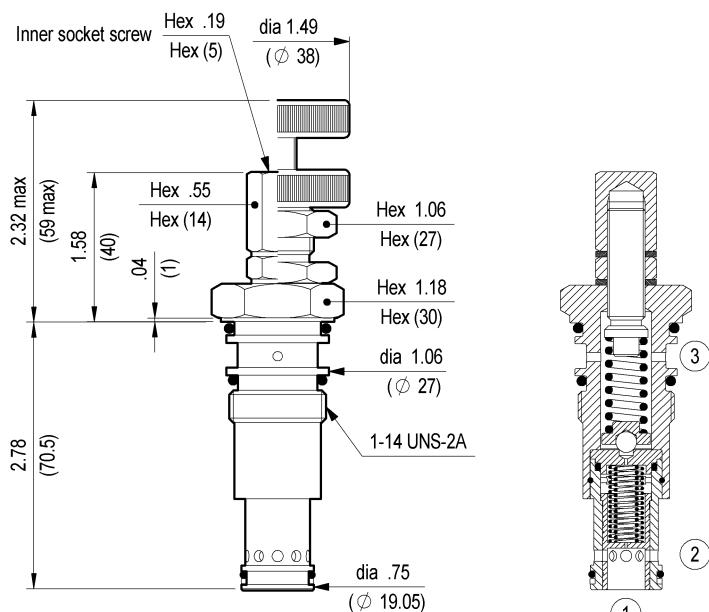


PRESSURE REDUCING, PILOT OPERATED SPOOL TYPE SPECIAL CAVITY

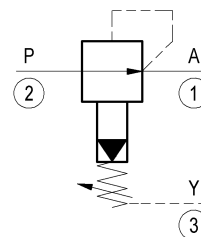
VRP-150

04.93.01 - X - 99 - Z



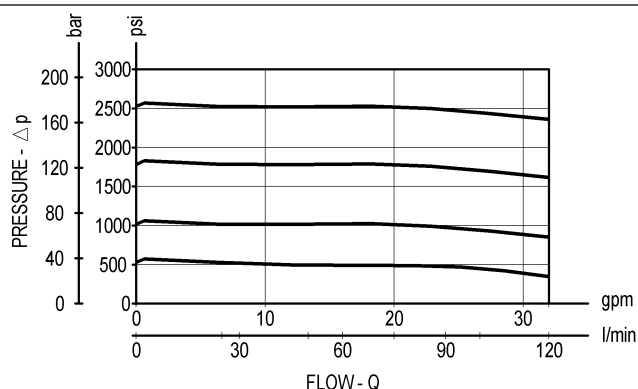
Inches
(mm)

Initially, flow passes freely from 2 to 1. When the pressure at 1 exceeds the pressure setting, the valve acts to restrict input flow at 2. This increases the pressure drop through the valve and maintains consistent pressure at 1. The spring chamber is drained at 3 to prevent a build-up of back-pressure against the spool.



TECHNICAL DATA

Max. pressure:	3600 psi	(250 bar)
Max. regulated pressure:	3000 psi	(210 bar)
Max. flow:	32 gpm	(120 l/min)
Special cavity :	072 (see page CT.S.002.U)	
Installation torque :	90-91 ft-lb	(121-123 Nm)
Weight:	0.617 lbs	(0.280 Kg)
Std. internal orifice :	0.6 mm	



X

ADJUSTMENTS

03 Leakproof hex. socket screw



04 Handknob and locknut



SPRINGS

Z	Adj. press. range psi (bar)	Press. increase psi / turn (bar/turn)	Standard setting psi (bar)		
20	290-3000 (20-210)	464 (32)	1450 (100)		