

## General

Competitively priced, good performance and versatility combined with a compact design are the main characteristics of this new series of valves. The aluminium valve body and spool/seal arrangement optimize both the flow rate and the valve switching time.

This new series of valves are available with G1/8" and G1/4" ports in 3/2, 5/2 and 5/3 versions. Monostable or bistable versions are available and include an integrated technopolymer solenoid operator with 9mm stem and built in manual override

The valves can be supplied with or without the solenoid coil, however, if the solenoid coil is required please refer to the following table:

Voltages		Coil Code	Voltage Code
Direct current DC	12V (3,5W)	<b>MF4</b>	<b>F04</b>
	24V (3,5W)	<b>MF5</b>	<b>F05</b>
Alternating current AC 50 Hz	24V (3,7W)	<b>MF56</b>	<b>F56</b>
	110V (3,7W)	<b>MF57</b>	<b>F57</b>
	230V (3,7W)	<b>MF58</b>	<b>F58</b>

Connectors Ordering codes		
Voltages		Kit 100 pieces
DC/AC	24V	<b>888.11.01L-K</b>
Alternating current AC 50 - 60 Hz	110V	<b>888.11.02L-K</b>
	230V	<b>888.11.03L-K</b>

## Construction characteristics

Body	Aluminium
Operators	Technopolymer
	Aluminium for spring bottom plates
Spools	Aluminium
Seals	NBR
Pistons	Technopolymer
Springs	Spring steel

## Use and maintenance

These valves have an average life of 15 million cycles depending on the application and air quality, filtered and lubricated air using specified lubricants will dramatically reduce the wear of the seals and ensures long and trouble free operation.

Please ensure that the valve is being used according with the manufacturers specification, such as air pressure and temperature and that exhaust ports 3 & 5 are protected against the possible ingress of dirt or debris.

Repair kits including the spool complete with seals are available for overhauling the valves; however, although this is a simple operation it should be carried out by a competent person.

**Solenoid - Solenoid - 5/2**

Ordering code

**8884.52.00.35.V**

VOLTAGE

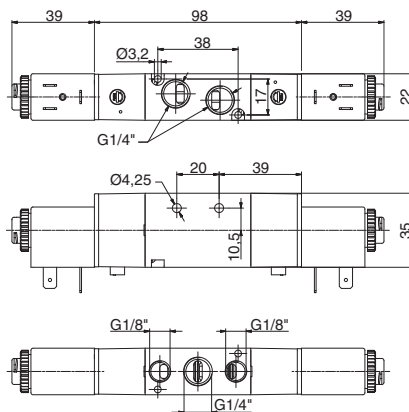
F05=24 V DC

F56=24 V (50-60 Hz)

F57=110 V (50-60 Hz)

F58=230V (50-60 Hz)

F00=Without coil



Weight gr. 320  
Minimum working pressure 2 bar



**Operational characteristics**

Fluid	Max working pressure (bar)	Temperature °C	Flow rate at 6 bar with $\Delta p=1$ (NI/min)	Orifice size (mm)	Working port size
Filtered and lubricated air	8	-5 ÷ +50	890	6,5	G 1/4"

**Solenoid - Solenoid - 5/3**

Ordering code

**8884.53.F.35.V**

FUNCTION

31=Closed centres

32=Open centres

33=Pressured centres

VOLTAGE

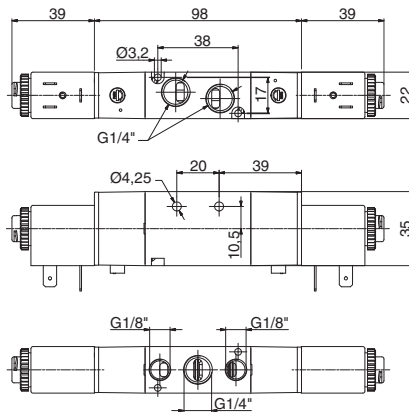
F05=24 V DC

F56=24 V (50-60 Hz)

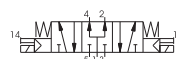
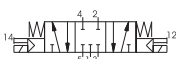
F57=110 V (50-60 Hz)

F58=230V (50-60 Hz)

F00=Without coil



Weight gr. 330  
Minimum working pressure 2,5 bar



**Operational characteristics**

Fluid	Max working pressure (bar)	Temperature °C	Flow rate at 6 bar with $\Delta p=1$ (NI/min)	Orifice size (mm)	Working port size
Filtered and lubricated air	8	-5 ÷ +50	540	6,5	G 1/4"