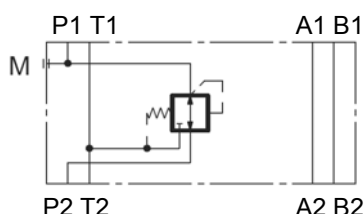




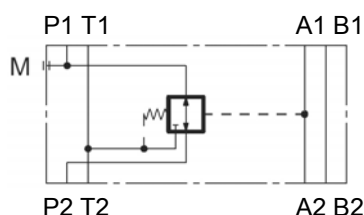
Pressure Reducing Valve direct acting Sandwich plate type ZW-DM06

P_{max} = 350 bar
Q_{max} = 50 l/min

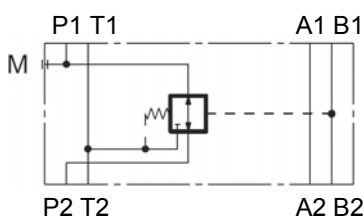
SYMBOL ZW-DM06 PT



ZW-DM06 PA

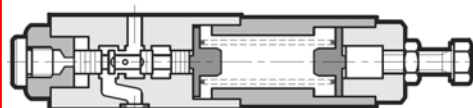


ZW-DM06 PB

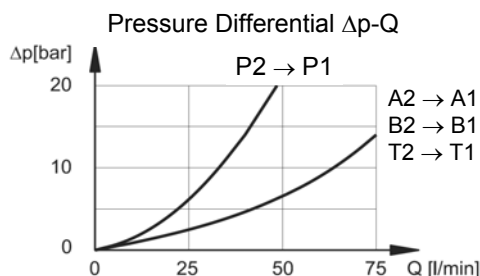


Function

P1



P2



FEATURES

- Hole pattern according to DIN 24340 Form A6, ISO 4401-03, nominal size 06
- Pressure reducing valve sandwich plate type, normally open, with pressure reducing function to the consumer
- easy to assemble under body mounted spool valves according to DIN 24340 Form A6, ISO 4401 (use longer screws)
- type according to ISO 7790
- adjustable by tool

Types

- type PT: Pressure regulation in line P
- type PA: Pressure regulation in line A (Highest pressure in line B)
- type PB: Pressure regulation in line B (Highest pressure in line A)

SPECIFICATIONS

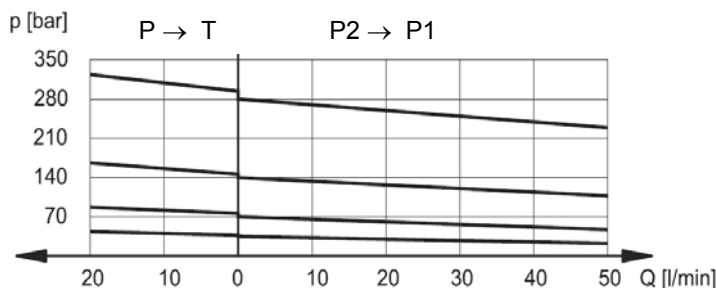
Operating pressure:	max. 350 bar
Pressure ranges:	3 – 35 bar, 10 – 70 bar 30 – 140 bar, 60 – 280 bar
Nominal flow:	max. 50 l/min (in controlled lines) max. 75 l/min (in free lines)
Fluids:	hydraulic oil according to DIN 51524 Part 1 / 2
Media operating temp. range:	-20°C up to max. +80°C
Ambient temperature range:	-20°C up to max. +50°C
Viscosity range:	10 – 400 mm ² /s is recommended
Filtration:	Class 20/18/15 to ISO 4406 or cleaner

Weight: 1,4 kg incl. valve

PERFORMANCE

measured at $v = 32 \text{ mm}^2/\text{s}$ and $T_{\text{oil}} = 50^\circ \text{C}$

Pressure drop Δp -Q



(Index 1 = valve side / Index 2 = sub plate side)

Standard models	Part No.
ZW-DM06-01-PT 280V- V	6074683
ZW-DM06-01-PA 280V- V	6074686
ZW-DM06-01-PB 280V- V	6074689
Other types on request	

MODEL CODE

ZW-DM06 - 01 - PT - 280V - V

Name and nominal size _____
 Pressure reducing valve
 Sandwich plate type NW6

Series _____
 01 = Standard, phosphated

Types _____
 PT = Pressure regulation in line P
 PA = Pressure regulation in line A
 PB = Pressure regulation in line B

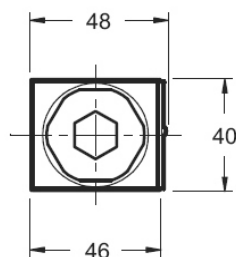
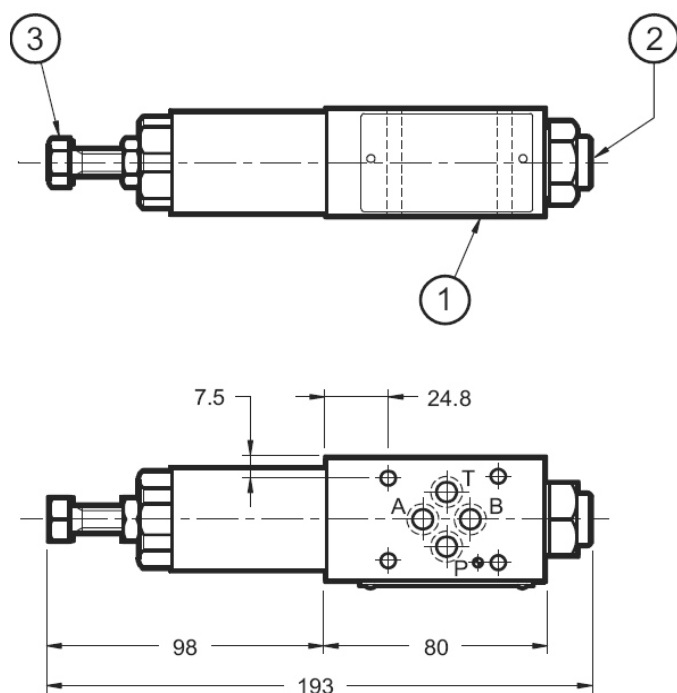
Pressure ranges

35 = 35 bar
 70 = 70 bar
 140 = 140 bar
 280 = 280 bar

Adjustment option _____
 V = adjustable by tool

Seals _____
 V = FKM (Standard)
 N = NBR

Dimensions



- 1 - O-Ring 9,25 x 1,78-90Sh FKM (4 pcs.)
- 2 - Port for pressure gauge 1/4" BSP
- 3 - Fixing screw, hex size 17

All dimensions in mm.
 Fixing elements are not in scope of delivery.

Mounting plate according to ISO 4401-03

