

# Solenoid operated valves pilot operated poppet type

## 2-way normally closed

### Special cavity, 039-E

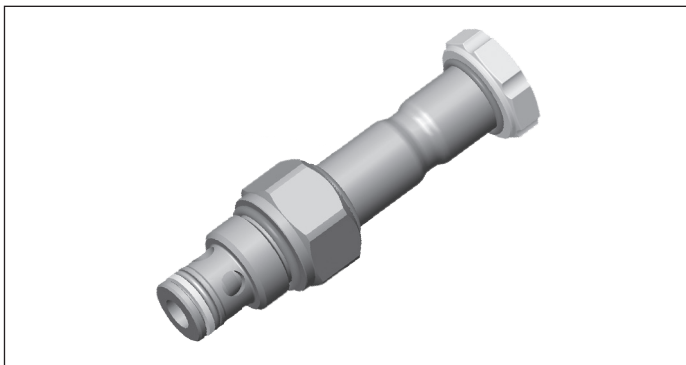
VEI-16-08F-NC

OD.15 - X - 39 - Y - Z

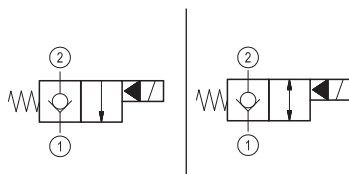
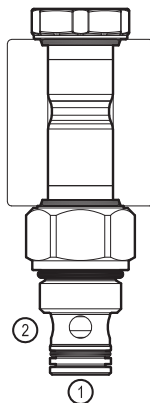
**RE 18323-42**

Edition: 06.2019

Replaces: 02.2019



**PATENT PENDING**



#### Technical data

New VEI-16 family incorporates a new solenoid concept providing excellent performance and enables cartridges to work in severe environment. Cartridges also incorporates advanced design of hydraulic parts providing excellent hydraulic performance.

#### Technical data

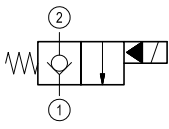
General		
Weight		0.15 kg (0.33 lbs)
Installation orientation		Unrestricted
Storage ambient temperature range		-40 to 100 °C (-40 to 212 °F)
Operating ambient temperature range		-30 to 90 °C (-22 to 194 °F)
Hydraulic		
Max. operating pressure		350 bar (5000 psi)
Flow range		0.5 - 40 l/min (0.1 - 11 gpm)
Fatigue cycle life		2 million cycles at 350 bar 150000 cycles at 420 bar
Max. internal leakage:		5 drops/min. for X= 01,05
Switching time		Opening ≤ 50 ms
		Closing ≤ 100 ms
Fluid temperature range		-20 to 80 °C (-4 to 176 °F)
Fluids: Mineral-based or synthetics with lubricating properties at viscosities of 20 to 380 mm <sup>2</sup> /s (cSt)		
Installation torque		39 - 51 Nm (29 - 38 ft-lbs)
Recommended degree of fluid contamination		Nominal value max. 10 µm (NAS 8) ISO 4406 19/17/14
MTTFd		150 years see RE 18350-51
Special cavity		039-E
Seal kit for X=01,05	code	RG39E201052010
	material no.	R934003584
Seal kit coil and standard cap	code	RG01Z0010000100
	material no.	R930058940
Other technical data		See data sheet 18350-50
Electrical		
Type of voltage		DC voltage
Coil type		D36
Supply voltage		See data sheet 18325-90
Voltage tolerance against ambient temperature		See characteristic curve
Power consumption		20 W
Type of protection		See data sheet 18325-90
Note: Coils must be ordered separately		

Ordering code

<b>OD.15</b>	<b>X</b>	<b>39</b>	<b>Y</b>	<b>Z</b>	<b>0000</b>	<b>*</b>
--------------	----------	-----------	----------	----------	-------------	----------

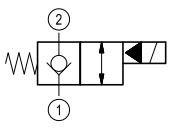
Solenoid operated valves  
pilot operated poppet type  
2-way normally closed

monodirectional type



**01**

bidirectional type



**05**

Series 0/A to L  
unchanged performances and dimensions

0 = With buna seal  
8 = With buna seal and extra spring only for 05

A = Standard

Special cavity: 039-E

Preferred types

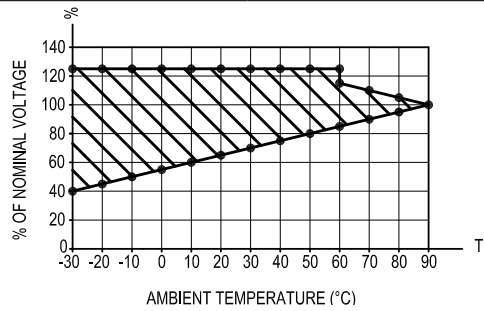
Type	Material number
OD150139A000000	R930058432
OD150139A800000	R930064451
OD150539A000000	R930058436

Type	Material number

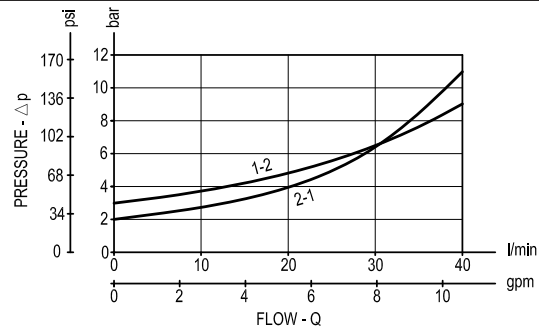
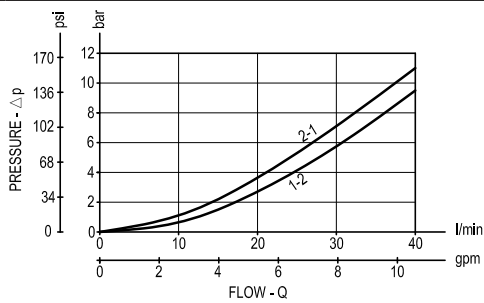
Bosch Rexroth Oil Control S.p.A., RE 18323-42/06.2019

Characteristic curves

All Versions - Admissible supply voltage Vs. Ambient temperature at 100% duty cycle



Versions 01, 05Version 05 with extra spring



**Dimensions**

**Solenoid operated valves, poppet 2-way  
normally closed**

