



INTERNATIONAL

3-WAY SOLENOID POPPET VALVE WSE3

Pressures to 7,000 psi • Flows to 3 gpm • Leakfree

FEATURES

- Leakfree poppet design
- No dynamic seals
- Excellent heat dissipation
- Low operating noise level
- Fully encapsulated coil
- DIN 43650 connector standard
- Viton™ seals standard
- Steel Line Bodies available for in-line mounting

SPECIFICATIONS

Maximum Operating Pressure
7,000 psi (500 bar)

Nominal Flow
3 gpm (12 l/min)

Operating Temperature Range
-4°F to 176°F (-20°C to 80°C)

Recommended Media
General Purpose Hydraulic Fluid

Viscosity Range
35 SUS to 1,760 SUS

Filtration Required
20 Micron Absolute Rating

Internal Leakage
Leakfree

Duty Cycle
Continuous at 110% Rated Voltage

Solenoid Current (nominal)
24 VDC, 1.5 Amps
115 VAC, 0.26 Amps

Solenoid Coil Power (nominal)
26 Watts



Model WSR3E Solenoid Poppet Valve and Model WSE3R Solenoid Poppet Valve (with line body)

Model Code

WSE 3 E 3 C . X / G12 / - 1/4 NPT

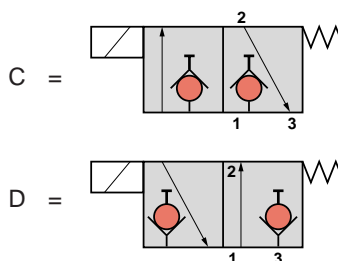
Directional Control Valve ————
WSE

Size ————
3 = Maximum Flow
3 = 3 gpm (12 l/min)

Type of Connection ————
E = Cartridge Valve
R = Cartridge Valve with Pipe Block Connection

Type ————

Configuration ————



Modification Number (latest version always supplied) ————

Solenoid ————

G12 = 12 VDC

G24 = 24 VDC

W115-60 = 115 V/60 Hz AC

W220-60 = 220 V/60 Hz AC

Electrical Connections ————

(omit) = DIN 43650 Connector (standard)

Line Body ————

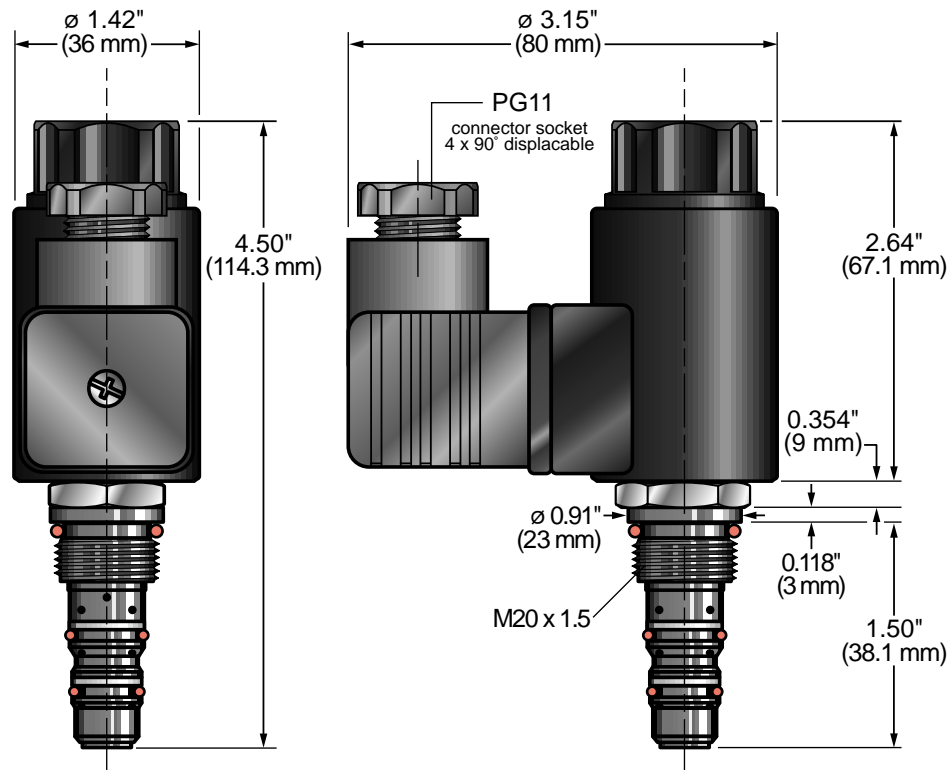
(omit) = None ———— (if E was chosen in **Type of Connection** above)

1/4-NPT = 1/4" NPT ———— (if R was chosen in **Type of Connection** above)

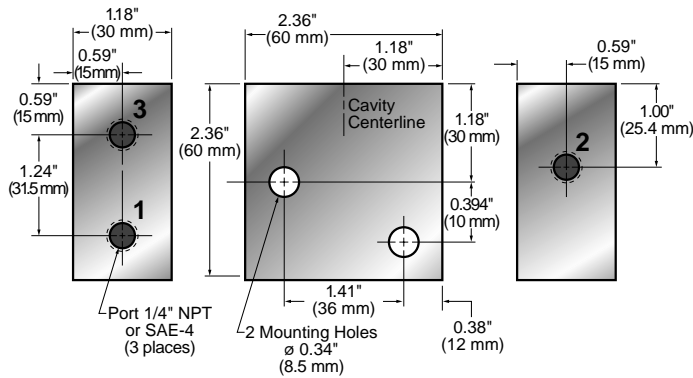
SAE-4 = SAE 4 ————

*Model Codes Containing Red are non-standard items — Contact **HYDAC** for availability*

3-Way Solenoid Poppet Valve

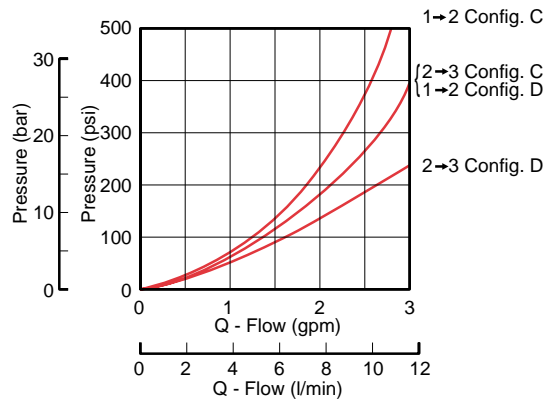


Line Body



Pressure Drop vs. Flow

Viscosity - 165 SUS @ 125°F



Dimensions are for general information only. Please verify all critical dimensions by requesting a certified print.