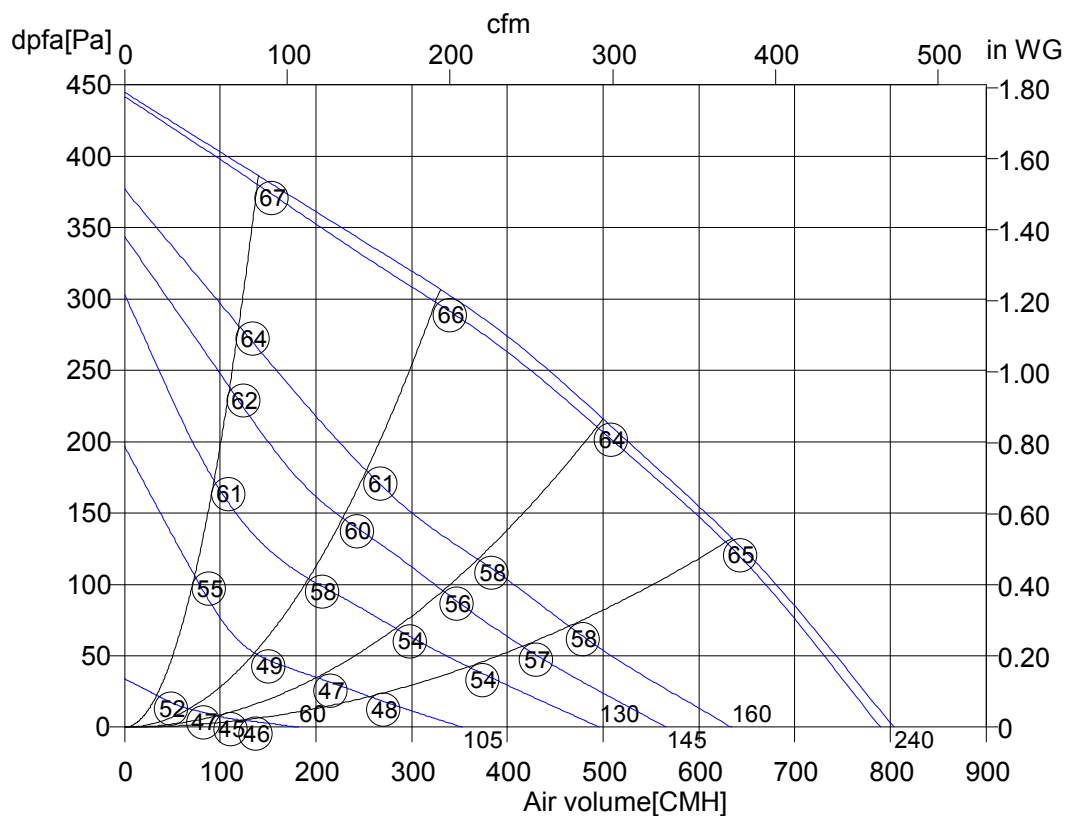


Friday, 26.June 2015



Tube fan with casing made of plastic



○ Sound power level LwA6[dBA]

RS 200	
Art. No.	F00-20051
U[V]	230
f[Hz]	50
P[kW]	0.115
I[A]	0.50
n[1/min]	2395
C[μF]	3
tR[°C]	50
dpst[Pa]	-
Delta I[%]	2
Ia/In	1.5
IP	44
Weight[kG]	3.4
Wir. diag.	01.009
Overall eff	25.6
Eff. Grade N	-
Power input	0.119
Air flow	436
Press. increase	253
Speed n	-

Octave sound power level

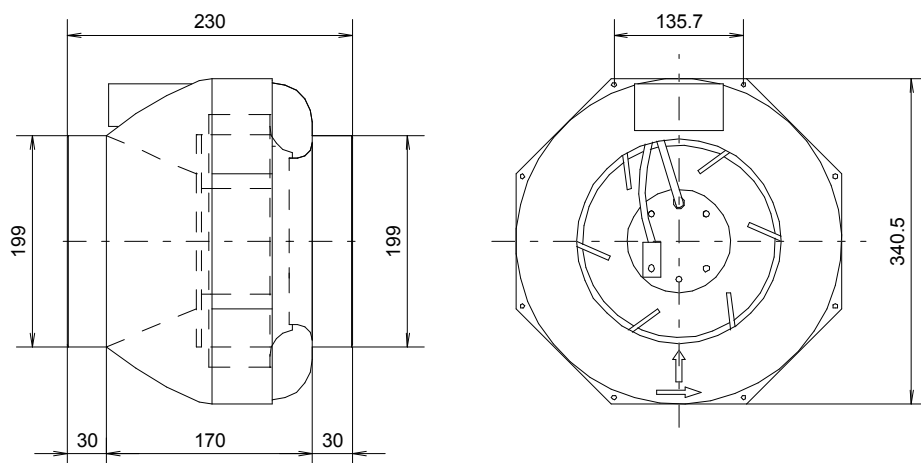
f[Hz]	125	250	500	1000	2000	4000	8000
LwA6[dBA]:	48	59	57	62	64	59	50
LwA5[dBA]:	47	58	61	63	63	58	48
LwA2[dBA]:	54	61	61	62	62	56	46

Friday, 26.June 2015



Tube fan
with casing made of plastic

RS 200



Friday, 26.June 2015

Pos.	Pieces	Description	Price																														
		<p>Tube fans with casing made of plastic</p> <p>The casing of the RS series is made from shock-proof, recyclable black plastic (PA 6.6 + GF) with integrated terminal box and the possibility to mount a bracket. Inlet and outlet side with duct connection for standard round ducts can be mounted in any position. Both ranges with backward curved impellers made from plastic, size 355 L made from aluminium and with speed controllable external rotor motor, fitted into the impeller. The fans are balanced according to quality level G 2.5, DIN/ISO 1940 on two levels. Motor closed, protection class IP 44/54, with thermal contacts, wired in series in motor windings from size R 355 L. Maintenance free ball bearings, closed on both sides, sealed for life.</p> <p>Documentation: Declaration of incorporation and operating instruction are according to Machinery Directive 2006/42/EC, CE identification in accordance to EMC-directive 2004/108/EC and Low Voltage Directive 2006/95/EC. Motor operating instruction is available from motor manufacturer.</p> <p>Nominal data</p> <table><tr><td>Type</td><td>RS 200</td></tr><tr><td>Article no.</td><td>F00-20051</td></tr><tr><td>Voltage[V]</td><td>230</td></tr><tr><td>Frequency[Hz]</td><td>50</td></tr><tr><td>Power P1[kW]</td><td>0.115</td></tr><tr><td>Current I[A]</td><td>0.50</td></tr><tr><td>Speed n[1/min]</td><td>2395</td></tr><tr><td>Capacitor C[µF]</td><td>3</td></tr><tr><td>Max. air temp.tR[°C]</td><td>50</td></tr><tr><td>Min. pressure dpst[Pa]</td><td>-</td></tr><tr><td>Delta I[%]</td><td>2</td></tr><tr><td>Startup current Ia/In</td><td>1.5</td></tr><tr><td>Protection-mode</td><td>IP 44</td></tr><tr><td>Weight[kg]</td><td>3.4</td></tr><tr><td>wiring diagram</td><td>01.009</td></tr></table>	Type	RS 200	Article no.	F00-20051	Voltage[V]	230	Frequency[Hz]	50	Power P1[kW]	0.115	Current I[A]	0.50	Speed n[1/min]	2395	Capacitor C[µF]	3	Max. air temp.tR[°C]	50	Min. pressure dpst[Pa]	-	Delta I[%]	2	Startup current Ia/In	1.5	Protection-mode	IP 44	Weight[kg]	3.4	wiring diagram	01.009	
Type	RS 200																																
Article no.	F00-20051																																
Voltage[V]	230																																
Frequency[Hz]	50																																
Power P1[kW]	0.115																																
Current I[A]	0.50																																
Speed n[1/min]	2395																																
Capacitor C[µF]	3																																
Max. air temp.tR[°C]	50																																
Min. pressure dpst[Pa]	-																																
Delta I[%]	2																																
Startup current Ia/In	1.5																																
Protection-mode	IP 44																																
Weight[kg]	3.4																																
wiring diagram	01.009																																

Friday, 26.June 2015



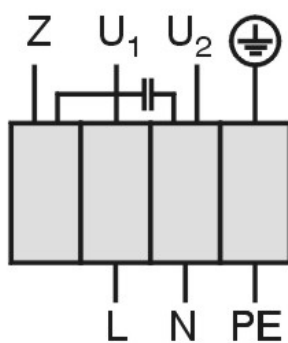
Tube fan
with casing made of plastic

RS 200

Einphasenwechselstrommotor mit Betriebskondensator und Thermostatschalter.
Thermostatschalter intern mit der Wicklung in Reihe geschaltet.

Single phase A.C. motor with operating capacitor and thermostatic switch.
Thermostatic switch internal wired in series with windings.

***Moteur monophasé avec condensateur permanent et interrupteur
thermostatique en série avec le bobinage en cas de branchement***



U₁ blau / blue / bleu
U₂ schwarz / black / noir
Z braun / brown / brun
PE gelb-grün
yellow-green
jaun-vert

01.009

TK3-20005