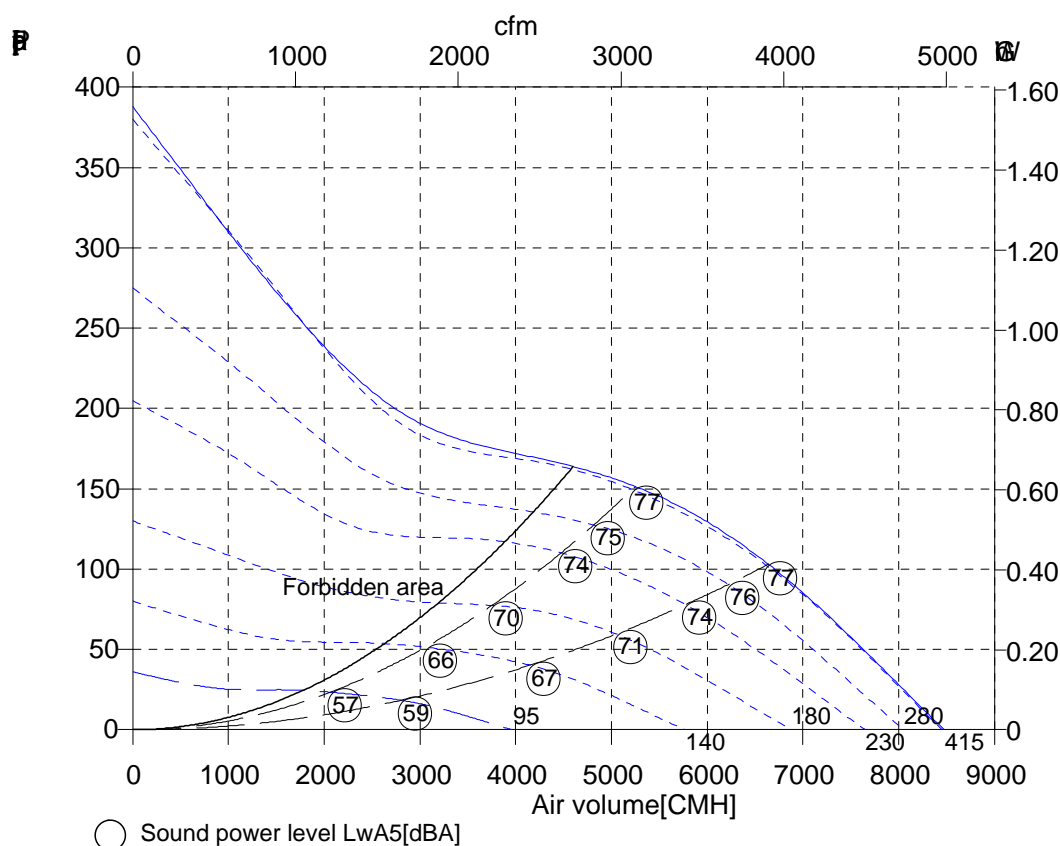





For refrigeration and air conditioning



AKSD 500-4 K.5HA	
Art. No.	
U[V]	400 D
f[Hz]	50
P[kW]	0.70
I[A]	1.51
n[1/min]	1390
C[μF]	-
tR[°C]	60
dpst[Pa]	-
Delta I[%]	9.0
Ia/I <sub>n</sub>	3.8
IP	54
Weight[kG]	9.50
Wir. diag.	01.006
Overall eff [%]	32.8
Eff. Grade N	40
Power input [kW]	0.660
Air flow [m³/h]	5585
Press. [Pa]	140
Speed [1/min]	1399
Velocity [m/s]	7.89

f[Hz]	125	250	500	1000	2000	4000	8000
LwA5[dBA]:	-19	-11	-9	-6	-5	-7	-19

Version 4.1.1.32/20161006



**Axial fan**  
For refrigeration and air conditioning

## Version 4.1.1.32/20161006

Pos.	Pieces	Description	Price
		<p><b>Nominal data</b></p> <p>Type AKSD 500-4 K.5HA</p> <p>Article no.</p> <p>Voltage[V] 400 D</p> <p>Frequency[Hz] 50</p> <p>Power P1[kW] 0.70</p> <p>Current I[A] 1.51</p> <p>Speed n[1/min] 1390</p> <p>Capacitor C[μF] -</p> <p>Max. air temp.tR[°C] 60</p> <p>Min. pressure dpst[Pa] -</p> <p>Delta I[%] 9.0</p> <p>Startup current Ia/In 3.8</p> <p>Protection-mode IP 54</p> <p>Weight[kg] 9.50</p> <p>wiring diagram 01.006</p>	

Wednesday, 16. November 2016



## Axial fan

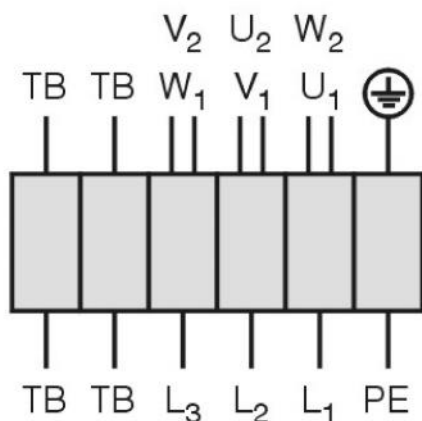
For refrigeration and air conditioning

### AKSD 500-4 K.5HA

Drehstrommotor in  $\Delta$ -Schaltung mit Thermostatschalter (TB).  
Drehrichtungsänderung durch Vertauschen von 2 Phasen.

**Three phase motor in delta connection with thermostatic switch (TB). Changing of rotation direction by interchanging of 2 phases.**

***Moteur triphasé branché en triangle avec interrupteur thermostatique (TB). Changement de sens de rotation par inversion de deux phases.***

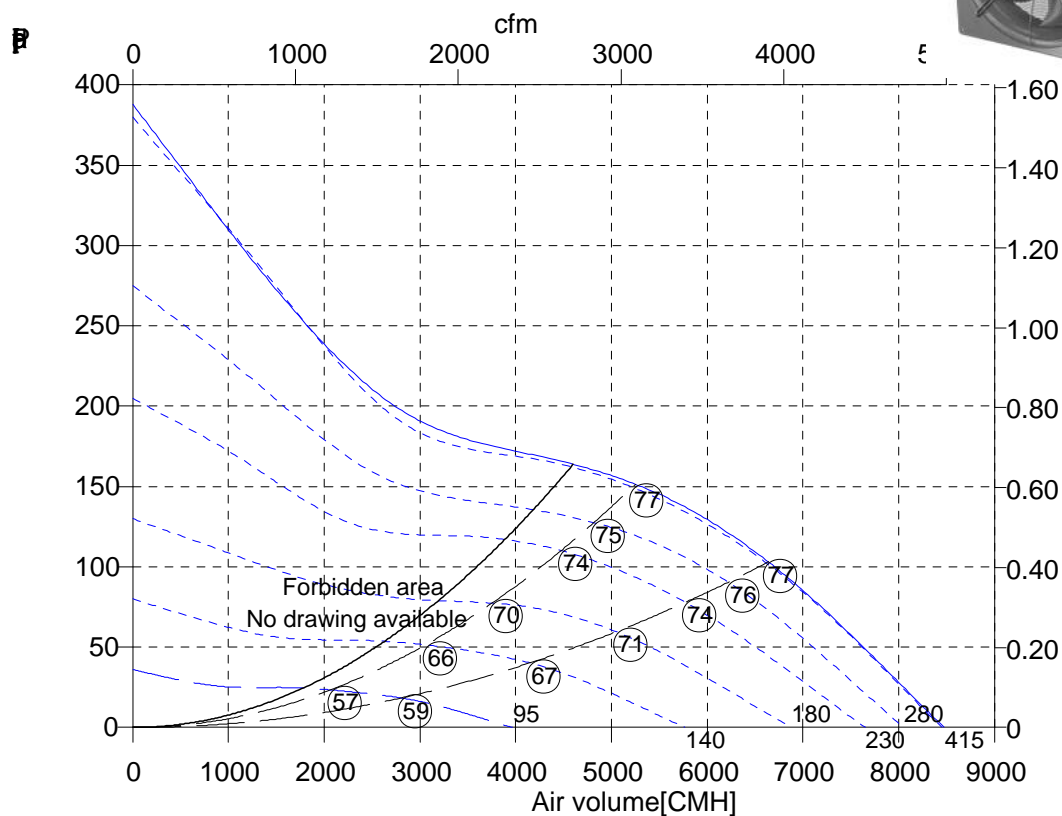


U <sub>1</sub>	braun / brown / brun
V <sub>1</sub>	blau / blue / bleu
W <sub>1</sub>	schwarz / black / noir
U <sub>2</sub>	rot / red / rouge
V <sub>2</sub>	grau / grey / gris
W <sub>2</sub>	orange / orange / orange
TB	weiß / white / blanc
PE	gelb-grün yellow-green jaune-vert

01.006

TK3-20004

For refrigeration and air conditioning



AKSD 500-4 K.5HA	
Art. No.	
U[V]	400 D
f[Hz]	50
P[kW]	0.70
I[A]	1.51
n[1/min]	1390
C[μF]	-
tR[°C]	60
dpst[Pa]	-
Delta I[%]	9.0
Ia/I <sub>n</sub>	3.8
IP	54
Weight[kG]	9.50
Wir. diagr.	01.006

○ Sound power level  
LwA6[dBA]

Version 4.1.1.32/20161006