

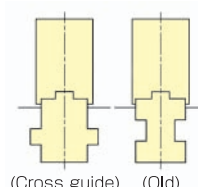
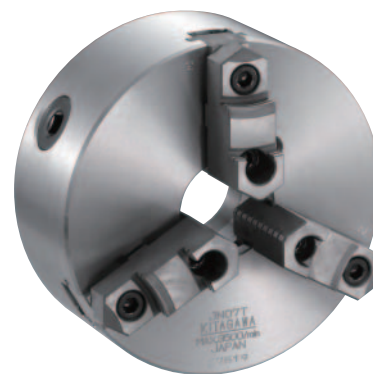


CHUCK

Scroll Chuck with Integrated Jaw (Straight Recess) JN..T series

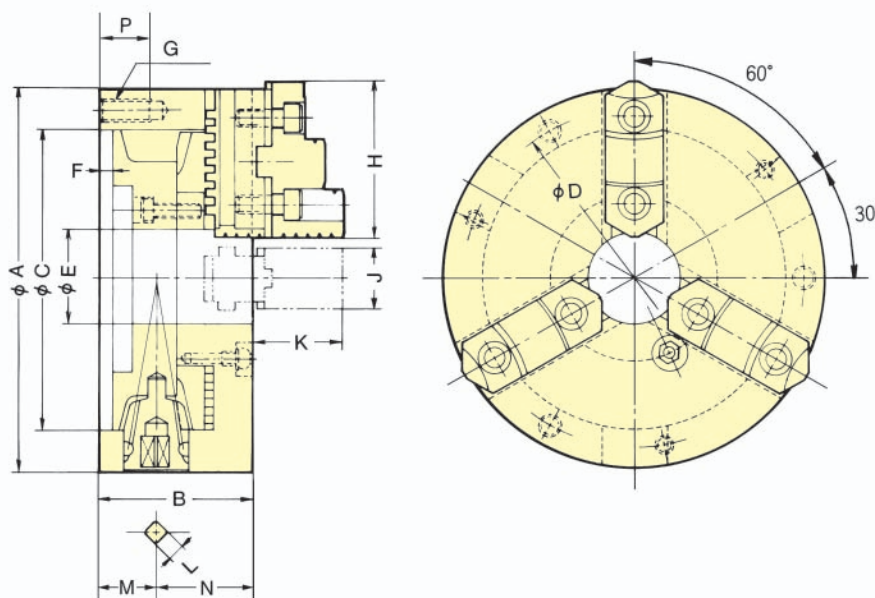
Two piece jaw

- **Straight Recess**
- **Cross guide (JN..T series)**
Base jaw is located using cross guide reducing runout and distortion.
- **Separated-jaw type (with hard jaw and soft jaws)**
Top jaw can be changed according to application (i.e. hard jaw suitable for heavy cutting, and soft jaw suitable for precisely machining. Each jaw can also be changed easily. Especially, the hard jaw can clamp inner diameter and outer diameter of work.
- **Steel body**
Body is manufactured from high quality steel to increase rigidity, durability and rotational speed.



(Cross guide) (Old)

Dimensional Drawings



Dimensions

Type\Size	A	B	C (H6)	D	E	F	G	H	J	K	L	M	N	P
JN06T	165	65	130	147	45	5	3-M10	68	26	39	10	24	41	20
JN07T	190	75	155	172	55	5	3-M10	80	28	42	11	27.5	47.5	20
JN09T	232	84	190	210	70	6	3-M12	90	32	50	12	29.5	54.5	23
JN10T	273	86	230	250	85	6	3-M12	100	35	54	12	31.5	54.5	23
JN12T	310	96	260	285	96	7	3-M12	115	40	56	14	31.5	64.5	25

Specifications

Type	Spec.	Thru-Hole mm	Max. static gripping force kN(kgf)	Max. speed mm ⁻¹ (r.p.m)	Weight (with standard jaws) kg	Gripping range kg·m ²	Gripping range		Matching soft jaw (hard jaw)	Handle torque N·m(kgf·m)
							Outer dia.φmm	Inner dia.φmm		
JN06T		45	31.0(3161)	4000	9.0	0.033	3~160	55~150	SBS06(HBS06C)	88.3(9.0)
JN07T		55	31.0(3161)	3500	13.0	0.063	4~180	62~170	SBS07(HBS07C)	107.9(11.0)
JN09T		70	37.0(3773)	2900	22.0	0.163	5~220	70~210	SBS09(HBS09C)	147.0(15.0)
JN10T		85	46.0(4691)	2500	29.0	0.265	5~260	80~250	SBS10(HBS10C)	176.5(18.0)
JN12T		96	55.0(5608)	2200	43.0	0.588	10~300	90~290	SBS12(HBS12C)	206.0(21.0)

※For dimensions of soft jaws and hard jaws, refer to pages 87 and 88 on the catalog.
Since there are types mounted to the front side, please contact your agent if required.