



'TA2' / 'TA4' MINI UNIVERSAL RELAYS "PNEUMATIC"

OPERATION

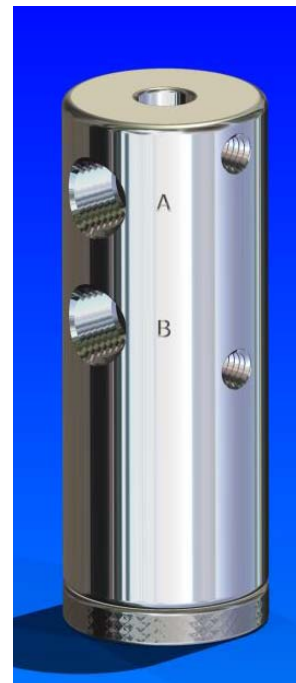
The BWB "TA" is a 2 way or 3 way, pilot operated, spring return, automatic relay with a threaded vent for dual pilot capabilities. It is normally installed inside a control panel and can be used in several different applications as detailed below:

3 Way Normally Open: Port A - Inlet Port C - Outlet Port B - Exhaust
When instrument pressure (Port P) is applied, it will automatically push the relay into the closed position. The inlet (Port A) is blocked and the outlet (Port C) is open to the exhaust (Port B). When instrument pressure is lost, the relay will automatically return to the open position. The inlet (Port A) is open to the outlet (Port C) and the exhaust (Port B) is blocked.

3 Way Normally Closed: Port B - Inlet Port C - Outlet Port A - Exhaust
When instrument pressure (Port P) is applied, it will automatically push the relay into the open position. The inlet (Port B) is open to the outlet (Port C) and the exhaust (Port A) is blocked. When instrument pressure (Port P) is lost, the relay will automatically return to the closed position. The outlet (Port C) is open to the exhaust (Port A) and the inlet (Port B) is blocked.

2 Way Normally Open: Port A - Inlet Port C - Outlet Port B - Plugged
When instrument pressure (Port P) is applied, it will automatically push the relay into the closed position. The inlet (Port A) and outlet (Port C) are blocked. When instrument pressure (Port P) is lost, the relay will automatically return to the open position. The inlet (Port A) is open to the outlet (Port C).

2 Way Normally Closed: Port B - Inlet Port C - Outlet Port A - Plugged
When instrument pressure (Port P) is applied, it will automatically push the relay to the open position. The inlet (Port B) is open to the outlet (Port C). When instrument pressure (Port P) is lost, the relay will automatically return to the closed position. The inlet (Port B) and outlet (Port C) are blocked.



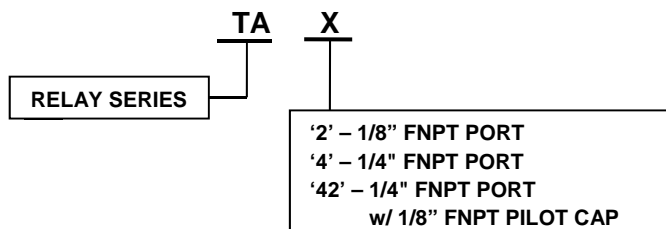
FEATURES

316 Stainless Steel Materials
150 PSI (10.34 bar) MAWP
Remove the spring for Dual Pilot Option

SERVICE CLASSIFICATION

STANDARD SERVICE: VITON O-RINGS
TEMPERATURE RANGE: -15 TO 250 °F (-26 TO 121 °C)
SPECIAL SERVICE: O RING COMPOUNDS AND MATERIALS TO CUSTOMER REQUIREMENTS

ORDERING INFORMATION



WEIGHTS

TA2 - 1.25 POUNDS
TA4 - 1.50 POUNDS
TA42 - 1.50 POUNDS



INSTALLATION



PORT 'A'

INLET OR EXHAUST
30 TO 150 PSI (2.06 TO 10.34 BAR)
NORMALLY OPEN
ORIFICE SIZE - .125" (3.15 MM)



PORT 'B'

INLET OR EXHAUST
30 TO 150 PSI (2.06 TO 10.34 BAR)
NORMALLY CLOSED
ORIFICE SIZE - .125" (3.15 MM)



PORT 'C'

SUPPLY PRESSURE OUTLET
ORIFICE SIZE - .125" (3.15 MM)



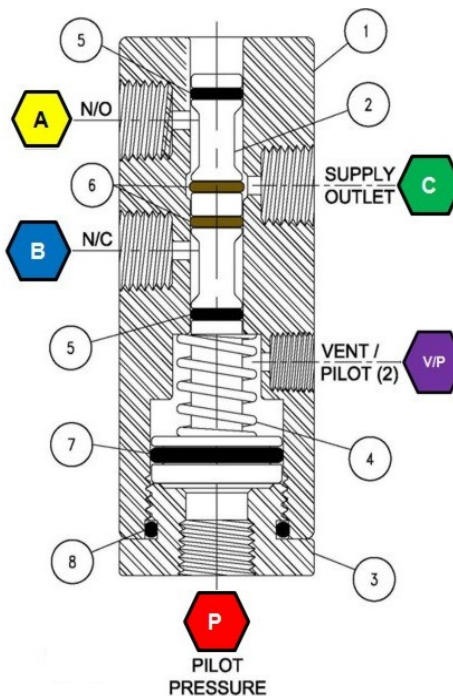
PORT 'P'

INSTRUMENT PRESSURE INLET
30 TO 150 PSI (2.06 TO 10.34 BAR)
ORIFICE SIZE - .328" (8.25 MM)



Port 'VP'

VENT OR 2ND PILOT
ORIFICE SIZE - .125" (3.15 MM)
REMOVE SPRING FOR DUAL PILOT OPTION



ITEM DESCRIPTION

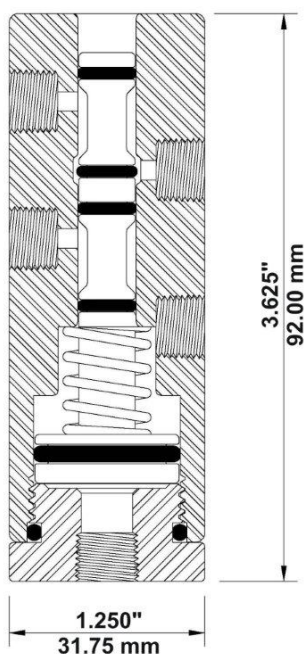
- | ITEM | DESCRIPTION |
|------|---------------|
| 1 | BODY |
| 2 | SPOOL |
| 3 | CAP |
| 4 | SPRING |
| 5 | O RING |
| 6 | O RING, BROWN |
| 7 | O RING |
| 8 | O RING |

REPAIR KIT(S):

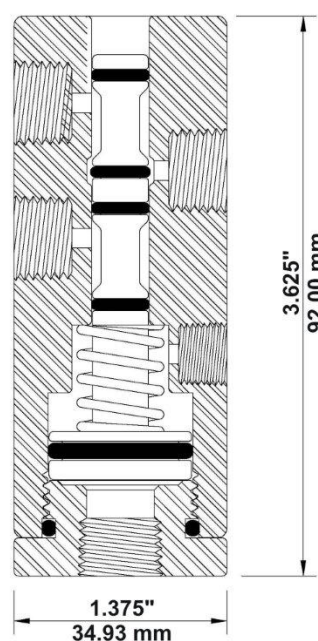
CONTAINS ALL SEALS
AND O RINGS

DIMENSIONS

TA2



TA4



Please note that Warranty and Repair Kit information on BWB Products are located on our website