

Pilot operated check, pilot to open Common cavity, Size 10

VSOA-10A

04.33.10 - X - 85 - Z

RE 18319-35

Edition: 05.2021

Replaces: 09.2019



Description

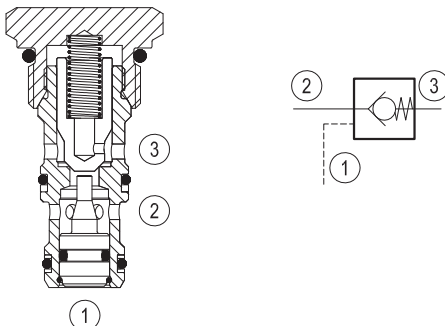
When pressure at 2 rises above the spring bias pressure, the poppet is pushed from its seat and flow is allowed from 2 to 3. The valve is normally closed (checked) from 3 to 2. When sufficient pilot pressure is present at port 1, the pilot piston acts to push the poppet from its seat and flow is allowed from 3 to 2. Precision machining and hardening processes allow virtually leak-free performance in the checked condition.

In case of valve application in redundancy systems it is especially recommended to use version with sealed pilot piston.

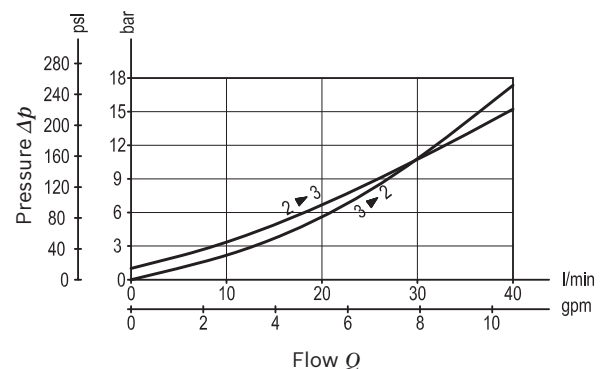
Technical data

Max. operating pressure	350 bar (5000 psi)
Max. flow	40 l/min. (11 gpm)
Pilot ratio	3:1
Max. internal leakage	5 drops/min.
Fluid temperature range	-30 to 100 °C (-22 to 212 °F)
Installation torque	41 - 47 Nm (30 - 35 ft-lbs)
Weight	0.11 kg (0.24 lbs)
Cavity	CA-10A-3N (see data sheet 18325-70)
Lines bodies and standard assemblies	Please refer to section "Hydraulic integrated circuit" or consult factory
Seal kit ¹⁾	Code: RG10A3010530100 material no: R930000990
Fluids	Mineral-based or synthetics with lubricating properties at viscosities of 5 to 800 mm²/s (cSt)
Recommended degree of fluid contamination	Nominal value max. 10µm (NAS 8) / ISO 4406 19/17/14
Installation position	No restrictions
Other Technical Data	See data sheet 18350-50

1) Only external seals for 10 valves



Characteristic curve



Ordering code

Ordering code							
04.33.10		X	85	Z	00	*	
Pilot operated check, pilot to open						Series 0/A to L unchanged performances and dimensions	
						Version and options standard	
O-Ring on pilot piston						SPRINGS	
						Cracking pressure bar (psi)	
00 No O-Ring						00	1 (15)
10 With O-Ring (only for Z=03 and Z=14)		03	3.5 (51)				
		14	14 (203)				
85 Common cavity, Size 10							

Preferred types

Type	Material number	Type	Material number
043310008500000	R901117416	043310108503000	R901117421
043310008503000	R901117420	043310108514000	R930000989
043310008514000	R930000988		

Dimensions

