

The XCK and XCR ranges of limit switches are based on Télémecanique series of operator heads and bodies and is equipped with Ex ed Technor contact block suitable for Zone 1 use. The products are well known around the world for their reliability, design and flexibility of application. The XCKW series are supplied with fitted cable gland for easy installation.

Specifications

Material (body)	Zinc alloy (ZP3 - Zamak)
IP rating	IP65
Operating temperature	-20°C to +60°C
Approvals	INERIS03ATEX0039X, INERIS03ATEX0038X IECEX INE 12.0030X, IECEX INE 12.0029X
Standards	EN/IEC: 60079-0, 60079-1, 60079-7, 60079-18, 60079-31
Ex codes	II 2 GD Ex d e IIC T6 Gb Ex tb IIIC T85°C Db
Contact block	NO + NC - 500 V, 3A



Gas and dust	For dust only	Contact block for the dust versions
XCKWMR54D1H29	XCKWMR54D1H29EX	Two 2-pole NC + NC staggered, slow break
XCKWMR54D2H29	XCKWMR54D2H29EX	
XCRAW111	XCRAW111EX	Two 2-pole NC + NO snap action contacts, both operate in each direction
XCRAW121	XCRAW121EX	
XCRAW151	XCRAW151EX	
XCREW181	XCREW181EX	
XCRBW111	XCRBW111EX	Two 2-pole NC + NO snap action contacts, 1 operates in each direction
XCRBW121	XCRBW121EX	
XCRBW151	XCRBW151EX	
XCRFW171	XCRFW171EX	
XCRTW115	XCRTW115EX	2 single pole OC, snap action contacts
XCRTW215	XCRTW215EX	
XCKWD2110P16	XCKWD3910P16EX	NC + NC + NO, snap action contacts
XCKWD2111P16	XCKWD3911P16EX	
XCKWD2102P16	XCKWD3902P16EX	
XCKWD2121P16	XCKWD3921P16EX	
XCKWD2127P16	XCKWD3927P16EX	
XCKWD2128P16	XCKWD3928P16EX	
XCKWD2118P16	XCKWD3918P16EX	
XCKWD2139P16	XCKWD3939P16EX	
XCKWD2145P16	XCKWD3945P16EX	
XCKWD2149P16	XCKWD3949P16EX	
XCKWD2106P16	XCKWD3906P16EX	
XCKWD21H0P16	XCKWD39H0P16EX	
XCKWD21H2P16	XCKWD39H2P16EX	
XCKWM2110H29	XCKWM3910H29EX	NC + NC + NO, snap action contacts
XCKWM2102H29	XCKWM3902H29EX	
XCKWM2121H29	XCKWM3921H29EX	
XCKWM2115H29	XCKWM3915H29EX	
XCKWM2106H29	XCKWM3906H29EX	NC + NC + NO, snap action contacts
XCKWJ2161H29	XCKWJ3961H29EX	
XCKWJ2167H29	XCKWJ3967H29EX	
XCKWJ210513H29	XCKWJ390513H29EX	
XCKWJ210511H29	XCKWJ390511H29EX	
XCKWJ210541H29	XCKWJ390541H29EX	
XCKWJ210559H29	XCKWJ390559H29EX	

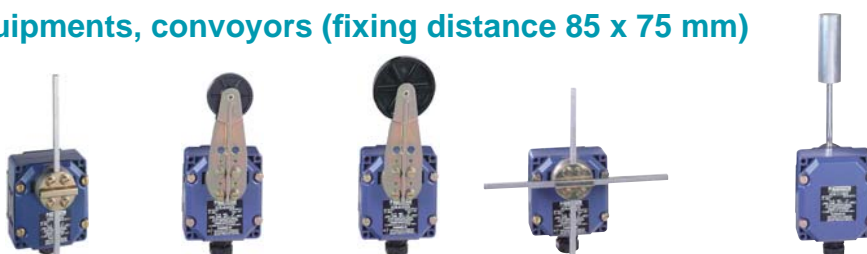
XCKWMR, for lifting equipments, conveyors, handling devices (fixing distance 61.5 mm)



Type of actuator	Metallic rods in cross	Metallic rods in cross, reversed head
Mechanical durability	2 million cycles	
Actuation speed	1.5 m/s	
Cable entry	3 entries ISO M20 (1)	
Two 2 pole NC+NC staggered, slow break	XCKWMR54D1H29	XCKWMR54D2H29

(1) 2 entries with blind plug, 1 entry with cable gland ISO M20 for cable Ø 8 to 13mm

XCRA/B/TW, for lifting equipments, conveyors (fixing distance 85 x 75 mm)



Type of actuator	Square rod 6mm spring return position	Thermoplastic roller lever Ø 30 mm	Thermoplastic roller lever Ø 50 mm	Metallic square rod in cross, stay put position	Conveyor belt shift monitoring Galvanized steel operating lever	Stainless steel operating lever
Mechanical durability	10 million cycles				0.3 million cycles	
Actuation speed	1.5 m/s					
Cable entry	1 entry ISO M20 for cable of Ø 8 to 13 mm					
Two 2-pole NC+NO snap action contacts, operate in each direction	XCRAW111	XCRAW121	XCRAW151	XCREW181 (2)		
1 contact "O + C" snap action in each direction	XCRBW111	XCRBW121	XCRBW151	XCRFW171 (3)		
2 contacts "O + C" snap action					XCRTW115	XCRTW215

(2) Metallic rods in cross

(3) Metallic rods in "T"

XCKWM, Classique range, fixing by the body (fixing distance 41 mm)



Type of actuator	Metal end plunger	Steel roller plunger	Thermoplastic roller lever, horizontal actuation	Thermoplastic roller lever	”Cat’s whisker”
Mechanical durability	20 million cycles				10 million cycles
Actuation speed	0.5 m/s		1.5 m/s		0.5 m/s
Cable entry	3 entries ISO M20 (1)				
Snap action contact “O+C”	XCKWM2110H29	XCKWM2102H29	XCKWM2121H29	XCKWM2115H29	XCKWM2106H29

(1) 2 entries with blind plug, 1 entry with cable gland ISO M20 for cable Ø 8 to 13mm

XCKWD, Compact range, fixing by the body (fixing distance 20 mm)



Type of actuator	Metal end plunger	Booted metal end plunger	Steel roller plunger	Thermoplastic roller lever, horizontal actuation	Thermoplastic roller lever, vertical actuation	Thermoplastic roller lever, vertical or horizontal actuation
Mechanical durability	15 million cycles		10 million cycles	15 million cycles		
Actuation speed	0.5 m/s			1 m/s		
Cable entry	1 entry M16 for cable Ø 5 to 8 mm					
Snap action contact NO+NC	XCKWD2110P16	XCKWD2111P16	XCKWD2102P16	XCKWD2121P16	XCKWD2127P16	XCKWD2128P16
Snap action contact NO+NO	XCKWD2910P16	XCKWD2911P16	XCKWD2902P16	XCKWD2921P16	XCKWD2927P16	XCKWD2928P16

XCKWD, Compact range, fixing by the body (fixing distance 20mm)

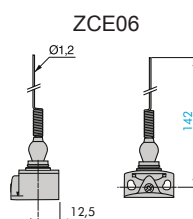


Type of actuator	Thermoplastic roller lever	Thermoplastic roller lever Ø 50 mm	Variable lenght thermoplastic roller lever	Variable lenght thermoplastic roller lever Ø 50 mm	”Cat’s wisker”	M18 head Metal end plunger	M18 steel roller end plunger
Mechanical durability	10 million cycles				5 million cycles	10 million cycles	
Actuation speed	1.5 m/s				1 m/s	0.5 m/s	
Cable entry	1 entry ISO M16 for cable Ø 5 to 8 mm						
Snap action contact NO+NC	XCKWD2118P16	XCKWD2139P16	XCKWD2145P16	XCKWD2149P16	XCKWD2106P16	XCKWD21H0P16	XCKWD21H2P16
Snap action contact NO+NO	XCKWD2918P16	XCKWD2939P16	XCKWD2945P16	XCKWD2949P16	XCKWD2906P16	XCKWD29H0P16	XCKWD29H2P16

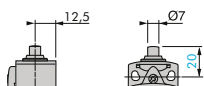
XCKWJ, Compact range, fixing by the body (fixing distance 30 x 60 mm)



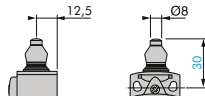
Type of actuator	Metal end plunger	Steel roller plunger	Steel roller lever	Thermoplastic roller lever	Variable length thermoplastic roller lever	Round rod lever Ø 6mm polyamide L= 200mm
Mechanical durability	30 million cycles	25 million cycles	30 million cycles		20 million cycles	
Actuation speed	0.5 m/s	1 m/s	1.5 m/s			
Cable entry	1 entry ISO M20 for cable Ø 8 to 13 mm					
Snap action contact Q+C	XCKWJ2161H29	XCKWJ2167H29	XCKWJ210513H29	XCKWJ210511H29	XCKWJ210541H29	XCKWJ210559H29



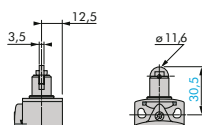
- ZCE10



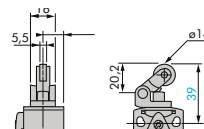
ZCE11



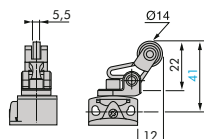
ZCE02



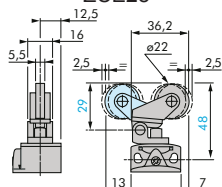
ZCE21



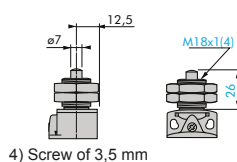
ZCE27



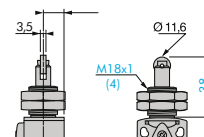
ZCE28



ZCEH0

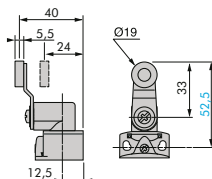


ZCEH2

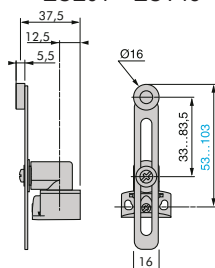


4) Screw of 3,5 mm

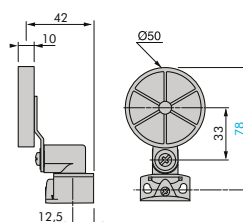
ZCE01 + ZCY18



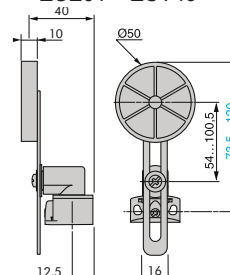
ZCE01 + ZCY45



ZCEH01 + ZCY39

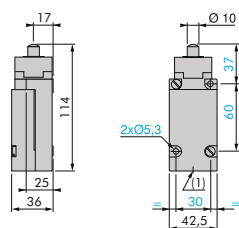


ZCE01 + ZCY49

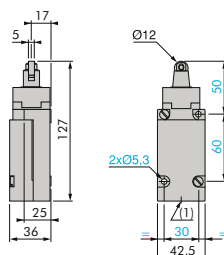


Classique range, XCKWJ (metal)

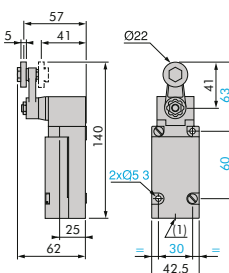
XCKWJ2161H29



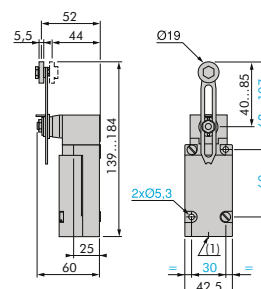
XCKWJ2167H29



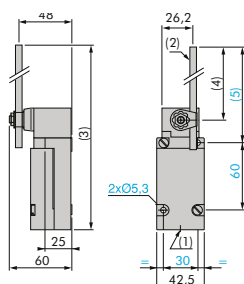
XCKWJ210513H29
XCKWJ210511H29



XCKWJ210541H2



XCKWJ210559H29



- 1) 1 entry ISO M20 x 1.5 for cable gland
2) Lever Ø 6 mm, length 120 mm
Ø 2 slotted holes 5.3 x 7.3 mm

XCKWMR54D1H29 / XCKWMR54D2H29

