

Relief, direct acting poppet type

Common cavity, Size 08

VSAN-08A

04.11.48 - X - 56 - Z

RE 18318-01

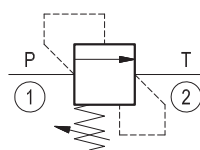
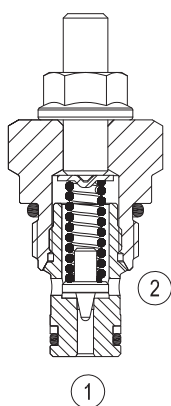
Edition: 01.2019

Replaces: 10.2016



Description

Flow is blocked from 1 to 2 until pressure increases to meet the selected valve setting, lifting the poppet from its seat and allowing relief flow through port 2 to tank. Pressure at port 2 is additive to the relief setting of the valve. The cartridge is especially suited for pilot or thermal relief applications.



Technical data

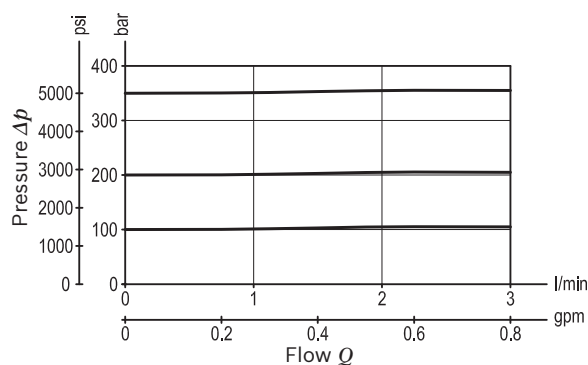
Max. operating pressure port 1 (P)	350 bar (5000 psi); for X=03 420 bar (6000 psi)
Max. pressure admitted port 2 (T)	140 bar (2000 psi)
Max. flow	3 l/min (0.8 gpm)
Max. internal leakage ¹⁾	15 drops/min.
Fluid temperature range	-30 to 100 °C (-22 to 212 °F)
Installation torque	34 - 41 Nm (25 - 30 ft-lbs)
Weight ²⁾	0.14 kg (0.31 lbs)
Cavity	CA-08A-2N (see data sheet 18325-70)
Lines bodies and standard assemblies	Please refer to section "Hydraulic integrated circuit" or consult factory
Seal kit ³⁾	Code: RG08A2010520100 material no: R901101437
Fluids	Mineral-based or synthetics with lubricating properties at viscosities of 10 to 500 mm ² /s (cSt)
Recommended degree of fluid contamination	Nominal value max. 10µm (NAS 8) / ISO 4406 20/18/15
Installation position	No restrictions
Other Technical Data	See data sheet 18350-50

1) Max. to 80% of nominal setting

2) Standard version X=03 type

3) Only external seals for 10 valves

Characteristic curve



Ordering code

04.11.48	X	56	Z	00	*
----------	---	----	---	----	---

Relief, direct acting poppet type

Series 0/A to L
unchanged performances and dimensions

Version and options standard

Adjustments

- 03 Leakproof hex. socket screw
- 04 Handknob and locknut
- 73 O-Ring seal on adjust screw

56 Common cavity, Size 08

		SPRINGS		
		Adj. press. range bar (psi)	Pressure increase bar/turn (psi/turn)	Std. setting bar (psi) cracking pressure
for X= 03	10	35-140 (500-2000)	48 (696)	100 (1450)
	20	105-210 (1500-3000)	88 (1276)	200 (2900)
	35	140-420 (2000-6000)	140 (2030)	350 (5000)
for X= 04	35	35-350 (500-5000)	68 (986)	350 (5000)
for X= 73	35	35-350 (500-5000)	68 (986)	350 (5000)

Note: Special settings available. Contact factory authorized representative for ordering code

Preferred types

Type	Material number
041148035610000	R901104094
041148035620000	R901104097
041148035635000	R901104099
041148045635000	R901104100

Type	Material number
041148735635000	R901161970

Dimensions

