

Directional control valves pneumatic operated poppet 2-way normally open Common cavity, Size 08

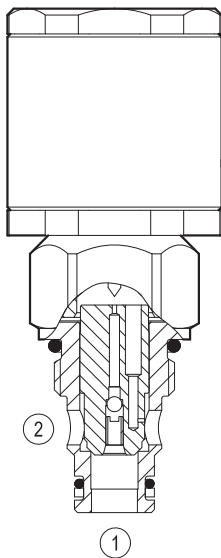
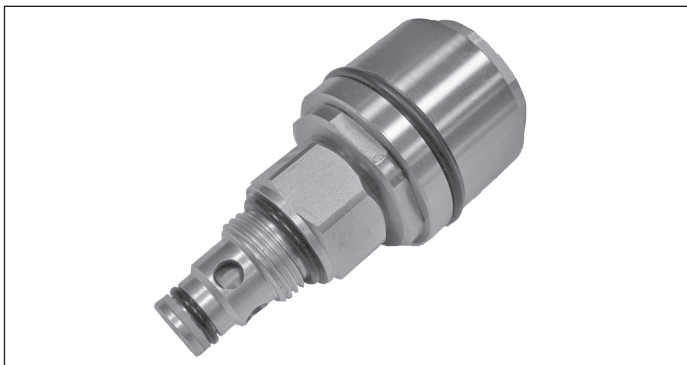
VPI-8A-2A-06-NA

OD.65 - X - 18.14.00

RE 18326-72

Edition: 01.2010

Replaces: 01.2006

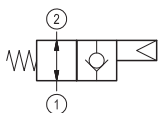


Technical data

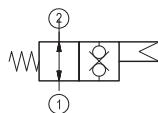
General	
Weight	0.27 kg (0.58 lbs)
Installation orientation	Optional
Ambient temperature range	-30 to 60 °C (-22 to 140 °F)
Hydraulic	
Max. operating pressure	350 bar (5000 psi)
Max. flow	40 bar (11 psi)
Max. internal leakage	20 drops/min.
Fluid temperature range	-20 to 80 °C (-4 to 176 °F)
Fluids: Mineral-based or synthetics with lubricating properties at viscosities of 20 to 380 mm²/s (cSt)	
Installation torque	39 - 51 Nm (29 - 38 ft-lbs)
Recommended degree of fluid contamination	Nominal value max. 25 µm (NAS 8) ISO 4406 19/17/14
Cavity	CA-08A-2N see 18325-70
Lines bodies and standard assemblies	Please refer to section "Hydraulic integrated circuit" or consult factory
Seal kit – version 06	code RG08A2010520100 material no. R901101437
Seal kit – version 32	code RG08A2010530100 material no. R901101544
Other technical data	See data sheet 18350-50

Pilot pressure	bar (psi)	Max. 15 (218)
	bar (psi)	Min. 4 (58)

▼ Version 06



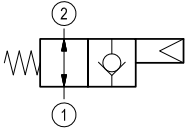
▼ Version 32



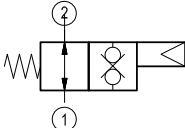
Ordering code

OD.65	X	18	14	00
-------	---	----	----	----

Directional control valves
pneumaticoperatedpoppet2-way
normally open



= 06



= 32

Common cavity: CA-08A-2N

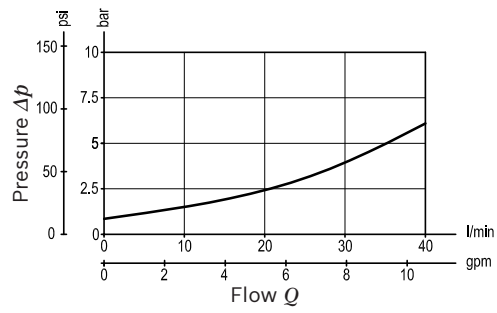
Preferred types

Type	Material number
OD650618140000	R901109464
OD653218140000	R901109466

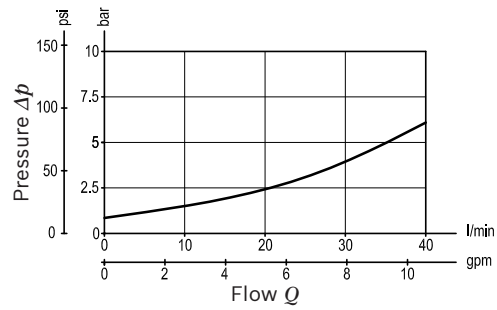
Type	Material number

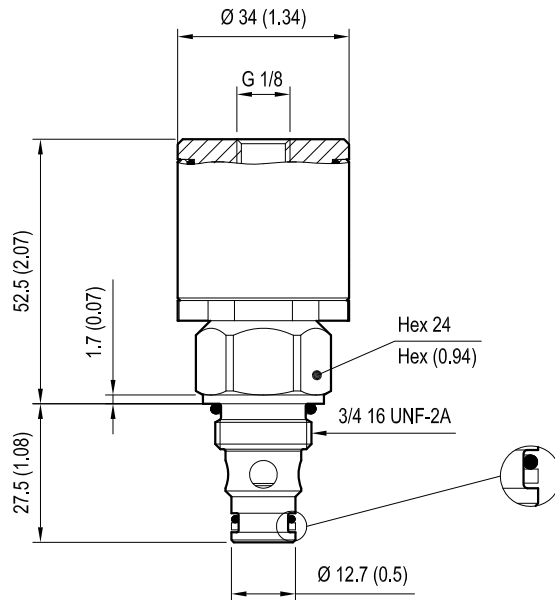
Characteristic curves

Version 06



Version 32



Dimensions**▼ Version 06: Directional control valves pneumatic operated poppet 2-way normally open****▼ Version 32: Directional control valves pneumatic operated poppet 2-way double lock normally open**