

Flow control, cartridge restrictor Common cavity, Size 16

ST-C-16

OD.21.01 - X - 75

RE 18321-29

Edition: 03.2016

Replaces: 02.2011



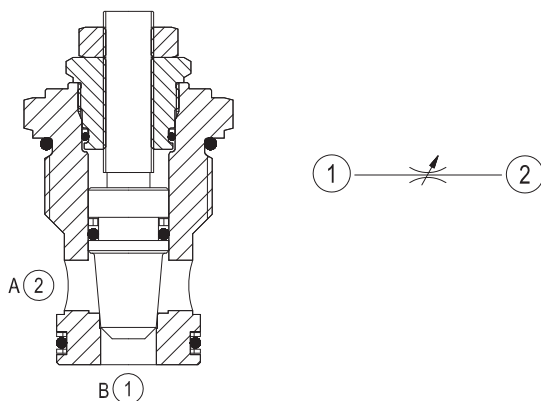
Description

Increasing the orifice value from fully closed to fully open, flow is permitted and regulated bi-directional from 1 to 2 and from 2 to 1. With valve fully closed no leakage permitted between ports 1 and 2.

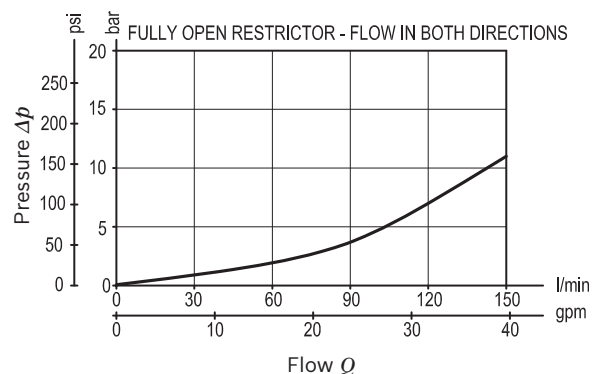
Technical data

Max. operating pressure	350 bar (5000 psi)
Rated flow	150 l/min. (39 gpm)
Fluid temperature range	-30 to 100 °C (-22 to 212 °F)
Installation torque	80 - 100 Nm (59 - 74 ft-lbs)
Weight	0.31 kg (0.68 lbs)
Cavity	CA-16A-2N (see data sheet 18325-70)
Lines bodies and standard assemblies	Please refer to section "Hydraulic integrated circuit" or consult factory
Seal kit ¹⁾	Code: RG16A2010530100 material no: R930003262
Fluids	Mineral-based or synthetics with lubricating properties at viscosities of 10 to 500 mm ² /s (cSt)
Recommended degree of fluid contamination	Nominal value max. 10µm (NAS 8) / ISO 4406 19/17/14
Installation	No restrictions
Other Technical Data	See data sheet 18350-50

1) Only external seals for 10 valves



Characteristic curve



Ordering code

OD.21.01	X	75	00	*
Flow control, cartridge restrictor				Series 0/A to L unchanged performances and dimensions
Adjustments				Version and options standard
03 Leakproof hex. socket screw				
04 Handknob and locknut				
75 Common cavity, Size 16				

Preferred types

Type	Material number	Type	Material number
OD210103750000	R901109837		
OD210104750000	R901109838		

Dimensions

