

Immersion Pumps

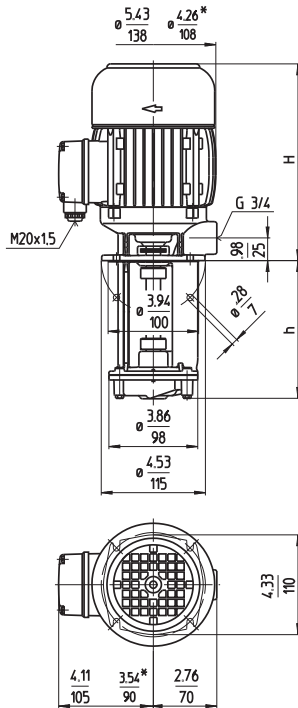
TS12...24

Peripheral impellers

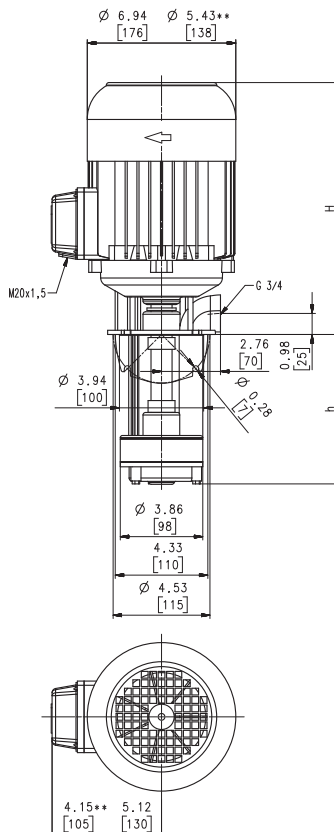


60 Hz

TS12, 13, 21, 22



TS15, TS24



Type	Flow at head		Height H inch mm	Depth of im- mersion		Weight		Power HP kW	Voltage 3 ~ V	Fre- quen- cy Hz	Current Speed	
	GPM /Feet l/min /m			h inch	h mm	Lbs	kg				AMPS	RPM
TS12S110	5/45	7.0	4.33	110	11.9	5.4	0.36	208-230	60	1.26	3300	
	20/14	178					0.27	460	60	0.63	3300	
	150		5.91	150	12.3	5.6						
	190		7.48	190	13.2	6.0						
	250		9.84	250	14.3	6.5						
TS13S110	5/74	8.3	4.33	110	14.3	6.5	0.54	208-230	60	1.8	3200	
	20/23	211					0.4	460	60	0.9	3200	
	150		5.91	150	15.0	6.8						
	190		7.48	190	15.9	7.2						
	250		9.84	250	16.5	7.5						
TS15S190	5/125	11.2	7.48	190	27.6	12.5	1.7	230	60	4.8	3440	
	20/35	285					1.27	460	60	2.4	3440	
	220		8.66	220	28.7	13.0						
	TS21S110	5/90	10.2	4.33	110	21.4	9.7	1.15	230	60	3.70	3440
	20/27	258					0.86	460	60	1.85	3440	
TS22S110	5/125	11.2	4.33	110	26.0	11.8	1.7	230	60	4.8	3440	
	20/38	285					1.27	460	60	2.4	3440	
	150		5.91	150	26.9	12.2						
	190		7.48	190	27.6	12.5						
	250		9.84	250	28.7	13.0						
TS24S140	5/125	11.2	4.33	110	26.0	11.8	1.7	230	60	4.8	3440	
	20/38	285					1.27	460	60	2.4	3440	
	150		5.91	150	26.9	12.2						
	190		7.48	190	27.6	12.5						
	250		9.84	250	28.7	13.0						
TS24S140	10/124	14.2	5.51	140	57.3	26	2.9	230	60	7.8	3500	
	40/36	360					2.18	460	60	3.9	3500	
	180		7.09	180	59.5	27						
	220		8.66	220	61.7	28						

Dimensions in Inches / mm

*) Dimensions TS12, 13

**) Dimensions TS15


60 Hz

Immersion Pumps

models **TS12 to TS24** are suitable for **CNC machine tools** featuring coolant supply through the tool holder or driving spindle. The TS series is also used for machines equipped with internally cooled tools. TS pumps are equipped with a peripheral impeller to achieve a compact high pressure unit.

Series TS are suitable for filtered coolant only.

To reduce pump pressure, model TS22 to TS24 is also available with an optional Y/YY (Dahlander) motor configuration for 4 pole operation at half speed.



Special versions of the pumps can be supplied for use with temperature controlling systems carrying thermal oils of up to 300 °F (150 °C) resp. 390 °F (200 °C).



Applications

Types of fluid

coolants
cooling/cutting oils

Kinematic viscosity

...200 SSU (...45 mm²/s)

Pumping temperature

30...175 °F (0...80 °C)

300 °F (150 °C) as special make

Construction

Pump body cast iron

Cover cast iron

Impellers brass

Shaft steel

Optional:

Pump body bronze (TS12...TS13, TS21...TS22)

Cover bronze (TS12...TS13, TS21...TS22)

Impellers CrNi-steel (TS12...TS22)

Noise level (Motor only; Tolerance +3 dBA)

TS12...TS13 61 dBA

TS15...TS22 68 dBA

TS24 74 dBA

