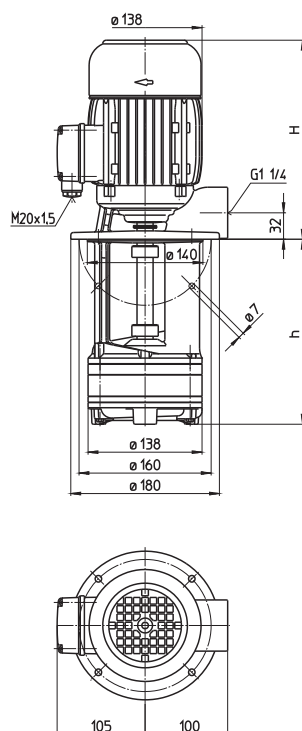


Immersion Pumps

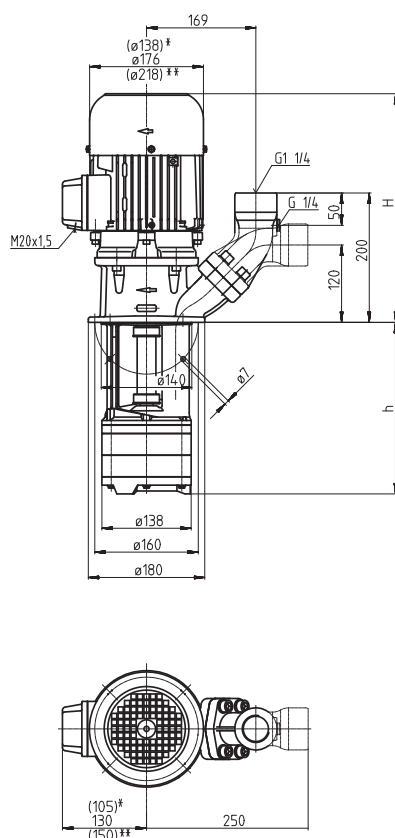
TE/STE141...146

Semi-open impellers

TE141, 142



STE141...146



*) Dimensions for STE141, 142
**) Dimensions for STE146

Type	Vol. del. at manom. del. head l/min / m	Height H mm	Depth of im- mersion h mm	Weight kg	Power kW	Voltage 3 ~ V	Fre- quen- cy Hz	Current A	Speed 1/min
TE141/200	80/9	264	200	15.0	0.63	220-240	50	2.70	2850
270			270	16.0		380-415	50	1.56	2850
350			350	17.0					
440			440	18.5	0.725	460	60	1.46	3425
550			550	20.0					
TE142/150	80/20	291	150	16.5	1.1	220-240	50	4.33	2850
230			230	18.0		380-415	50	2.50	2850
300			300	18.5					
380			380	19.5	1.27	460	60	2.4	3440
470			470	21.0					
580			580	23.0					
STE141/120	80/9	334	120	19.0	0.63	220-240	50	2.70	2850
200			200	20.0		380-415	50	1.56	2850
270			270	21.0					
350			350	22.0	0.725	460	60	1.46	3425
440			440	23.5					
550			550	25.0					
STE142/150	80/20	361	150	21.5	1.1	220-240	50	4.33	2850
230			230	23.0		380-415	50	2.50	2850
300			300	23.5					
380			380	24.5	1.27	460	60	2.4	3440
470			470	26.0					
580			580	28.0					
STE143/190	80/33	406	185	32	1.7	220-240	50	6.24	2890
270			265	33		380-415	50	3.60	2890
340			335	34					
420			415	35	1.95	460	60	3.5	3480
510			505	36					
620			615	38					
STE144/220	80/45	439	220	36	2.2	220-240	50	7.8	2890
300			300	37		380-415	50	4.5	2890
370			370	38					
450			450	39	2.55	460	60	4.4	3480
540			540	41					
650			650	42					
STE145/270	80/56	439	270	40	2.6	220-240	50	9.30	2880
350			350	41		380-415	50	5.35	2880
420			420	42					
500			500	43	2.94	460	60	5.1	3480
590			590	44					
700			700	46					
STE146/300	80/70	478	305	52	4.0	220-240	50	14.50	2920
380			385	53		380-415	50	8.35	2920
450			455	54					
530			535	55	4.55	460	60	7.9	3520

Immersion Pumps

are plain centrifugal pumps with the impeller fitted on the driving shaft extension. They are mounted on top of the container, the pump extension being immersed in the coolant.

The dimensions are based on standard specification **EN 12157**.

The maximum coolant level must stay a few mm/inches below the mounting flange.

The STE series offers a **(SAE) flange** with pressure gauge connection port.

The flange can be rotated for either horizontal or vertical pipe connections.



All types are also available as quick-suctioning immersion pumps equipped with "BRINKMANN's Suction De-aeration System". See series TL/STL.

Applications

Types of fluid
coolants
cooling/cutting oils
Kinematic viscosity
...45 mm²/s (45 cSt)
Pumping temperature
0...60° C

Construction

Pump body
Cover
Impellers
Shaft
steel

Optional:
Cover
cast iron (TE141, STE141)

Suction cover
Impellers
brass

Other materials
cast steel
on request

Noise level

TE141...STE142 60 dBA
STE143...STE145 68 dBA
STE146 73 dBA

