

Replaces: RE 18332-44/12.09

OL - K - Y - Z - W - 00

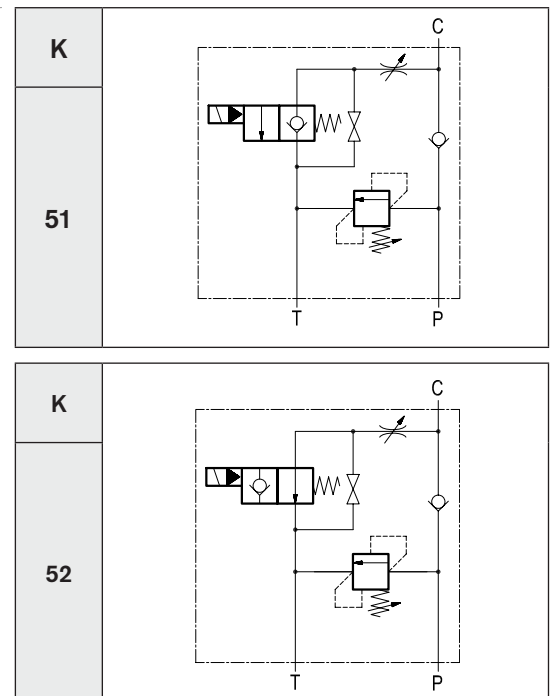
Technical drawing of the VS-30 valve assembly, showing two views: a top view and a side view.

Top View Dimensions:

- Overall width: 97 (3.82)
- Overall height: 55 (2.17)
- Port C diameter: Ø6.5 (0.26)
- Port P diameter: Ø11 (0.43)
- Port T diameter: Ø6.5 (0.26)
- Mounting bracket: VEI-8A
- Valve body: VS-30
- Reference: see next page

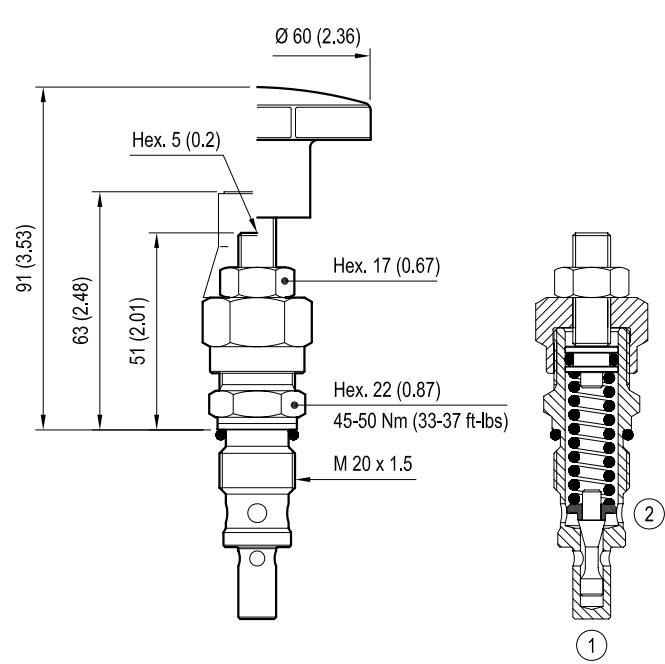
Side View Dimensions:

- Overall height: 70 (2.76)
- Port C diameter: Ø6.5 (0.26)
- Port P diameter: Ø11 (0.43)
- Port T diameter: Ø6.5 (0.26)
- Mounting bracket: VEI-8A
- Valve body: VS-30
- Reference: see next page



These integrated circuit contains one relief valve type VS-30 operating from P to T and one solenoid valve type VEI-8A (see next page).

VS30 Cartridge valve (code 04.11.18.X.99.Z)

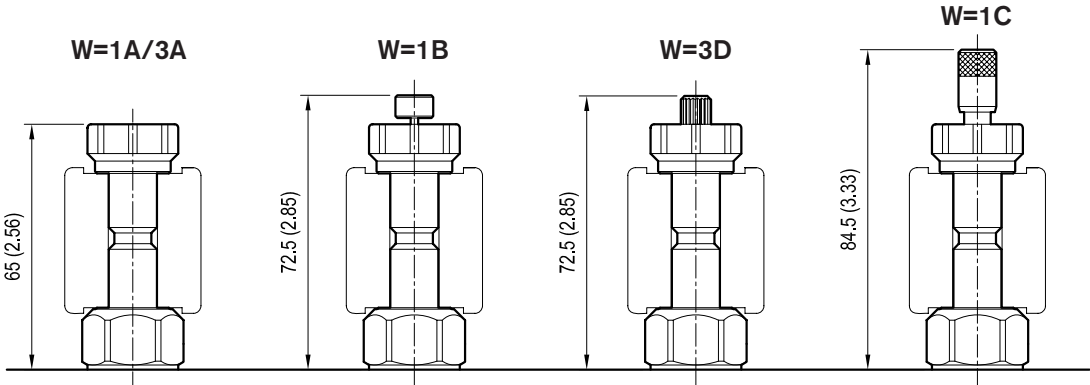


Z		VS-30 SETTING		
		Adj. pressure range bar (psi)	Press. increase bar/turn (psi/turn)	Std. setting bar (psi) (Q=5 l/min)
	04	30-100 (435-1450)	24 (348)	100 (1450)
	07	50-210 (725-3000)	47 (682)	200 (2900)
	10	100-350 (1450-5000)	82 (1189)	350 (5000)
	05	30-100 (435-1450)	24 (348)	100 (1450)
	08	50-210 (725-3000)	47 (682)	200 (2900)
	11	100-350 (1450-5000)	82 (1189)	350 (5000)

ADJUSTMENTS		OPTIONS
Leakproof hex. socket screw		 Tamper resistant cap 11.04.23.003
Handknob and locknut		

VS-30 TECHNICAL DATA
See table "Z", for other details see data sheet RE 18318-23

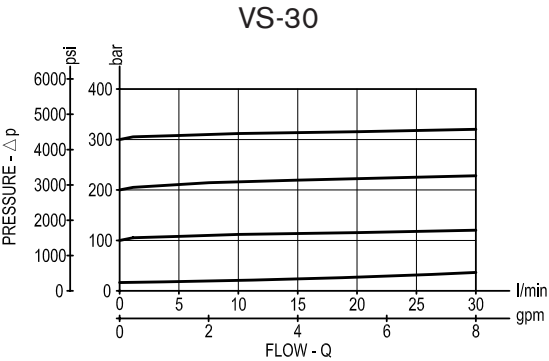
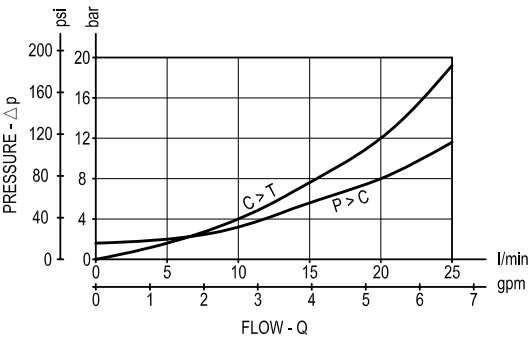
VEI-8A Solenoid cartridge valve (code OD.15.K.18...)



mm (inches)

W	MANUAL OVERRIDE OPTIONS		VEI-8A TECHNICAL DATA	
	K = 51	K = 52		
1A	/	No override	Internal leakage:	max. 1 cm³/min (0.06 inch³/min)
1B	/	Push style	Filtration:	25 µm nominal or better
1C	/	Push and twist style	Minimum voltage required:	90% of nominal value
3A	No override	/	Coil:	S8-356 (must be ordered separately) (see data sheet RE 18325-90)
3D	Knob style	/	For other details see cartridge data sheet	

Performance graphs



Ordering code

OL		K	Y	Z	W	00
<div>Solenoid operated valves standard integrated circuits for single-acting cylinder</div>						
<div>Hydraulic schemes (see page 1)</div>						<div>Manual override options (see table on page 2)</div>
Port sizes	P - T - C					
= 09	G 1/4					
= 02	G 3/8					
= 03	G 1/2					
				<div>VS-30 setting (see table on page 2)</div>		

Preferred types (readily available)

Type	Material number	Type	Material number
OL5109043A0000	R934002639	OL5202071A0000	R934002640
OL5109073A0000	R934003305	OL5202101A0000	R934002641
OL5109103A0000	R934003306	OL5203071A0000	R934002642
OL5102043A0000	R934002611	OL5203071B0000	R934002643
OL5102073A0000	R934002612		
OL5102073D0000	R934003793		
OL5102083A0000	R934000442		
OL5102103A0000	R934000505		
OL5103043A0000	R934002619		
OL5103073A0000	R934002620		
OL5103073B0000	R934002623		
OL5103073D0000	R934002625		
OL5103103A0000	R934002627		
OL5103103B0000	R934002628		
OL5103103D0000	R934003304		

Further types available by request