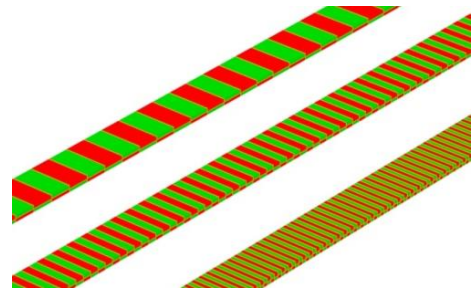


Datasheet



- Insensitive to oil, humidity, dust and shavings
- Wear free
- Very precise
- Cost-effective solution
- Variable lengths
- Easy mounting
(easy mounting with already attached double sided adhesive tape)



Mechanical Data

Dimensions			
Width	magnetic scale	10 mm +0,2	
Thickness	magnetic scale	1,55 mm ±0,1	
	cover tape	DB01: 0,15 mm / DB20: 0,15 mm / DB50: 0,45 mm	
Length		ca. < 48 m	
Material			
	magnetic scale	plastic with Barium-Strontium Particles; stainless steel	
	cover tape	Stainless steel	
	rail	Aluminium	
Weight			
	magnetic scale	70 g/m	
	cover tape	25 g/m	
Pole Pitch [mm]		1+1	2+2
Accuracy		3; 5; 8; 10; 18 µm	30; 15 µm
Cover Tape		DB01 / DB20	DB50 / DB20
Temperature Coefficient		11± µm/K	
Magnetic Remanence		> 240 mT	
Reference Point		on specification	
Operating Temperature		-40 °C to +80 °C	
IP-Rating		IP67	
Accessories			
Rail		PS1, PS5, PS6, SB	

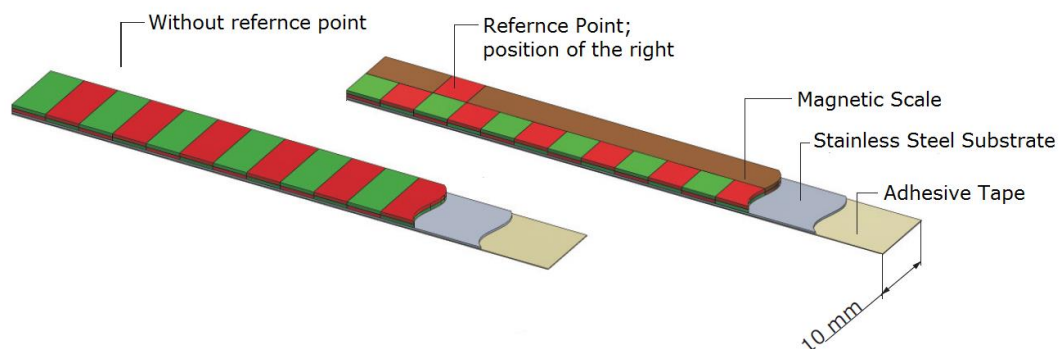
Sample Applications

vertical montage with Rail PS1	montage with rail PS6 and cover tape DB20	montage with rail SB

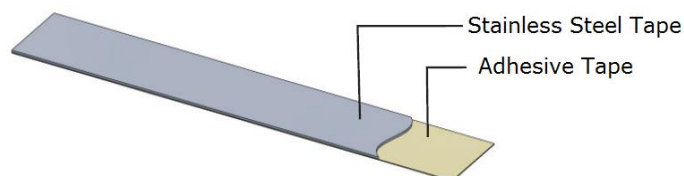
Datasheet

Dimensions

Magnetic Scale

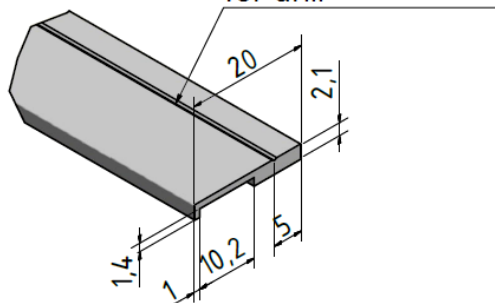


Cover Tape

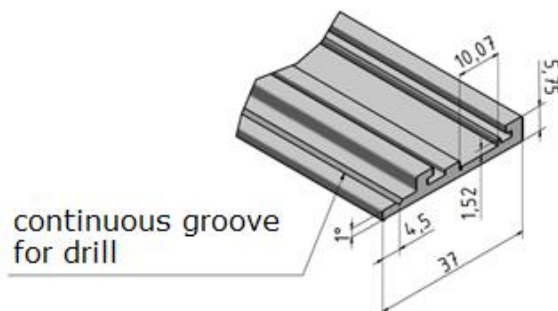


Rail

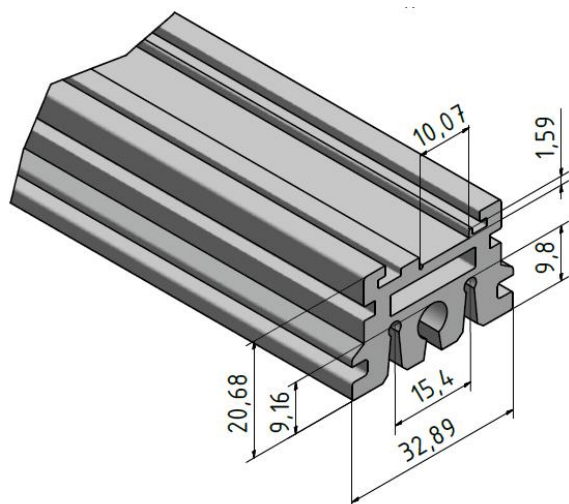
PS1
continuous groove
for drill



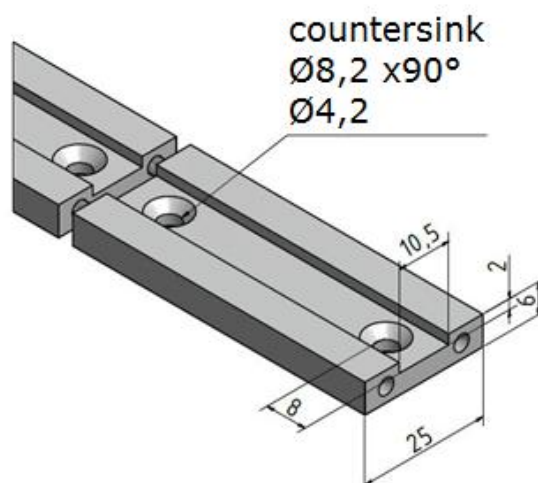
PS5



PS6



SB





Datasheet

Ordering Example

Magnetic Scale

Type	PM1	-	18	-	1000	-	0	-	DB01
Pole Pitch [mm]	1; 2; 5								
Accuracy	3 = 3 µm (max. 1000 mm) 5 = 5 µm 8 = 8 µm 10 = 10 µm 15 = 15 µm 18 = 18 µm 30 = 30 µm 36 = 36 µm								
Measuring Length	The entered amount should be on each side 40 mm longer than the desired measuring length Length in mm for PM1; PM2 Length in m for PM5								
Reference Point [mm]	0 = without S50 = fix; Specifying position of the right SA50 = periodically; Specifying position of the right								
Cover Tape	0 = without DB01 = for PM1 and PM2 DB50 = for PM5 DB20 = with Rail PS5; PS6								

Rail

Type	PS1	-	1,0
PS1	= Pole Pitch > 5+5 mm		
PS5	= incl. cover tape DB20		
PS6	= incl. cover tape DB20		
SB	=		
Measuring Length [m]			

Cover Tape (for a later ordering)

Type	DB01	-	1,0
DB01	= for PM1 and PM2		
DB20	= for PS5 and PS6		
DB50	= for PM5		
Measuring Length [m]			