

MIX

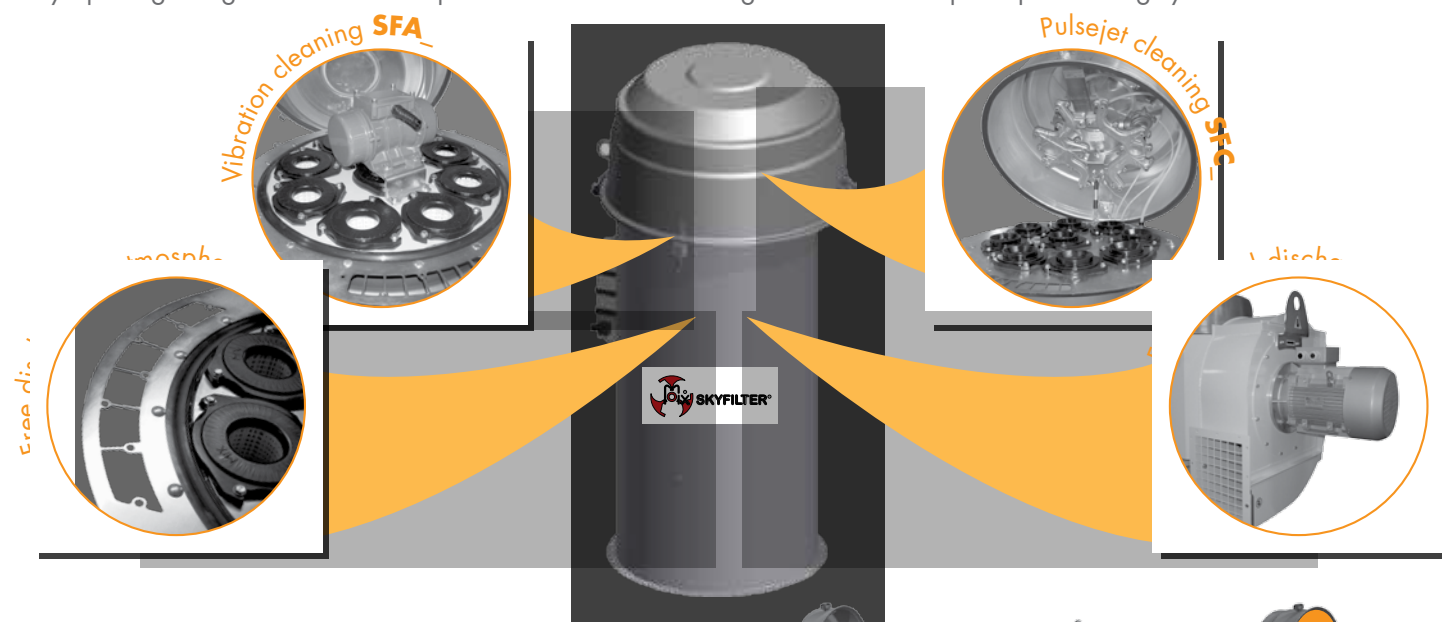


INDIA



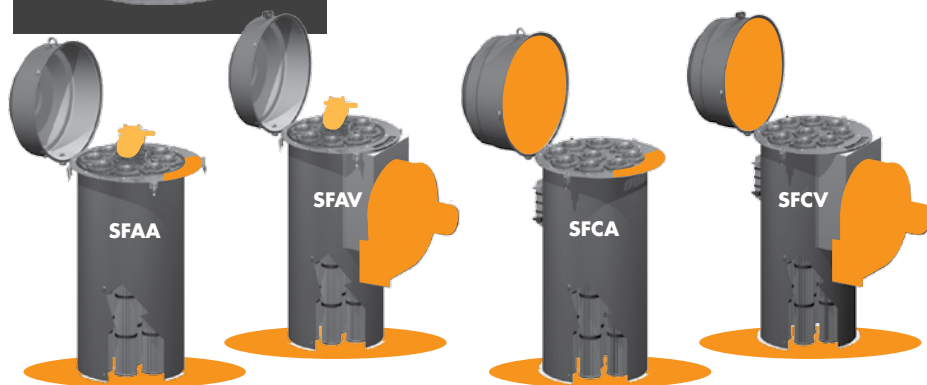
***“Italian Technology,
Indian Josh”***

MIX has newly designed a complete series of compact filters with a round housing design and a bigger filtering surface, the easy opening design of the cover helps the access to the filtering units and to the pulse jet cleaning system.

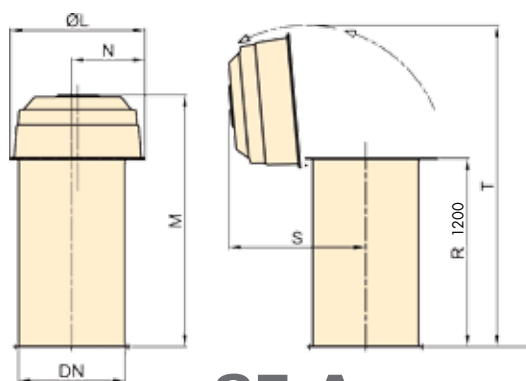


Filter Series SFA., easy access for cartridge extraction from the top side, vibration cleaning, free discharge in atmosphere (SFAA) or fan assisted (SFAV)

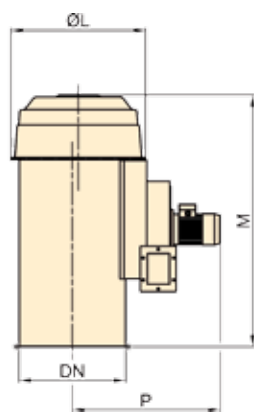
Filter Series SFC., easy access for cartridge extraction from the top side, pulse jet cleaning, free discharge in atmosphere (SFCA) or fan assisted (SFCV)



TYPE	kg	TYPE	kg	m ²	DN	ØL	M	N	P	S	T	kW
SFAA200..LP	51	SFAV200..LP	101	20	540	685	1435	345	805	850	1880	2,2
SFAA270..LP	51	SFAV270..LP	119	27	540	685	1435	345	855	850	1880	3
SFCA180..L	51	SFCV180..L	101	18	540	685	1525	345	805	695	1880	2,2
SFCA200..L	54	SFCV200..L	104	20	540	685	1525	345	805	695	1880	2,2
SFCA240..L	51	SFCV240..L	119	24	540	685	1525	345	855	695	1880	3
SFCA270..L	54	SFCV270..L	122	27	540	685	1525	345	855	695	1880	3
SFCA350..L	107	SFCV350..L	190	35	790	965	1500	525	1035	825	2145	4
SFCA440..L	117	SFCV440..L	228	44	790	965	1500	525	1205	825	2145	5,5
SFCA480..L	107	SFCV480..L	225	48	790	965	1500	525	1245	825	2145	7,5
SFCA600..L	117	SFCV600..L	325	60	790	965	1500	525	1290	825	2145	11



SF_A

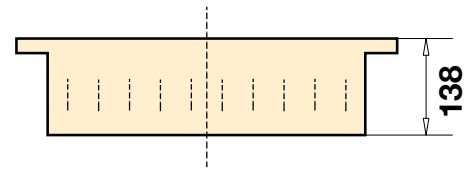
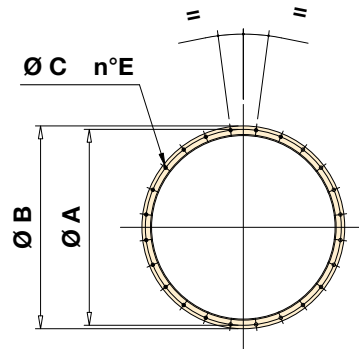


SF_V

Filter base

SFS

The standard filter base for the installation of MIX filters on silos/storage containers alike



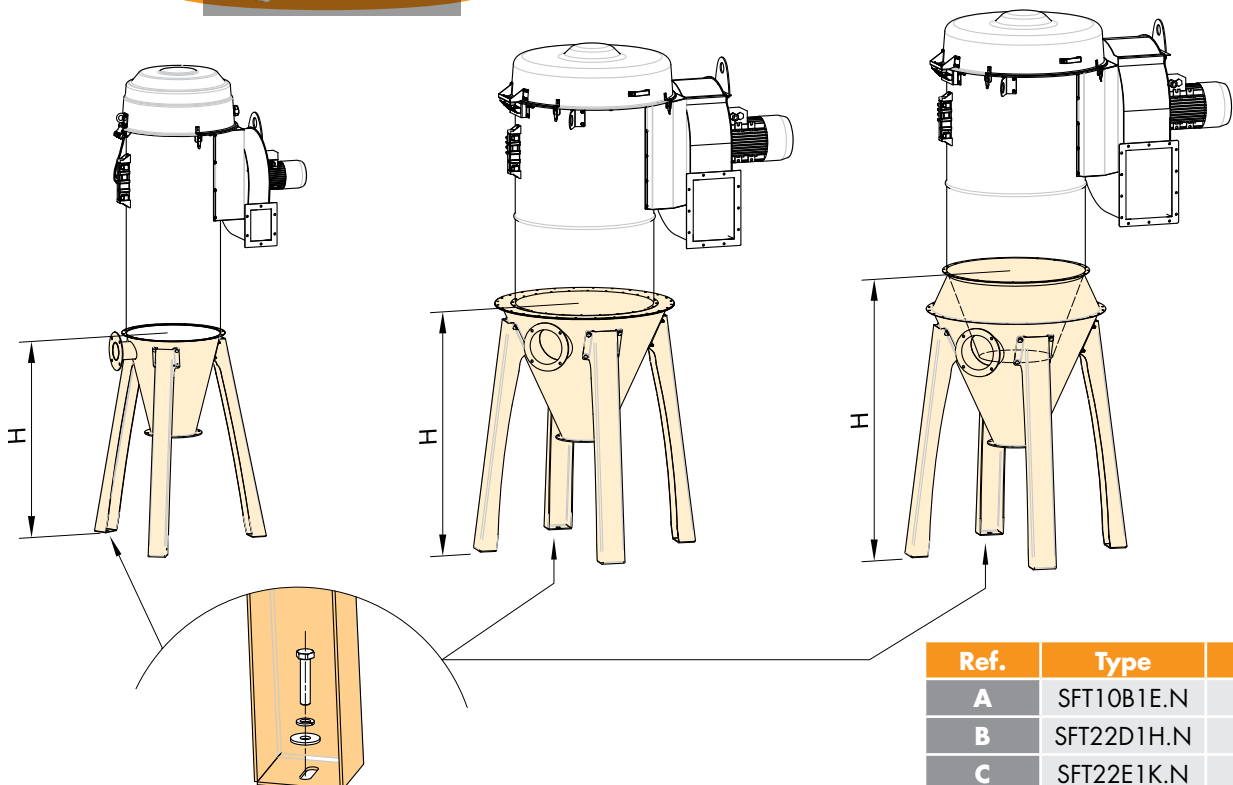
DN	ØA	ØB	ØC	n°E
540	570	590	9	16
790	820	840	9	24

SFT

The pre-separating hopper is designed for direct mounting of the filter above and generally comes with three inlets, a flanged discharge cone suitable for mounting a butterfly valve. Generally supplied with a tripod leg arrangement; it is normally used in conjunction with a mobile dust collection tank but can be just as easily supplied with a simple butterfly valve and its relative sleeve.



FILTER	HOPPER		
	SFT10B1E.N	SFT22D1H.N	SFT22E1K.N
SFAA270.	✓		
SFCA240.	✓		
SFCA270.	✓		
SFCA480.		✓	
SFCA600.			✓

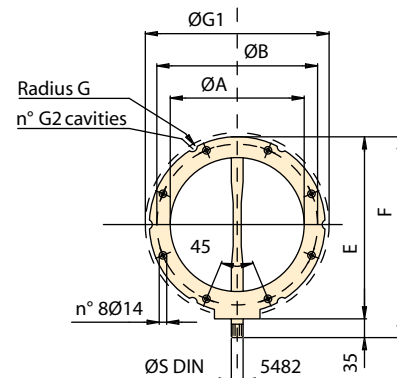
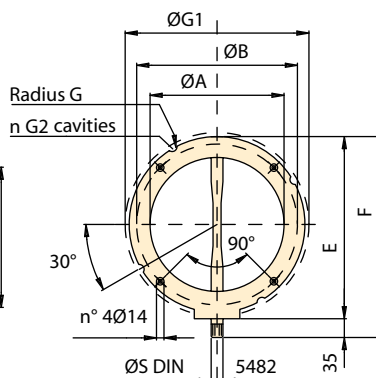
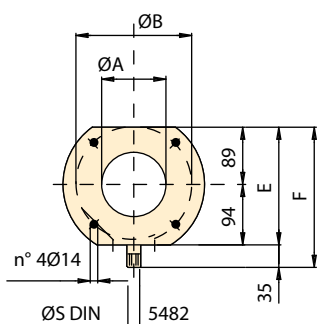
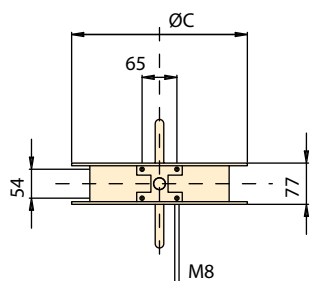
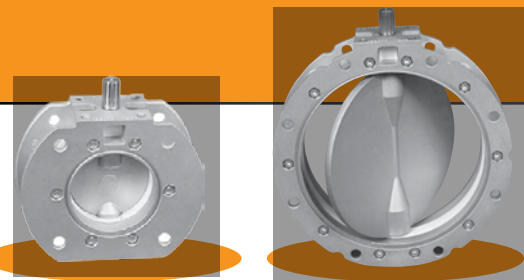


Ref.	Type	H (mm)
A	SFT10B1E.N	1207
B	SFT22D1H.N	1408
C	SFT22E1K.N	1628

Butterfly valve

SVA

MIX have produced a range of inexpensive Butterfly Valves, which are robust, and simple to operate. Available in a series of diameters from DN100 to DN400, these double flanged butterfly valves are for installation in the flow of a product. An optional spigot flange (SFU) can be supplied if the connection of a flexible sleeve is required. Butterfly valves SVA are specifically designed to regulate the flow of powder, granular, fluid based products.



Inch	mm	TYPE	FIG.	A	B	C	E	F	Radius G	G1	G2	PN	ND	S	Kg
4"	100	SVA100C2...	5	100	180	220	183	218	/	/	/	PN10	ND10	22x19	4,5
6"	150	SVA150C2...	1	150	200	228	233	268	9	225	4	PN6	ND6	22x19	5
8"	200	SVA200C2...	1	200	250	278	282	317	9	280	4	PN6	ND6	22x19	7
10"	250	SVA250C2...	2	250	300	328	332	367	9	335	6	PN6	ND6	22x19	8
12"	300	SVA300C2...	2	300	350	378	382	417	11	395	6	PN6	ND6	22x19	11

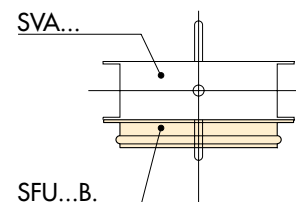
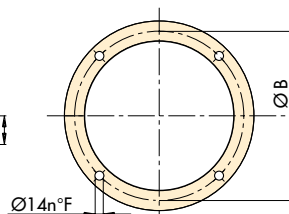
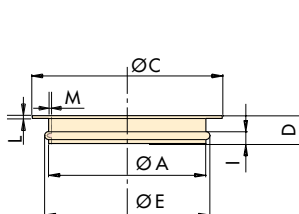
Other versions on request

Spigot flange

SFU

Sleeve for flexible connection

Inch	Type	ØA	ØB	ØC	D	Ø E	ØF	I	L	M	Kg
4"	SFU100B8	110	180	220	48	125	4	12	2,5	2,5	0,5
6"	SFU150B8	164	200	228	48	156	4	12	2,5	2,5	0,5
8"	SFU200B8	210	250	275	48	206	4	12	2,5	2,5	0,7
10"	SFU250B8	265	300	325	48	256	8	12	2,5	2,5	1,1
12"	SFU300B8	315	350	375	48	306	8	12	2,5	2,5	1,3



Actuators

RAB - RAP - RAM

Geared Motor actuator RAM: on request

Manual Handle actuator

RAB: is suitable for the connection to the butterfly valves splined drive shaft DIN 5482. The handle can be manually locked in any position throughout a maximum operating range of 90° (fully open to closed). Mild steel handle with rubber sleeve.

Pneumatic actuator RAP

(double effect): can be supplied suitable for connection to either the splined drive shaft DIN 5482 or the plain drive shaft ISO 5211 of the butterfly valves. Many combinations of limit switches / electro-valve / solenoids are available. The pneumatic actuator has an operating pressure of 6 bar. Protection IP 56.



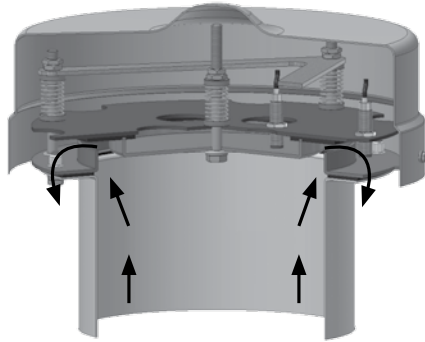
Pressure relief valve

SSM

The MIX pressure relief valve equalizes pressure in the vessel, relieving either positive or negative pressure. This reduces the risk of damage to the vessel and any ancillary equipment fitted to it. The valve can be fitted with inductive switches which will signal the plant operator if pressure is unequal.

The valve can be set up to meet individual requirements and is suitable for a wide range of applications. The valve is used to protect silos, hoppers and ancillary equipment from over- or under-pressure, which if left unchecked could seriously damage the equipment.

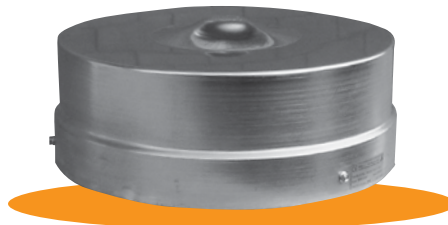
Working overpressure



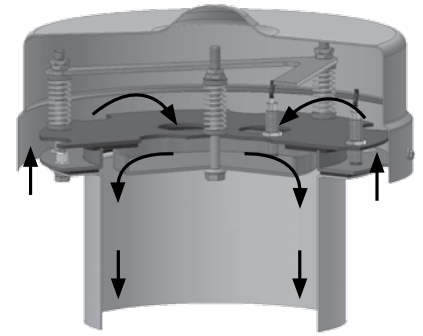
A ± 60 mm H₂O
B ± 50 mm H₂O
C ± 70 mm H₂O

Working tolerance

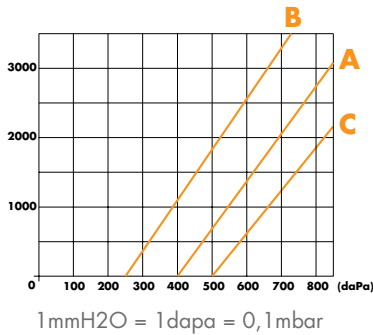
A ± 30 mm H₂O
B ± 20 mm H₂O
C ± 50 mm H₂O



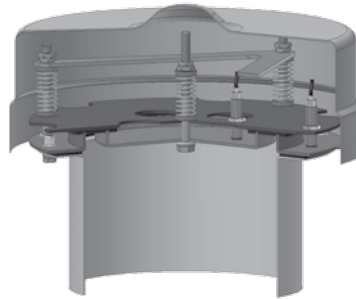
Working underpressure



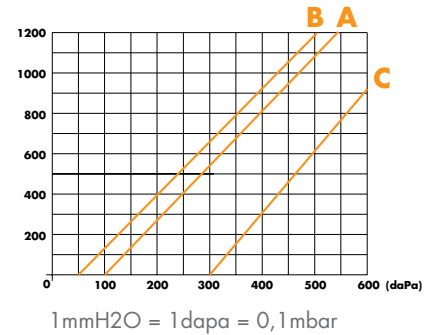
Working over pressure range of +250 to +500 mm H₂O Factory set at +400 mm H₂O



Valve at rest

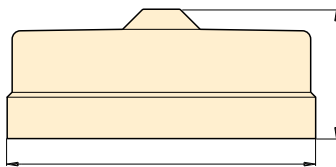


Working under pressure range of -50 to -300 mm H₂O Factory set at -100 mm H₂O

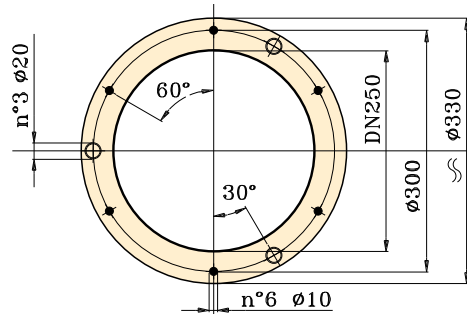
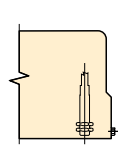


A = Standard supply calibration - **B = Minimum calibration** - **C = Maximum calibration**

SSM250K.



SSM250L.



TYPE	MATERIAL	A	ØB	Kg
SSM250K1	Carbon Steel	156	372	7

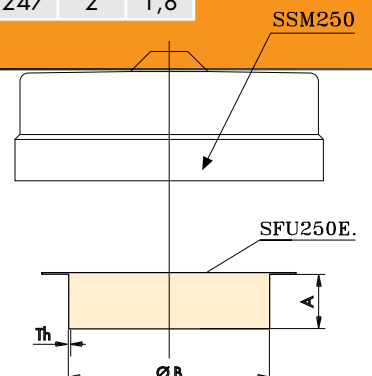
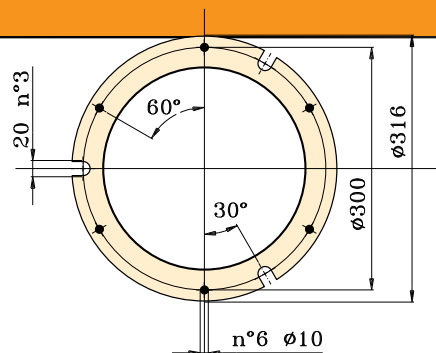
Base spigot

SFU

The base spigot can be welded on the tank or other equipment. The pressure relief valve SSM250 is bolted on the base spigot. Available in mild steel.



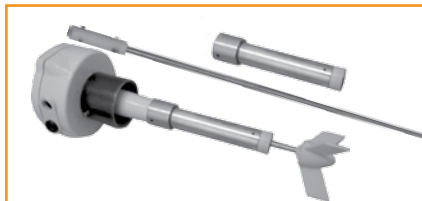
TYPE	MATERIAL	A	ØB	Th	Kg
SFU250E	Carbon steel	150	247	2	1,8



Level indicator

SH.

The level gauges, with electromechanical working, are components signalling the presence / absence of dusty or granulate products in plants of every field of application. They are built in tight aluminium casting with seal cover (IP65 protection), dust painted and oven dried. They feature stainless shaft on ball bearings and permanent lubrication. They are industrially sturdy and suitable for heavy continuous duty.

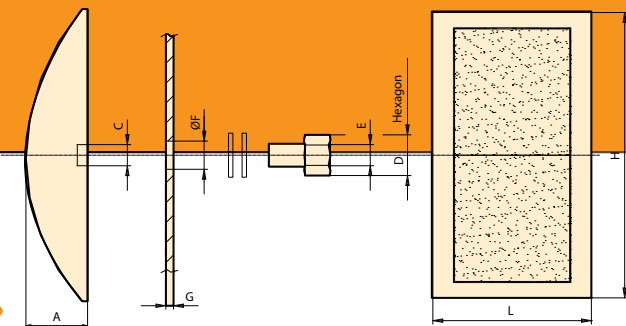
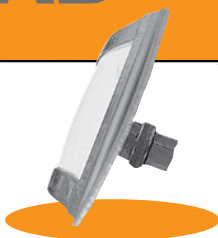


For special applications, the gauge can be supplied complete with an extension. The length must be specified in the order.

Aeration pad

SAA - SAB

Aeration pad suitable for tanks and silos used in different industries, in particular in heavy situations or with high temperature. Body in stainless steel AISI 304.



* Average consumption in Nm³/h while using 6 nos. aeration pads fed with SAK6 at 0,5 bar pressure.

** Weight for to a box with 6 pieces.

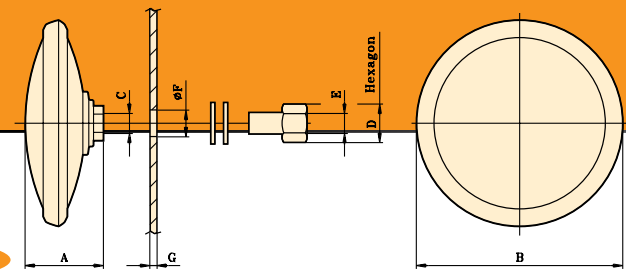
TYPE	A	B	B1	C	D	E	ØF	G mm	Nm ³ /h*	Kg*	Min °C	Max °C
SAA120C	35	162	90	1/4" GAS	20	1/4" GAS	14	0,5÷6	6	2,2	-10	120

Aeration disc

SAD - SAE

Aeration tridimensional disc suitable for tanks and silos used in different industries, in particular where a very good cleaning is necessary.

Product protected by Patent registered in Italy



* Average consumption in Nm³/h while using 6 nos. discs fed with SAK6 at 0,5 bar pressure.

** Weight for to a box with 6 pieces.

TYPE	A	B	C	D	E	ØF	G mm	Nm ³ /h*	Kg*	Min °C	Max °C
SAD180C	47	125	1/4" GAS	20	1/4" GAS	14	0,5÷6	9	1,5	-10	70

Aeration nozzle

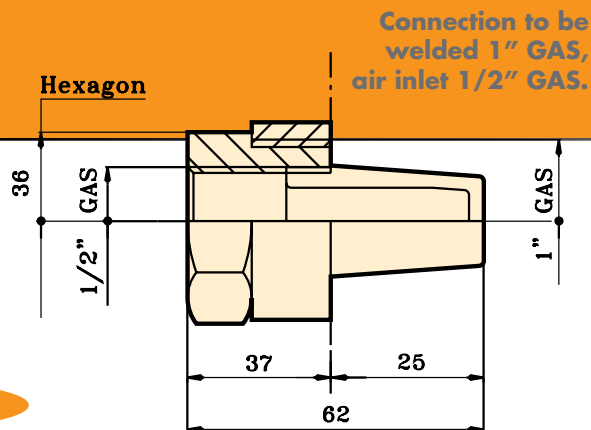
SUF

Aeration nozzles suitable for small tanks or pipes, easy to mount even on existing equipments.

TYPE	COSTRUCTION MATERIAL	Nm ³ /h*	Kg**	Min °C	Max °C
SUF100AC..	Carbon steel	6	3	-10	80
SUF100BC..	AISI 316	6	3	-10	80

* Average consumption in Nm³/h while using 10 nos. nozzles fed with SAK10B at 0,5 bar pressure.

** Weight for to a box with 10 pieces.



All dimensions in mm, unless stated otherwise. The Company MIX reserves the right to alter product specifications without prior notice. All the quoted sizes are approximate. The given figures are mean values with tolerances entailed by the customary production-related variations. In any particular case, and to have the correct values, our written confirmation is necessary.



Other Products made by Mix srl



Valves

Filtering



Conveying



Mixing

