

Amphenol®



Amphenol® Amphe-Lug Industrial Lugs

Amphenol Industrial Operations introduces a series of high amperage, high conductivity copper terminals for use in harsh environment applications. These terminals are available for metric or AWG wire in one or two hole designs. Electro-tin plating on the terminals is standard. An inspection hole is provided to ensure adequate cable insertion is achieved. A listing of recommended crimping instructions and tools is available upon request.

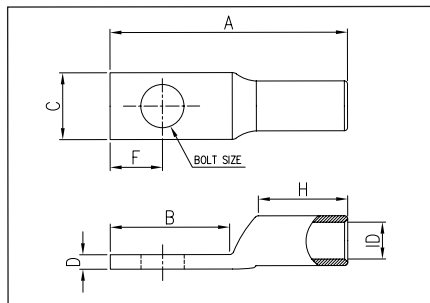
Features:

- Straight, 45°, and 90° barrels available
- Wire sizes: 8AWG ~ 4/0AWG
- Voltage range: 600V ~ 35KV
- UL and CSA certification
- Crimp termination with standard color-coded dies

TECHNICAL DATA

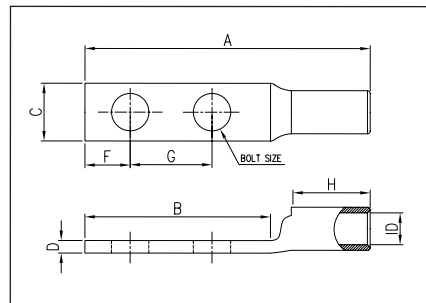
- Material: High conductivity, Wrought copper
- Finish: Electro Tin Plate
- Voltage: 600V to 35KV

Figure 1



One hole lug-standard barrel

Figure 2



Two hole lug-standard barrel

Amphenol Catalog P/N	Fig. No.	Wire Size		Bolt Size	A	B	C	D	F	G	ID	Die Code	Die Color	Certification	
		Code	Flex											CSA (Y/N)	UL (Y/N)
AG0814-252	1	#8 AWG	37/24 = 14.9 kcmil	1/4	1.21	0.62	0.48	0.07	0.25	-	0.18	21	Red	N	Y
AG0614	1	#6 AWG	6 Weld	1/4	1.23	0.53	0.44	0.07	0.22	-	0.22	24	Blue	N	Y
AG0412-261	1	#4 AWG	40-50 Navy	1/2	1.83	1.08	0.71	0.07	0.53	-	0.28	29	Gray	Y	Y
AG0212-252	1	#2 AWG	60 Navy #4 Weld	1/2	1.89	1.07	0.75	0.08	0.47	-	0.31	33	Brown	Y	Y
AU0112-260	1	#1 AWG	125/24 = 50.5 kcmil	1/2	2.71	1.08	0.83	0.12	0.32	-	0.36	37	Green	Y	Y
AG1038-252	1	#1/0 AWG	150/24 = 60.5 kcmil	3/8	1.74	0.83	0.76	0.12	0.36	-	0.39	42	Pink	Y	Y
AG2012-252	1	#2/0 AWG	225/24 = 90.8 kcmil	1/2	2.11	1.09	0.85	0.13	0.75	-	0.45	45	Black	Y	Y
AG3056	1	3/0 AWG	275/24 = 111 kcmil	5/16	1.90	0.88	0.92	0.13	0.38	-	0.51	50	Orange	Y	Y
AG4038-252	1	4/0 AWG	325/24 = 131 kcmil	3/8	2.09	0.86	1.06	0.14	0.35	-	0.57	54	Purple	Y	Y
AM081401-250	2	#8 AWG	37/24 = 14.9 kcmil	1/4	2.49	1.62	0.48	0.07	0.25	1.00	0.18	21	Red	N	Y
AH061243-261	2	#6 AWG	61/24 = 24.6 kcmil	1/2	3.53	2.83	0.83	0.12	0.53	1.75	0.22	24	Blue	N	Y
AH041243-260	2	#4 AWG	91/24 = 36.7 kcmil	1/2	3.89	2.83	0.83	0.12	0.25	1.75	0.26	29	Gray	Y	Y
AH021458	2	#2 AWG	125/24 = 50.5 kcmil	1/4	2.13	1.28	0.59	0.11	0.25	0.63	0.30	33	Brown	Y	Y
AH013801	2	#1 AWG	150/24 = 60.5 kcmil	3/8	2.66	1.81	0.68	0.11	0.38	1.00	0.36	37	Green	Y	Y
AH101458-251	2	#1/0 AWG	275/24	1/4	2.26	1.29	0.85	0.13	0.39	0.63	0.45	42	Pink	Y	Y
AH201458-250	2	#2/0 AWG	325/24 = 131 kcmil	1/4	2.69	1.41	0.85	0.13	0.35	0.63	0.45	45	Black	Y	Y
AM301434	2	3/0 AWG	450/24 = 182 kcmil	1/4	2.92	1.45	0.92	0.13	0.25	0.75	0.51	50	Orange	Y	Y
AH403801	2	4/0 AWG	450/24 = 182 kcmil	3/8	3.20	1.93	1.03	0.14	0.38	1.00	0.56	54	Purple	Y	Y

Notes: More sizes are available for each lug style
45° and 90° standard barrels are available for both one hole and two hole versions.

For additional information on the Amphenol connectors consult Amphenol Industrial Operations.

Notice: Specifications are subject to change without notice. Contact your nearest Amphenol Corporation Sales Office for the latest specifications. All statements, information and data given herein are believed to be accurate and reliable but are presented without guarantee, warranty, or responsibility of any kind, expressed or implied. Statements of suggestions concerning possible use of our products are made without representation or warranty that any such use is free of patent infringement and are not recommendations to infringe any patent. The user should assume that all safety measures are indicated or that other measures may not be required. Specifications are typical and may not apply to all connectors. AMPHENOL is a registered trademark of Amphenol Corporation.