

# Solenoid operated valves pilot operated poppet type

## 2-way normally closed

### Special cavity, 021-E

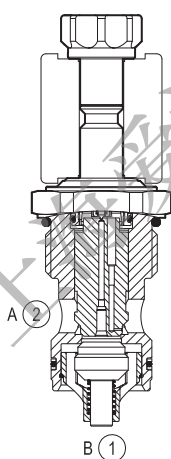
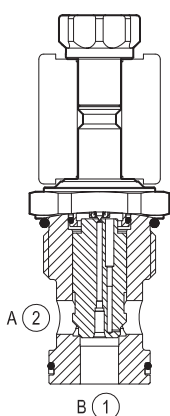
VEI-8A-12-NC

OD.15 - X - 21 - Y - Z

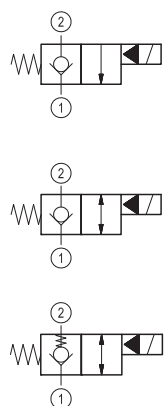
**RE 18323-04**

Edition: 01.2016

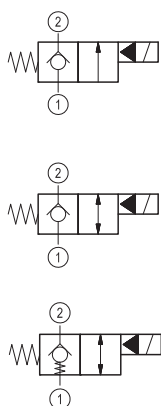
Replaces: 03.2015



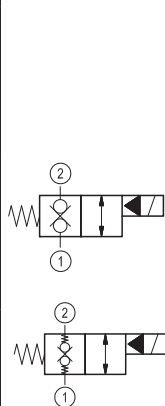
## ▼ Version 1



## ▼ Version 2



## ▼ Version 3

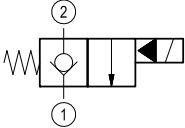
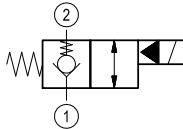
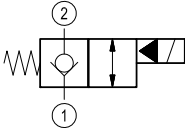
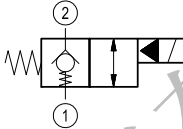
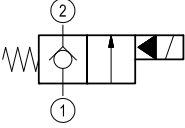
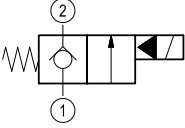
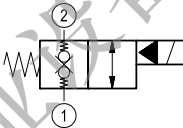
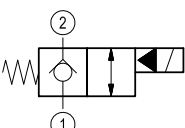
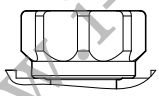
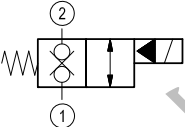
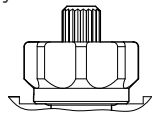
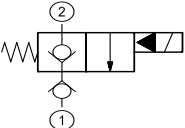


## ▼ Version 4

**Technical data**

General	
Weight	0.34 kg (0.75 lbs)
Installation orientation	Optional
Ambient temperature range	-30 to 60 °C (-22 to 140 °F)
Hydraulic	
Max. operating pressure	350 bar (5000 psi)
Max. proof pressure	420 bar (6000 psi)
Flow range	5 - 150 l/min (1 - 40 gpm)
Fatigue cycle life	1 million cycles at 350 bar
Max. internal leakage	20 drops/min.
Fluid temperature range	-20 to 80 °C (-4 to 176 °F)
Fluids: Mineral-based or synthetics with lubricating properties at viscosities of 20 to 380 mm <sup>2</sup> /s (cSt)	
Installation torque	130 - 150 Nm (96 - 111 ft-lbs)
Recommended degree of fluid contamination	Nominal value max. 10 µm (NAS 8) ISO 4406 19/17/14
MTTFd	150 years see RE 18350-51 except for codes marked with *
Special cavity	021-E see 18325-75
Lines bodies and standard assemblies	Please refer to section "Hydraulic integrated circuit" or consult factory
Seal kit – version 1	code material no. RG21E201052010 R934003566
Seal kit – version 2-3	code material no. RG21E201053010 R934003567
Seal kit coil	code material no. RG12A1PNBR7010 R934003958
Other technical data	See data sheet 18350-50
Electrical	
Type of voltage	DC voltage
Coil type	S8-356 see 18325-90
Supply voltage	See data sheet 18325-90
Nominal voltage	± 10%
Power consumption	20 W
Duty cycle coil	See characteristic curves %
Type of protection	See data sheet 18325-90
Note: Coils must be ordered separately	

# Ordering code

OD.15	X	21	Y	Z
Solenoid operated valves pilot operated poppet type 2-way normally closed				
monodirectional type				<b>S0</b> = Tube not welded
	<b>01</b>			<b>S8</b> = Tube not welded with extra spring
bidirectional type				 for X= 05
	<b>05</b>			 for X= 03
monodirectional type				
	<b>09</b>			 for X= 31
bidirectional type				standard type
	<b>03</b>			<b>3A</b> 
bidirectional type				knob style manual override
	<b>31</b>			<b>3D</b> 
monodirectional type				
	<b>11</b>			
		21 Special cavity: 021-E		

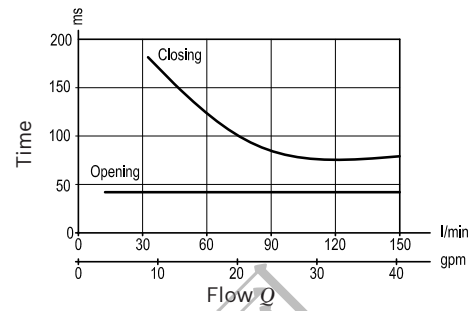
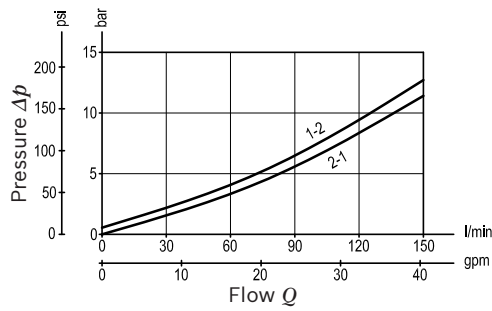
Type	Material number
OD1501213AS000	R901144300
OD1501213AS800	R934000707
OD1501213DS000	R901085462
OD1503213AS000	R901113666
OD1503213AS800	R934003065
OD1503213DS000	R934000792
OD1503213DS800	R934003066
OD1505213AS000	R901104395
OD1505213AS800	R901119221

Type	Material number
OD1505213DS000	R901119267
OD1509213AS000	R901132881
OD1511213AS000 *	R901138183
OD1511213AS800 *	R934001086
OD1531213AS000	R901104412
OD1531213AS800	R901119002
OD1531213DS000	R901132876
OD1531213DS800	R901125793

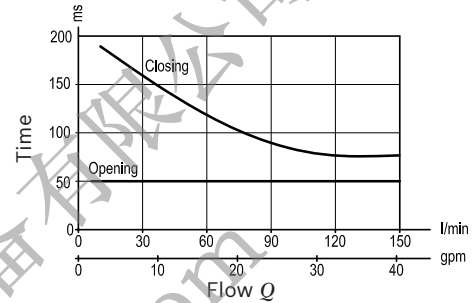
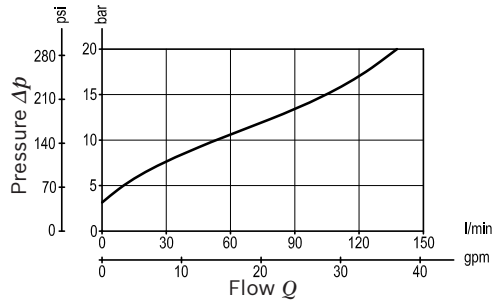
## Characteristic curves

## Version 1 – Version 2

Standard

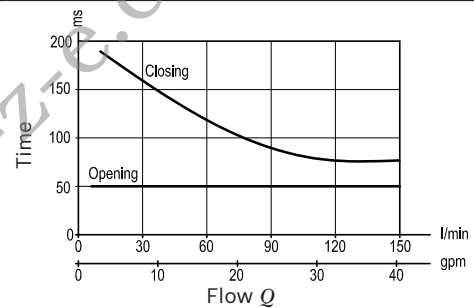
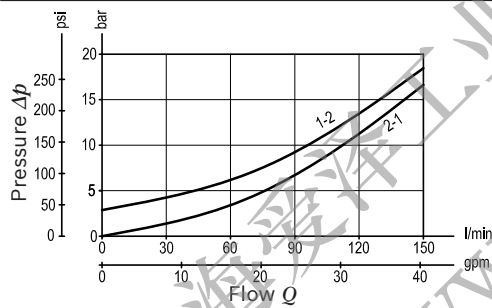


Extra spring

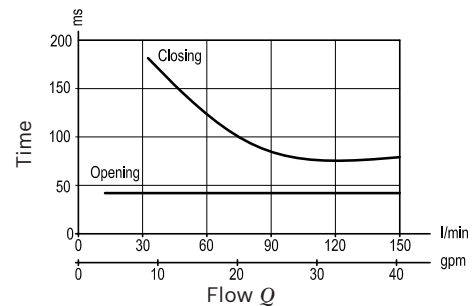
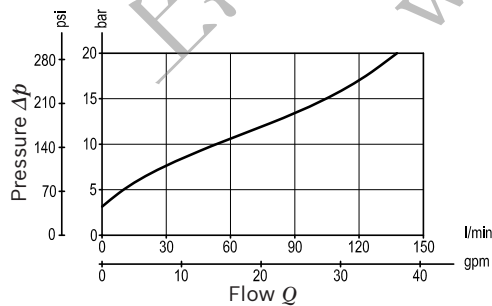


## Version 3

Standard

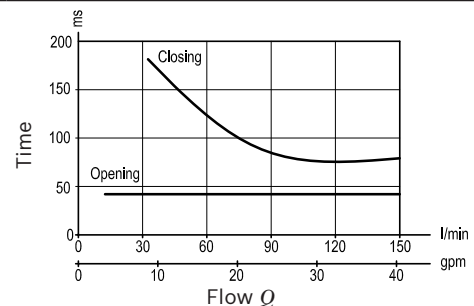
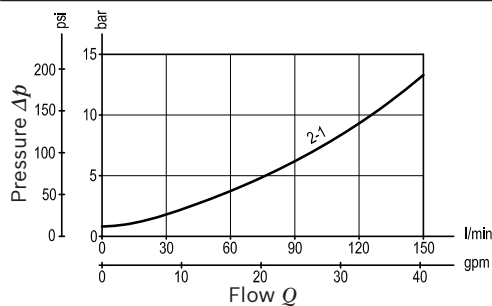


Extra spring



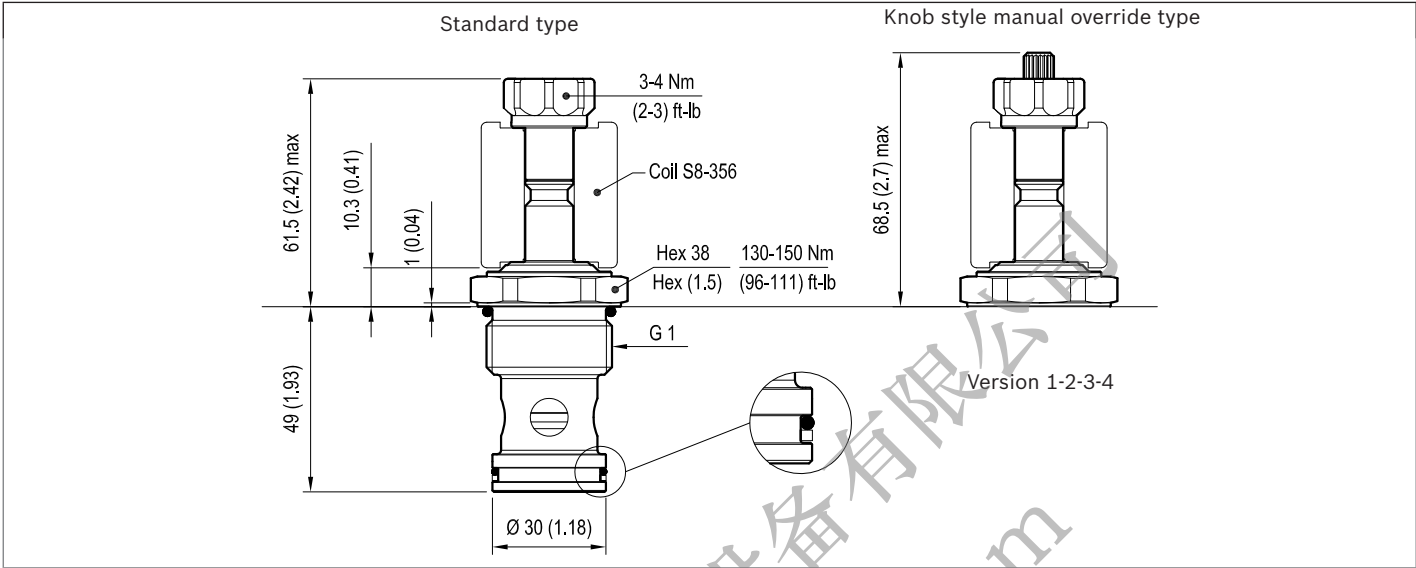
## Version 4

Standard



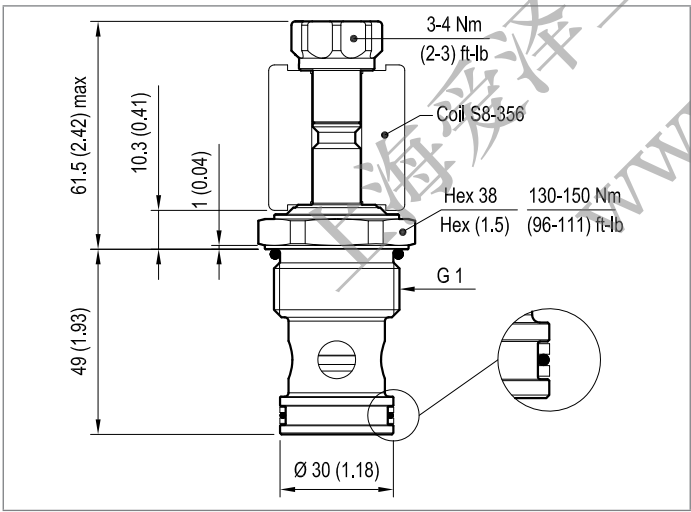
**Dimensions**

▼ **Version 01: Solenoid operated valves, poppet 2-way normally closed**



▼ **Version 02: Solenoid operated valves, poppet 2-way normally closed**

▼ **Version 03: Solenoid operated valves, poppet 2-way double lock normally closed**



▼ **Version 04: Solenoid operated valves, poppet 2-way normally closed**

