



SPECIAL

2- and 3-POINT Actuators

5.10

Application

The JOVENTA SPECIAL electric damper-actuator series is designed to operate air dampers in ventilation and air conditioning systems.

The compact design and universal adapter fitted with limitation of rotation angle make this JOVENTA actuator highly versatile.

Key features

- 2- or 3-point control
- Load-independent running time
- Up to 5 actuators in parallel operation possible
- Plug-in terminal block connection
- Simple direct-mount with universal adapter on Ø 10 mm to 20 mm shaft or square shaft from 10 mm to 16 mm.
48 mm minimum damper shaft length
- Selectable direction of rotation
- Limitation of rotation angle
- Manual release button
- 2 adjustable auxiliary switches
See back page for settings
- Automatic shut-off at end position (overload switch)
- Energy saving at end positions
- Actuators available with 1 m halogen-free cable
- Customized versions available
- Devices meet CE requirements

Accessories

- ZK damper linkage selection
 - ZKG ball joints
- (see product sheet 6.10)

Nomenclature/Specification/Technical data

SA1.10	SA1.12	AC/DC24V	
SA1.10S	SA1.12S	AC/DC24V	with 2 auxiliary switches
SA1.10P1	SA1.12P1	AC/DC24V	with 1000 Ω feedback potentiometer
SA1.10P2	SA1.12P2	AC/DC24V	with 140 Ω feedback potentiometer

SA2.10	SA2.12	AC230V	
SA2.10S	SA2.12S	AC230V	with 2 auxiliary switches

..... K K	with 1 m halogen-free cable
---------	---------	-----------------------------

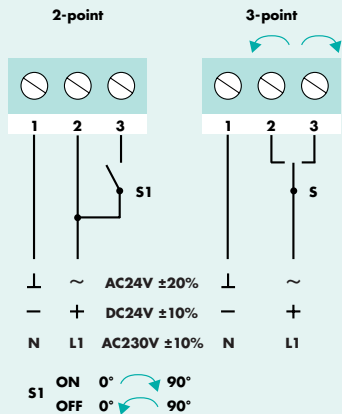
Actuator	SA1.10(S)(P..)	SA1.12(S)(P..)	SA2.10(S)	SA2.12(S)
Torque	16 Nm	8 Nm	16 Nm	8 Nm
Damper area*	3.0 m²	1.5 m²	3.0 m²	1.5 m²
Running time	16 s	8 s	16 s	8 s
Supply voltage	AC/DC24V	AC/DC24V	AC230V	AC230V
Frequency	50-60 Hz	50-60 Hz	50-60 Hz	50-60 Hz
Power consumption				
- Running	7.0 W	7.0 W	12.0 W	12.0 W
- At end position	0.7 W	0.7 W	3.7 W	3.7 W
Dimensioning	13.0VA / 3.4A @ 2 ms		13.0VA / 0.35A @ 2 ms	
Weight	1.1 kg		1.2 kg	
Control signal	2- or 3-point		2- or 3-point	
Position signal	Potentiometer		None	
Angle of rotation/working range	90° (93° mech.)		90° (93° mech.)	
Angle of rotation/limitation	5°...85° in 5° < steps		5°...85° in 5° < steps	
Service lifetime	60,000 rotations		60,000 rotations	
Auxiliary switches	3(1.5A, AC230V		3(1.5A, AC230V	
Setting range / adjustable	5°...85° < infinity		5°...85° < infinity	
Potentiometer load	0.5 W		None	
Tolerance	±10%		None	
Noise level	45 dB (A)			
Protection class	II			
Degree of protection	IP 54 (cable downwards)			
Cable aperture connection	M16 x 1.5			
Mode of action	Type 1			
Ambient conditions				
- Operating temperature	-20...+50°C / IEC 721-3-3			
- Storage temperature	-30...+60°C / IEC 721-3-2			
- Humidity	5...95% r.F.			
Service	Maintenance-free			
Standards	Mechanics		EN 60 529 / EN 60 730-2-14	
	Electronics		EN 60 730-2-14	
	EMC Emissions		EN 50 081-1:92 / IEC 61 000-6-3:96	
	EMC Immunity		EN 50 082-2:95 / IEC 61 000-6-2:99	

SPECIAL

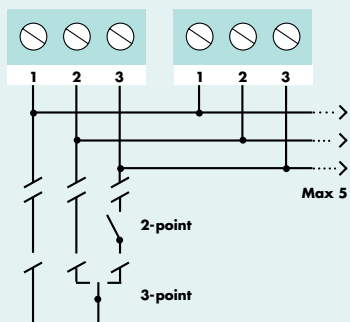
2- and 3-POINT Actuators

5.10

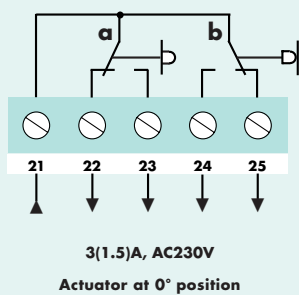
Wiring diagram



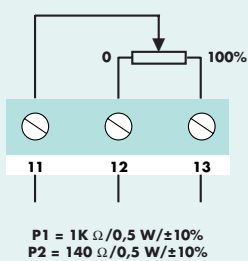
Parallel connections



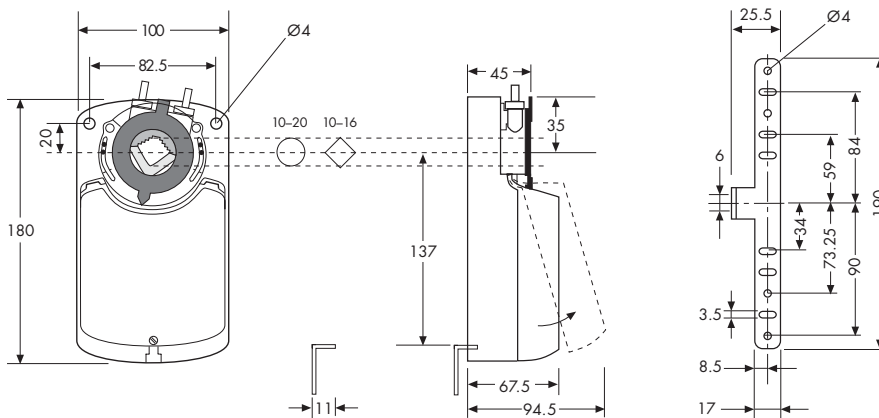
Auxiliary switches (S)



Potentiometer (P)



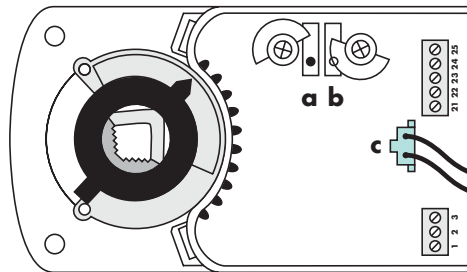
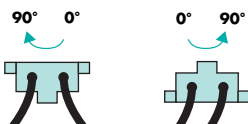
Dimensions in mm



Changing the direction of rotation

The direction of rotation can be changed by reversing plug **c**

Factory setting



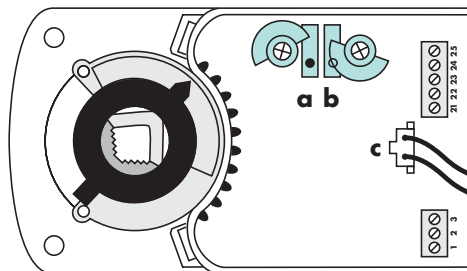
Setting the auxiliary switches

Factory setting

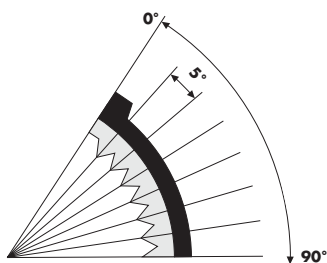
Switch **a** at 10°

Switch **b** at 80°

The switching position can be manually changed to any required position by turning the ratchet.



Limitation of rotation angle



Adapter release

